



Clark Atlanta University, Atlanta, Ga

FACTBOOK

2014 - 2018





TABLE OF CONTENTS

GENERAL INFORMATION

University Profile	2
University History	3
List Of Academic Programs By School.....	4

STUDENT INFORMATION

Undergraduate Enrollment by School, Program, Class and Gender.....	6
Graduate Enrollment by School, Program, Degree Level and Gender.....	7
Enrollment by Term, Level and Full-Time Equivalent	8
Total Student Enrollment by State, U.S. Territories International and Level	9
Students Participating In Study Abroad Program by Country	10
Students Participating In Study Abroad Program by Major	11
On-Campus Student Occupancy Rates by Residence.....	12
Student Right To Know On-Campus Crime Statistics	13
6-Yr Graduation Rates Of Students Receiving Athletically Related Aid	13

UNDERGRADUATE STUDENT ENROLLMENT

Undergraduate New Student Applicant Yield Rate.....	15
First-Time Entering Freshman Profile	16
First-Time Freshman Enrollment by State, U.S. Territories, International and Gender	17
Undergraduate Enrollment by School, Class and Gender.....	18
Undergraduate Enrollment by School and Gender.....	19
Undergraduate Enrollment by School and Program.....	20
Undergraduate Enrollment by Ethnicity and Gender.....	21
Undergraduate Student Religious Preference by Gender.....	22
Undergraduate Enrollment by Residency and Gender	23
Undergraduate Enrollment by State, U.S. Territories and International.....	24
Undergraduate International Student Enrollment by Country and Gender.....	25

GRADUATE STUDENT ENROLLMENT

Graduate New Student Applicant Yield Rate	27
Graduate Enrollment by School, Degree Type and Gender.....	28
Graduate Enrollment by School and Gender	29
Graduate Enrollment by School, Program, Degree Level and Gender.....	30
Graduate Enrollment by School and Program	31
Graduate Enrollment by Ethnicity and Gender	32
Graduate Student Religious Preference by Gender	33
Graduate Enrollment by Residency and Gender.....	34
Graduate Enrollment by State, U.S. Territories and International.....	35
Graduate International Student Enrollment by Country and Gender	36



STUDENT RETENTION, GRADUATION AND PLACEMENT

Undergraduate Student Retention and Graduation Report.....	38
Undergraduate First Generation Student Retention and Graduation Rate.....	39
Graduate Master’s Time to Degree.....	40
Graduate Doctorate Time to Degree.....	41
Undergraduate Degree Recipients by School, Cip Code, Major and Gender.....	42
Accelerated Bachelor/Master Dual Degree Recipients by School, Cip Code, Major and Gender	43
Master’s Degree Recipients by School, Cip Code, Major and Gender	44
Doctoral Degree Recipients by School, Cip Code, Major and Gender	45
Undergraduate and Graduate Career Placement.....	46

FACULTY / STAFF

Full-Time Instructional Faculty by School, Gender, Ethnicity, Rank	48
Part-Time Instructional Faculty by School, Gender	49
Full-Time Instructional Faculty Profile.....	50
Total Number of Faculty by School, Division, Department.....	51
Instructional Faculty by Employment Status, Gender, and Race/Ethnicity	56
Total Employees by Employment Status and FTE	57
Faculty-Student and Staff-Student Ratio by FTE	58

FINANCIALS

Awarded Student Aid by Funding Source	60
Revenues FY 2017-18.....	61
Expenditures FY 2017-18	61
Undergraduate Student Costs Per Academic Year	62
Undergraduate On-Campus Student Cost of Attendance Per Academic Year	62

LIBRARY LEARNING RESOURCES

Library Collection of Resources	64
---------------------------------------	----

ADMINISTRATION

2018-2019 Organizational Structure of Clark Atlanta University	66
Board Of Trustees.....	67
Executive Cabinet	68
Degree Granting Department Chairs.....	69



MISSION

Building on its social justice history and heritage, Clark Atlanta University is a culturally diverse, research-intensive, liberal arts institution that prepares and transforms the lives of students. CAU is located in the heart of Atlanta which is the epicenter of the Civil Rights Movement and modern center of emerging technologies and innovation. Ignited by its history, CAU is committed to delivering education that is accessible, relevant, and transformative.

Approved by the Board of Trustees, May 17, 2019

VISION

Clark Atlanta University will be recognized internationally as a leading research institution of higher education and learning. The University will impact society through global innovation, transformative educational experiences, and high-value engagement.

Approved by the Board of Trustees, May 17, 2019

CORE VALUES

Our University's core values are like a compass, a tool that guides the campus community in navigating uncertainty while keeping the big picture in mind. These values serve as the foundational steps the University will take towards achieving its strategic vision.

"CAU P.R.I.D.E.S. ITSELF ON BEING ..."

People-Centric

Treat students, colleagues, and broad beneficiaries of our services with professionalism, respect, responsiveness, focused on effective solutions.

Research-Focused, Innovative and Creative

Ignite new possibilities in research and advance knowledge of humankind.

Inclusive and Accountable

Promote collaboration and unity among students, faculty, and staff to provide a significant contribution are added to the University's body of knowledge.

Diverse and Global

Embrace and support all forms of human differences, ideas and perspectives, and our natural environment.

Excellent

Commit to high-quality in all we do to achieve our noble cause.

Student-Centered

Commit to leveraging our students' experience through teaching, learning, and service.

Approved by the Board of Trustees, May 17, 2019



Institutional Accreditation

Clark Atlanta University is accredited by the Southern Association of Colleges and Schools Commission on Colleges to award the baccalaureate, masters, specialist and doctorate degrees. Contact the Commission on Colleges at 1866 Southern Lane, Decatur, Georgia, 30033-4097 or call 404-679-4500 for questions about the accreditation of Clark Atlanta University.

Academic Program Accreditations

- AACSB International – The Association to Advance Collegiate Schools of Business
- Council on Social Work Education, B.S.W. and M.S.W. degree programs
- Council for Accreditation of Counseling and Related Educational Programs
- Network of Schools of Public Policy, Affairs, and Administration
- National Council for Accreditation of Teacher Education (Subsumed under Council for the Accreditation of Educator Preparation - CAEP)
- The Georgia Professional Standards Commission

Georgia State Authorization - Nonpublic Postsecondary Education Commission

Clark Atlanta University is authorized by GNPEC to operate in the state of Georgia and is exempt from the “Nonpublic Postsecondary Educational Institutions Act of 1990” (O.C.G.A. 20-2-250.1). For further assistance, contact NPEC, 2082 East Exchange Place, Suite 220, Tucker, Georgia 30084-5305 or call 770-414-3300.

Religious Affiliation

Clark Atlanta University is approved for listing as a United Methodist Church-related University by the University Senate General Board of Higher Education and Ministry of the United Methodist Church.

NCAA Athletic Affiliation

Clark Atlanta University is affiliated with the National Collegiate Athletic Association (NCAA) Division II and has been a member of the Southern Intercollegiate Athletic Conference (SIAC) since 1913, when the Conference was established.

Equal Employment Opportunity and Affirmative Action Statement

Clark Atlanta University is an equal opportunity/affirmative action employer. The University provides equal employment opportunities to all faculty, staff, students and applicants without regard to race, color, religion, sex, age, national origin, marital status, physical handicap, military or status as a Vietnam veteran in compliance with applicable federal and state laws that pertain to nondiscrimination. Such action shall include, but is not limited to, employment, promotion, demotion or transfer; recruitment or recruitment advertising; lay-off or separation; rates of pay or other forms of compensation and selection for training programs.

Clark Atlanta University is committed to providing equal educational opportunity for all qualified student applicants and enrolled students without regard to race, sex, religion, color, national origin, age, ancestry, physical handicap, military or marital status. This commitment to equal opportunity includes recruitment, admission, access to and usage of facilities, counseling and testing, financial assistance, placement and curricular programs and activities.



THE 2014-2018 FACTBOOK

Ninth Edition

Acknowledging Facts and Figures

The Office of Planning, Assessment and Institutional Research (OPAR) is pleased to present the Clark Atlanta University 2014-2018 Fact Book. This publication contains both current and historical abstract of statistical information such as student, faculty and staff trends, academics, finances, library and learning resources, and physical plant from a variety of institutional databases. The data presented is frequently requested and is the definitive source of essential information that chronicles the University's progress over the past five years.

The compiled information is a result of data collected, recorded or retrieved from various sources by the fall and spring census dates and distributed to numerous campus offices and reported to federal, state and regional agencies.

The Trend Book is intended to serve as a resource for CAU constituents and decision makers engaged in planning, budgeting, evaluating and improving programs and services as well as reporting institutional effectiveness and stakeholder accountability.

Reader suggestions for improving subsequent editions are welcome.

Dr. Lauren Lopez
Assistant Vice President
404-880-6294
llopez@cau.edu

**Office of Planning, Assessment and Institutional Research
Kresge Hall, Rm. 300
223 James P. Brawley Dr., SW
Atlanta, GA 30314
www.cau.edu**

In order to ensure accurate and valid data collected through professional methods, the OPAR adheres to the Code of Ethics and Professional Practice (www.airweb.org) adopted by the Association of Institutional Research (AIR) and follows ethical principles and standards that guide the work of institutional research practitioners.



GENERAL INFORMATION



UNIVERSITY PROFILE

Fall 2018

Clark Atlanta University (CAU), formed in 1988 as a result of the consolidation of two independent historically black institutions — Atlanta University (1865) and Clark College (1869), is a United Methodist Church-related, private, coeducational, residential, and comprehensive urban research university. The University, one of the largest of the 37-member UNCF colleges, offers undergraduate, graduate and professional, and non-degree certificate programs.

CAU is classified by Carnegie as R2: Doctoral Universities – Higher Research Activity and the only private, independent graduate research institution in the HBCU community, and the only HBCU member of the Georgia Research Alliance. Clark Atlanta University is accredited by the Southern Association of Colleges and Schools Commission on Colleges to award the baccalaureate, masters, specialist and doctorate degrees. Contact the Commission on Colleges at 1866 Southern Lane, Decatur, Georgia, 30033-4097 or call 404-679-4500 for questions about the accreditation of Clark Atlanta University.

CAU is also accredited by the Association to Advance Collegiate Schools of Business (AACSB International); the National Council for Accreditation of Teacher Education (NCATE) now under Council for the Accreditation of Educator Preparation (CAEP) and the Georgia Professional Standards Commission (GPSC); the Council for Accreditation of Counseling and Related Educational Programs (CACREP); the Council on Social Work Education (CSWE); the Network of Schools of Public Policy, Affairs, and Administration (NASPAA); and the National Collegiate Athletic Association, Division II. CAU is authorized by Georgia State Nonpublic Postsecondary Education Commission (GNPEC) to operate in the state of Georgia. The University is approved for listing as United Methodist Church-affiliated University by the University Senate General Board of Higher Education and Ministry of the United Methodist Church.

The main campus, with 39 academic, administrative, and student support buildings spanning over 126 acres of land, is located about 1.5 miles southwest from the heart of metro downtown Atlanta, Georgia. The University is accessible from all major arteries – I-20, I-75, I-85, and I-285 of the State and Hartsfield Jackson International Airport.

The University offers 39 major areas of study through four schools – Arts and Sciences; Business Administration; Education; and Social Work and awards Bachelor's, Master's, Specialist, and Doctoral degrees. Highest enrolled undergraduate fields: Biology, Business Administration, Criminal Justice, Mass Media Arts, Psychology.

Total full-time teaching faculty number = 182, 83% of whom hold terminal degrees; 58% have tenure status. Faculty-student ratio is 1:19.

During the 2017-18 academic year, the University awarded a total of 674 degrees (411 Bachelor's; 233 Master's; 30 Doctorates). Retention of first-year students returning for a second year is 70% and six-year cohort graduation rate is 44%. Our graduates are deeply employed in the sectors such as business, film and media, medical and healthcare, and government.

Fall 2018 Headcount Enrollment = 3911 (3325 Undergraduate; 586 Graduate). Total Full-time Equivalent (FTE) = 3761.

Georgia students constitute 38% of total enrollment, 56% of students come from out-of-state and 6% represent the Caribbean Islands and more than 15 foreign countries. Female students constitute 74% of the total enrollment while male students comprise of 26%.

Currently there are seven University operated and two affiliated residential facilities to house 2400 students. There are more than 60 chartered student organizations including social fraternities and sororities.

As a NCAA Division II Southern Intercollegiate Athletic Conference member, the University provides athletic opportunities in varsity sports: Men – baseball, basketball, football, track/field & cross-country; Women – basketball, softball, tennis, track/field & cross-country, volleyball.

2018-19 Annual tuition/fees = \$23,436; Room/Board = \$9,524; Total Cost of Attendance is \$38,284.

The market value of the University's endowment asset is \$ 71,438,808 (as of June 30, 2018).

Economic Impact: \$517M combined gross sales and labor producing 3142 full and part-time jobs.



UNIVERSITY HISTORY

Atlanta University, founded in 1865, by the American Missionary Association, with later assistance from the Freedman's Bureau, was, before consolidation, the nation's oldest graduate institution serving a predominantly African-American student body. By the late 1870s, Atlanta University had begun granting bachelor's degrees and supplying black teachers and librarians to the public schools of the South. In 1929-30, it began offering graduate education exclusively in various liberal arts areas, and in the social and natural sciences. It gradually added professional programs in social work, library science, and business administration. At this same time, Atlanta University affiliated with Morehouse and Spelman Colleges in a university plan known as the Atlanta University System. The campus was moved to its present site, and the modern organization of the Atlanta University Center emerged, with Clark College, Morris Brown College, and the Interdenominational Theological Center joining the affiliation later. The story of the Atlanta University over the next twenty years from 1930 includes many significant developments. The Schools of Library Science, Education, and Business Administration were established in 1941, 1944, and 1946 respectively. The Atlanta School of Social Work, long associated with the University, gave up its charter in 1947 to become an integral part of the University.

Clark College was founded in 1869 as Clark University by the Freedmen's Aid Society of the Methodist Episcopal Church, which later became the United Methodist Church. The University was named for Bishop Davis W. Clark, who was the first President of the Freedmen's Aid Society and became Bishop in 1864. A sparsely furnished room in Clark Chapel, a Methodist Episcopal Church in Atlanta's Summer Hill section, housed the first Clark College Class. In 1871, the school relocated to a new site on the newly purchased Whitehall and McDaniel Street property. In 1877, the School was chartered as Clark University.

An early benefactor, Bishop Gilbert Haven, visualized Clark as the "University" of all the Methodist schools founded for the education of freedmen. Strategically located in the gateway to the South, Clark was founded to "give tone" to all the other educational institutions of the Methodist Episcopal Church providing education for Negro youth. After the school had changed locations several times, Bishop Haven, who succeeded Bishop Clark, was instrumental in acquiring 450 acres in South Atlanta, where in 1880 (the institution relocated in 1883) the school conferred its first degree. Also in 1883, Clark established a department, named for Dr. Elijah H. Gammon, known as Gammon School of Theology, which in 1888 became an independent theological seminary and is now part of the Interdenominational Theological Center.

For purposes of economy and efficiency, during the 1930s, it was decided that Clark would join the Atlanta University Complex. In the winter of 1939, work began across town on an entirely new physical plant adjoining Atlanta University, Morehouse College, and Spelman College. In 1957, the controlling Boards of the six institutions (Atlanta University; Clark, Morehouse, Morris Brown and Spelman Colleges; and Gammon Theological Seminary) ratified new Articles of Affiliation creating the Atlanta University Center, the most prevalent consortium of African-American private institutions of higher education in the nation.

During the 1980s some of the advantages of proximity, which had seemed promising earlier, again became evident. Clark College and Atlanta University through consolidation preserved the best of the past and present and "Charted a Bold New Future." Clark Atlanta University was created on July 1, 1988. The new and historic University inherits the rich traditions of two independent institutions, connected over the years by a common heritage and commitment; by personal, corporate and consortia relationships; and by location.

The first President of Clark Atlanta University was Thomas W. Cole, Jr., Ph.D., who served concurrently as the President of both Atlanta University and Clark College prior to consolidation. Dr. Walter D. Broadnax, Ph.D., became the second President on August 1, 2002, and served until his retirement on July 31, 2008. The third President was Dr. Carlton E. Brown, Ph.D., who assumed leadership on August 1, 2008 until his retirement from office on June 30, 2015. Ronald A. Johnson, Ph.D., was elected the University's fourth president on March 31, 2015, took the helm of the institution on July 1, 2016, and was inaugurated on October 8, 2016.



LIST OF ACADEMIC PROGRAMS BY SCHOOL

2018-2019

CIP	MAJORS	DEGREES					
		UG	GM	Specialist	GD	Certificate	Accelerated/ Dual
Arts & Sciences							
50299	Africana Women's Studies		M.A.				
50201	African American Studies		M.A.				
500701	Art	B.A.					
260101	Biology	B.S.	M.S.		Ph.D.		B.S./M.S. (ADP)
400501	Chemistry	B.S.	M.S.		Ph.D.		B.S./M.S. (ADP)
110101	Computer and Information Systems*	B.S.					
110701	Computer Science	B.S.	M.S.				B.S./M.S. (ADP)
110103	Cybersecurity	B.S.					
430104	Criminal Justice	B.A.	M.A.				
230101	English	B.A.	M.A.				
500407	Fashion Design and Merchandising	B.A.					
160901	French	B.A.	M.A.				
540101	History	B.A.	M.A.				
240103	Humanities Interdisciplinary Program				Ph.D.		
400599	Industrial Chemistry		M.S.				
90799	Mass Media Arts	B.A.					
270101	Mathematics	B.S.	M.S.				B.S./M.S. (ADP)
500901	Music	B.A.					
380101	Philosophy	B.A.					
400801	Physics	B.S.	M.S.				B.S./M.S. (ADP)
451001	Political Science	B.A.	M.A.		Ph.D.		
420101	Psychology	B.A., B.S.					
440401	Public Administration		M.P.A.				
380201	Religion	B.A.					
451101	Sociology	B.A.	M.A.				
160905	Spanish	B.A.	M.A.				
231304	Speech Communication	B.A.					
500505	Theatre Arts	B.A.					
Business Administration							
520301	Accounting	B.A.	M.A.				B.S./M.A. (ADP)
520201	Business Administration	B.A.	M.B.A.				
520601	Economics	B.A.	M.A.				
Education							
139999	Clinical Mental Health Counseling		M.A.				
131210	Early Childhood Education	B.A.				Post-Bach Certificate	
130401	Educational Leadership – School Administration (P-12)/ Higher Education		M.A.	Ed.S.	Ed.D.		
130101	Educational Studies	B.A.					
131101	School Counseling		M.A.				
131205	Secondary Education (Science or Math)		M.A.T.				
131001	Special Ed - Gen Curriculum		M.A.				
Social Work							
440701	Social Work	B.S.W.	M.S.W.		Ph.D.		
TOTAL		29	25	1	6	1	6

SOURCE: Office of University Registrar



STUDENT INFORMATION



UNDERGRADUATE ENROLLMENT BY SCHOOL, PROGRAM, CLASS AND GENDER

FALL 2018

SCHOOL/PROGRAM	1st YR FRESHMAN		RETURNING FRESHMAN		SOPH		JUNIOR		SENIOR		TTL		GRAND TTL
	M	W	M	W	M	W	M	W	M	W	M	W	
ARTS & SCIENCES													
Art	3	6		6	7	9	5	10	1	3	16	34	50
Biology	11	137	6	42	7	91	13	54	3	38	40	362	402
Chemistry	5	18	3	4	2	10	1	4		3	11	39	50
Computer and Information Sys	10	9	5		15	5	9	3	10	2	49	19	68
Computer Science	9	4	4	1	18	11	10	3	8	1	49	20	69
Criminal Justice Admin	10	64	3	24	15	58	18	39	15	36	61	221	282
Cybersecurity			1			1	2				3	1	4
Dual Deg Engineer - Chemistry *		6		1		2	3			1	3	10	13
Dual Deg Engineer - Physics *	11	3	1	1	10	10	8	1		1	30	16	46
Dual Deg Engineer- Comp Sci *	3	5	1	1	1		1	2	1	1	7	9	16
Dual Deg Engineering - Math		2		1		1						4	4
Dual Degree-Biology	3	3		2		5	1	1	1		5	11	16
English	1	8		2	4	6		5	1	10	6	31	37
Fashion Design/Merchandising	5	23	3	12	6	33	2	36		23	16	127	143
French		1								1		2	2
History		5	2	1	1	4	1		2	2	6	12	18
Mass Media Arts	32	78	20	23	37	91	31	107	17	67	137	366	503
Mathematics		4				1	3	3	2	2	5	10	15
Music	5	10	1	2	1	10	3	8	1	1	11	31	42
Philosophy		1	1	1				2			1	4	5
Physics									1		1		1
Political Science	7	30	1	4	4	23	1	24		11	13	92	105
Psychology	7	83	2	7	6	60	5	62	5	43	25	255	280
Psychology - BS Degree		7				13		10		1	31	31	31
Religion			1			1	1	1			2	2	4
Sociology	2	11	3	3	3	10	2	7	1	2	11	33	44
Spanish		1		2				1				4	4
Speech Communication	2	8	2	3		6	4	4		1	8	22	30
Theatre Arts	5	8	2	3	7	16	3	16	2	7	19	50	69
TOTAL	131	535	62	146	144	477	126	403	72	257	535	1818	2353
BUSINESS ADMIN													
Accounting	6	11	3	5	5	17	6	20	6	10	26	63	89
Business Administration (Concentrations: Entrepreneurship Mgmt, Accounting, Finance, International Bus., Management, Marketing, Sports & Ent. Mgmt., Supply Chain Mgmt.)	50	120	21	39	49	104	59	90	49	70	228	423	651
Economics	3	5			1	2		4	2		6	11	17
TOTAL	59	136	24	44	55	123	65	114	57	80	260	497	757
EDUCATION													
Early Childhood Education	2	21		6	2	14	2	11		6	6	58	64
Educational Studies	1	3	1		2	5	3	8	2	14	9	30	39
TOTAL	3	24	1	6	4	19	5	19	2	20	15	88	103
SOCIAL WORK													
Social Work	3	19	1	6		17	2	19	6	18	12	79	91
TOTAL	3	19	1	6		17	2	19	6	18	12	79	91
UNDECIDED													
Major Not Declared	4	7									4	7	11
Non Degree Seeking			4	6							4	6	10
TOTAL	4	7	4	6							8	13	21
GRAND TOTAL	200	721	92	208	203	636	198	555	137	375	830	2495	3325

* 3 plus 2 Dual Degree Program with partner engineering institution

SOURCE: Banner by Ellucian/Student Database



GRADUATE ENROLLMENT BY SCHOOL, PROGRAM, DEGREE LEVEL AND GENDER

FALL 2018

SCHOOL/PROGRAM	DOCTORATE		MASTER'S		SPECIALIST		CERTIFICATE		TTL		GRAND TTL
	M	W	M	W	M	W	M	W	M	W	
ARTS & SCIENCES											
African American Studies			2	5					2	5	7
Africana Womens Studies				9					0	9	9
Biology	6	10	1	3					7	13	20
Chemistry	11	17	7	5					18	22	40
Computer and Information Sys*			4						4		4
Computer Science			7	2					7	2	9
Criminal Justice Admin			3	7					3	7	10
English			1	10					1	10	11
History			1	2					1	2	3
Humanities	13	36							13	36	49
Mathematics			2	4					2	4	6
Physics			4	2					4	2	6
Political Science	12	16	3	4					15	20	35
Public Administration			15	21					15	21	36
Romance Languages											
Sociology			5	5					5	5	10
Systems Science†											
TOTAL	42	79	55	79					97	158	255
BUSINESS ADMINISTRATION											
Accounting			3	2					3	2	5
Business Administration (Concentrations: Entrepreneurship Mgmt, Finance, Marketing, Sports & Ent. Mgmt., Supply Chain Mgmt.)			14	19					14	19	33
Economics											
TOTAL			17	21					17	21	38
EDUCATION											
Clinical Mental Hlth Counseling			4	20					4	20	24
Community Counseling			1	1					1	1	2
Early Childhood Education‡											
Educational Leadership	10	19	6	7					16	26	42
Higher Ed - Ed Leadership	13	17							13	17	30
Higher Ed Leadership Online	5	5							5	5	10
School Counseling			7	26					7	26	33
Secondary Education (Math or Science)			1	1					1	1	2
Special Ed - General Curriculum			4	2					4	2	6
TOTAL	28	41	23	57					51	98	149
SOCIAL WORK											
Social Work			16	100					16	100	116
SW Plan-Admin and Soc Sci	3	23							3	23	26
TOTAL	3	23	16	100					19	123	142
UNDECIDED											
Major Not Declared											
Non Degree Seeking			1	1					1	1	2
TOTAL		1	1						1	1	2
GRAND TOTAL	73	144	112	257					185	401	586

† Phased Out 2005-2008

‡ Post-Bacc Certification

SOURCE: Banner by Ellucian/Student Database



ENROLLMENT BY TERM, LEVEL AND FULL-TIME EQUIVALENT (FTE)*

AY 2014-15 – 2018-19

	AY 2014-15				AY 2015-16				AY 2016-17				AY 2017-18				AY 2018-19			
	FALL	SPG	SUM	TTL	FALL	SPG	SUM	TTL	FALL	SPG	SUM	TTL	FALL	SPG	SUM	TTL	FALL	SPG	SUM	TTL
Undergraduate	2567	2543	237	5347	2741	2727	229	5697	3093	3034	389	6516	3302	3203	496	7001	3325	3225	440	6990
Graduate	918	917	257	2092	920	897	200	2017	791	777	188	1756	690	644	137	1471	586	562	140	1288
TOTAL	3485	3460	494	7439	3661	3624	429	7714	3884	3811	577	8272	3992	3847	633	8472	3911	3787	580	8278
Undergraduate FTE*	2520	2490	152	5162	2702	2675	154	5531	3053	2991	251	6295	3261	3155	342	6758	3292	3178	316	6786
Graduate FTE*	793	771	205	1769	787	745	148	1680	666	630	148	1444	560	506	101	1167	469	430	106	1005
TOTAL FTE	3313	3261	357	6931	3489	3420	302	7211	3719	3621	399	7739	3821	3661	443	7925	3761	3608	422	7791

*Fall/Spring FTE = Number of FT UG Headcount plus TTL PT UG credit hours converted to FT (divide TTL PT hrs by 12)
 Number of FT Grad Headcount plus TTL PT Grad credit hours converted to FT (divide TTL PT hrs by 9)

*Summer FTE = Number of FT UG Headcount plus TTL PT UG credit hours converted to FT (divide TTL PT hrs by 9)
 Number of FT Grad Headcount plus TTL PT Grad credit hours converted to FT (divide TTL PT hrs by 6)

SOURCE: Banner by El Lucian/Student Database



**TOTAL STUDENT ENROLLMENT BY STATE, U.S. TERRITORIES,
INTERNATIONAL AND LEVEL**

FALL 2014 – 2018

STATE, US TERRITORIES, INT	2014			2015			2016			2017			2018		
	UG	GRAD	TTL	UG	GRAD	TTL	UG	GRAD	TTL	UG	GRAD	TTL	UG	GRAD	TTL
ALABAMA	36	16	52	40	13	53	57	9	66	54	5	59	58	9	67
ALASKA										1	1	2			
ARIZONA	11	1	12	8		8	4	1	5	7		7	5		5
ARKANSAS	7	1	8	8		8	6	1	7	8		8	12	1	13
CALIFORNIA	200	12	212	210	11	221	222	12	234	238	9	247	253	12	265
COLORADO	10	5	15	5	1	6	11	1	12	3		3	4	1	5
CONNECTICUT	20	2	22	17	2	19	26		26	31	2	33	34	2	36
DELAWARE	15		15	18	1	19	23		23	19	1	20	16	1	17
DIST. OF COLUMBIA	45	1	46	50	1	51	59	1	60	53		53	52		52
FLORIDA	124	16	140	116	15	131	151	13	164	142	13	155	145	9	154
GEORGIA	906	656	1562	1000	637	1637	1035	510	1545	1122	432	1554	1093	399	1492
HAWAII	2		2												
IDAHO															
ILLINOIS	144	6	150	164	8	172	221	8	229	235	7	242	249	6	255
INDIANA	7		7	16		16	24		24	28		28	26	1	27
IOWA	1		1	1		1	2	1	3	2		2	1		1
KANSAS	6		6	4	1	5	4		4	3		3	3		3
KENTUCKY	9	3	12	9	3	12	15		15	15	1	16	16	2	18
LOUISIANA	30	9	39	27	7	34	29	4	33	36	2	38	41	2	43
MAINE															
MARYLAND	121	7	128	127	3	130	141	7	148	123	5	128	137	5	142
MASSACHUSETTS	8	2	10	16		16	20		20	21		21	24	2	26
MICHIGAN	58	1	59	75	4	79	86	5	91	92	4	96	90	1	91
MINNESOTA	18		18	19		19	24		24	18		18	13		13
MISSISSIPPI	11	4	15	17	2	19	21	4	25	29	5	34	31	5	36
MISSOURI	27	1	28	33	1	34	29	1	30	33		33	36	3	39
NEBRASKA	2		2	3		3	2		2	3		3	4		4
NEVADA	11	1	12	12		12	15		15	14		14	21		21
NEW HAMPSHIRE															
NEW JERSEY	57	5	62	44	6	50	53	1	54	55	1	56	74	2	76
NEW MEXICO															
NEW YORK	154	12	166	157	10	167	161	14	175	187	6	193	200	6	206
NORTH CAROLINA	54	12	66	51	21	72	52	18	70	50	12	62	52	7	59
NORTH DAKOTA															
OHIO	57	5	62	70	6	76	69	9	78	71	3	74	75	2	77
OKLAHOMA	1	1	2	2	3	5	4	4	8	5	2	7	6	1	7
OREGON	7		7	8		8	9		9	6		6	4		4
PENNSYLVANIA	94	5	99	80	3	83	91	3	94	97		97	93	1	94
RHODE ISLAND	1		1	3		3	4		4	5		5	7		7
SOUTH CAROLINA	40	14	54	45	13	58	47	7	54	47	3	50	50	4	54
TENNESSEE	62	5	67	62	8	70	74	6	80	68	3	71	83	2	85
TEXAS	84	7	91	88	5	93	89	4	93	92	5	97	99	4	103
UTAH	1		1	1		1	2		2	1		1			1
VERMONT	1		1	1		1			0						
VIRGINIA	51	9	60	30	4	34	31	5	36	38	4	42	45	5	50
WASHINGTON	11	1	12	9	5	14	12	4	16	10	1	11	14		14
WEST VIRGINIA															
WISCONSIN	16	2	18	21	2	23	20	3	23	33		33	23		23
UNKNOWN	1	3	4	2	5	7	8	8	16	8	5	13	7	2	9
U.S. TERRITORIES															
PUERTO RICO															
VIRGIN ISLANDS	11	1	12	6	1	7	9		9	5		5	3	1	4
INTERNATIONAL	35	92	127	66	118	184	131	127	258	194	158	352	126	87	213
GRAND TOTAL	2567	918	3485	2741	920	3661	3093	791	3884	3302	690	3992	3325	586	3911

SOURCE: Banner by Ellucian/Student Database



**STUDENTS PARTICIPATING IN STUDY ABROAD
PROGRAM BY COUNTRY***

AY 2014 – 2018

	2014-15	2015-16	2016-17	2017-18	2018-19
Argentina		1			
Australia		2	1		
Brazil		1			
China	1	20	20	28	38
Colombia		4			
Cuba		1	2		2
Dominican Republic	1	2			
Ecuador	2				
England	4	4	2		29
Europe		1			
France	1	6	19	21	42
Ghana					6
Greece				1	3
Haiti				1	
India				14	
Italy	3	3			28
Jamaica		8		15	4
Liberia				2	3
Netherlands				1	13
Portugal					1
South Africa	1			1	
South Korea					1
Spain		2	1		4
Thailand		3			
TOTAL	13	58	45	84	174

* Includes Graduate Students

SOURCE: Office of International Education/Study Abroad



STUDENTS PARTICIPATING IN STUDY ABROAD PROGRAM BY MAJOR*

AY 2014 – 2018

MAJOR	2014-15	2015-16	2016-17	2017-18	2018-19
African American Studies					
Africana Women's Study					
Art	3	1	1	1	1
Biology		4	2	2	6
Business Administration	4	14	11	8	26
Business Administration - Master's					1
Computer Science				2	6
Criminal Justice				6	5
Dual-Degree Engineering		2		9	1
Economics					
Education		1	1	4	3
English	1	2		2	1
Fashion Design	1	6	5	6	7
French		1			
History					
Mass Media Arts	2	20	13	23	59
Music				1	1
Physics					
Political Science	1			2	1
Psychology		5	9	10	18
Public Administration					7
Religion/Philosophy					
Social Work		1	1	1	2
Sociology					
Spanish		1			
Speech Comm./Theatre Arts	1		2	7	29
TOTAL	13	58	45	84	174

* Includes Graduate Students

SOURCE: Office of International Education/Study Abroad



ON-CAMPUS STUDENT OCCUPANCY RATES BY RESIDENCE

FALL 2014 – 2018

Building Name	Type	Level	2014			2015			2016			2017			2018		
			Max. Capacity	Actual	%	Max. Capacity	Actual	%	Max. Capacity	Actual	%	Max. Capacity	Actual	%	Max. Capacity	Actual	%
CAU OPERATED																	
Beckwith	Women	Freshman	274	*	*	274	*	*	299	240	80%	288	245	85%	288	266	92%
New Brawley (Residential Apts.)	Coed	Upperclass	477	477	100%	460	457	99%	464	444	96%	464	456	98%	464	454	98%
Bumstead	Women	Freshman	148	*	*	148	*	*	148	*	*	148	*	*	148	*	*
Holmes	Women	Freshman	112	94	84%	113	101	89%	112	101	90%	112	110	98%	112	106	95%
Merner	Women	Freshman	112	100	89%	114	108	95%	114	106	93%	112	112	100%	113	110	97%
Pfeiffer	Men	Upperclass	118	81	69%	117	103	88%	116	116	100%	112	112	100%	114	114	100%
Ware	Men	Upperclass	162	*	*	162	*	*	162	*	*	162	*	*	162	*	*
LEASED HOUSING																	
CAU Suites	Coed	Upperclass	578	440	76%	541	513	95%	565	533	94%	564	547	97%	564	556	99%
Heritage Commons	Coed	Upperclass	456	423	93%	419	404	96%	438	430	98%	438	433	99%	438	437	100%
GRAND TOTAL			2437	1615	66%	2348	1686	72%	2418	1970	81%	2400	2015	84%	2403	2043	85%

* Offline

SOURCE: Housing Occupancy Report



**STUDENT RIGHT TO KNOW
ON-CAMPUS CRIME STATISTICS**

AY 2013-14 – 2017-18

TYPE OF OFFENSE	2013-14	2014-15	2015-16	2016-17	2017-18
Murder/Non-negligent Manslaughter	0	0	0	0	0
Negligent Manslaughter	0	0	0	0	0
Sex offenses - Forcible	0	0	1	0	3
Sex offenses - Non-forcible	0	0	0	0	0
Robbery	4	1	0	4	4
Aggravated Assault	0	1	0	1	0
Burglary	39	11	2	12	9
Motor Vehicle Theft	1	1	0	2	1
Arson	0	0	0	0	0

SOURCE: Campus Safety and Security Survey

**6-YR GRADUATION RATES OF STUDENTS RECEIVING ATHLETICALLY RELATED AID
4-YR AVERAGE FALL 2008 - 2011**

Men's Sports	Grad Rate*	Women's Sports	Grad Rate*
Baseball	29%	Basketball	67%
Football	31%	Softball	60%
Basketball	46%	CC Track	76%
CC Track	69%	Tennis	100%
		Volleyball	77%

* Cohorts Graduated within 6 years

Source: NCAA Academic Success Rate Report



UNDERGRADUATE STUDENT ENROLLMENT



UNDERGRADUATE NEW STUDENT APPLICANT YIELD RATE

FALL 2014 – 2018

	2014			2015			2016			2017			2018		
	New Freshman	New Transfer	TTL	New Freshman	New Transfer	TTL	New Freshman	New Transfer	TTL	New Freshman	New Transfer	TTL	New Freshman	New Transfer	TTL
Completed Applications	5140	532	5672	8616	954	9570	10733	479	11212	13940	838	14778	14942	696	15638
Applicants Admitted	4352	434	4786	4509	392	4901	7711	361	8072	8075	494	8569	7747	475	8222
Enrolled	717	111	828	844	110	954	999	170	1169	914	192	1106	921	158	1079
% of Applicants Admitted	85%	82%	84%	52%	41%	51%	72%	75%	72%	58%	59%	58%	52%	68%	53%
% of Applicants Enrolled	14%	21%	15%	10%	12%	10%	9%	35%	10%	7%	23%	7%	6%	23%	7%
% of Admitted Enrolled	16%	26%	17%	19%	28%	19%	13%	47%	14%	11%	39%	13%	12%	33%	13%

SOURCE: Banner by Ellucian/Student Database



FIRST-TIME ENTERING FRESHMAN PROFILE

FALL 2014 – 2018

Cohort Term	2014		2015		2016		2017		2018	
Application status:										
Number of completed applications	5140		8616		10733		13940		14942	
Number of students admitted	4352	85%	4509	52%	7711	72%	8075	58%	7747	52%
Total number of students enrolled	717	16%	844	19%	999	13%	914	11%	921	12%

ENROLLMENT BY

Gender:

Male	172	24%	217	26%	248	25%	201	22%	200	22%
Female	545	76%	627	74%	751	75%	713	78%	721	78%
TOTAL	717	100%	844	100%	999	100%	914	100%	921	100%

Residence:

Georgia State	188	26%	253	30%	265	27%	294	32%	220	24%
Out-Of-State	513	72%	566	67%	709	71%	611	67%	695	75%
Foreign	16	2%	25	3%	25	3%	9	1%	6	1%
TOTAL	717	100%	844	100%	999	100%	914	100%	921	100%

Intended area of study by School:

Arts & Sciences	509	71%	568	67%	750	75%	680	74%	668	73%
Business Administration	138	19%	184	22%	175	18%	166	18%	196	21%
Education	31	4%	25	3%	17	2%	29	3%	27	3%
Social Work	12	2%	25	3%	19	2%	15	2%	22	2%
Undecided	27	4%	42	5%	38	4%	24	3%	8	1%
TOTAL	717	100%	844	100%	999	100%	914	100%	921	100%

Academic Profile:

Average High School GPA	3.01		2.98		3.18		3.24		3.33	
Average SAT Score	853		840		903		925		1037	
Average ACT Score	18		18		20		20		20	
Average Age	18		18		18		18		18	

SOURCE: Banner by Ellucian/Student Database



**FIRST-TIME FRESHMAN ENROLLMENT BY STATE, U.S. TERRITORIES,
INTERNATIONAL AND GENDER**

FALL 2014 – 2018

STATE, US TERRITORIES, INT	2014			2015			2016			2017			2018		
	M	W	TTL	M	W	TTL	M	W	TTL	M	W	TTL	M	W	TTL
ALABAMA	6	2	8	3	10	13	8	15	23	4	16	20	7	13	20
ALASKA															
ARIZONA	1	1	2		3	3					3	3			
ARKANSAS		3	3	1	1	2	1	3	4		3	3	2	4	6
CALIFORNIA	6	51	57	14	48	62	11	56	67	14	51	65	11	52	63
COLORADO		3	3		2	2		6	6		2	2		1	1
CONNECTICUT		7	7	2	4	6	1	13	14	2	11	13		11	11
DELAWARE	1	6	7	2	7	9	2	7	9	1	7	8		3	3
DIST. OF COLUMBIA	5	24	29	2	11	13	6	15	21	2	7	9	4	10	14
FLORIDA	13	27	40	7	31	38	14	46	60	13	29	42	10	33	43
GEORGIA	65	123	188	84	169	253	87	178	265	78	216	294	65	155	220
HAWAII		1	1												
IDAHO															
ILLINOIS	6	38	44	11	50	61	25	84	109	16	63	79	20	69	89
INDIANA		5	5		9	9	4	8	12	1	3	4	2	9	11
IOWA					1	1		1	1						
KANSAS		1	1	1		1	1		1	1		1	1	1	2
KENTUCKY		3	3		3	3	1	6	7	1	3	4	1	9	10
LOUISIANA	4	2	6	3	3	6	2	11	13	4	11	15	4	13	17
MAINE															
MARYLAND	5	33	38	7	41	48	9	38	47	5	26	31	10	38	48
MASSACHUSETTS		2	2		6	6	2	3	5	1	5	6	1	5	6
MICHIGAN	1	15	16	7	27	34	7	27	34	5	22	27	4	17	21
MINNESOTA	2	6	8		4	4		6	6	1	3	4	2		2
MISSISSIPPI	1	3	4	4	4	8	1	8	9	2	7	9	1	6	7
MISSOURI	1	6	7	5	11	16	1	6	7	2	5	7	5	11	16
NEBRASKA		1	1	1		1					1	1			
NEVADA	1	4	5	1	4	5		3	3	1	1	2	1	7	8
NEW HAMPSHIRE															
NEW JERSEY	3	10	13	4	11	15	1	18	19	4	15	19	5	28	33
NEW MEXICO															
NEW YORK	6	32	38	6	43	49	7	41	48	6	58	64	8	58	66
NORTH CAROLINA	2	15	17	3	11	14	2	20	22	2	12	14	5	14	19
NORTH DAKOTA															
OHIO	4	16	20	4	19	23	5	18	23	4	16	20	8	23	31
OKLAHOMA								1	1		2	2		1	1
OREGON		2	2	2	1	3	1	1	2		1	1			
PENNSYLVANIA	7	32	39	6	20	26	3	29	32	7	25	32	4	31	35
RHODE ISLAND		1	1		2	2	1	1	2		1	1		1	1
SOUTH CAROLINA	3	14	17	4	13	17	3	9	12	3	11	14	4	17	21
TENNESSEE	6	15	21	8	11	19	8	23	31	7	14	21	1	27	28
TEXAS	4	15	19	2	29	31	3	26	29	3	28	31	6	27	33
UTAH		1	1				1		1						
VERMONT					1	1									
VIRGINIA	3	13	16		6	6	3	9	12	2	15	17	2	13	15
WASHINGTON		1	1		1	1	2	3	5		4	4		5	5
WEST VIRGINIA															
WISCONSIN	1	5	6	1	5	6		4	4	3	12	15	1	5	6
U.S. TERRITORIES															
PUERTO RICO															
VIRGIN ISLANDS	2	3	5		1	1	1	4	5						
INTERNATIONAL	13	3	16	21	4	25	23	2	25	6	3	9	3	3	6
OTHER				1		1	2	1	3		1	1	2	1	3
GRAND TOTAL	172	545	717	217	627	844	249	750	999	201	713	914	200	721	921

SOURCE: Banner by Ellucian/Student Database



UNDERGRADUATE ENROLLMENT BY SCHOOL, CLASS AND GENDER

FALL 2014 – 2018

SCHOOL	2014			2015			2016			2017			2018		
	M	W	TTL	M	W	TTL	M	W	TTL	M	W	TTL	M	W	TTL
ARTS & SCIENCES															
New Freshmen	106	403	509	144	424	568	172	578	750	143	537	680	131	535	666
Returning Freshmen	46	108	154	57	148	205	113	156	269	86	178	264	62	146	208
Sophomores	103	341	444	104	331	435	108	347	455	159	467	626	144	477	621
Juniors	85	274	359	102	271	373	100	270	370	96	304	400	126	403	529
Seniors	72	283	355	74	254	328	80	240	320	100	252	352	72	257	329
TOTAL	412	1409	1821	481	1428	1909	573	1591	2164	584	1738	2322	535	1818	2353
BUSINESS ADMINISTRATION															
New Freshmen	48	90	138	58	126	184	65	110	175	51	115	166	59	136	195
Returning Freshmen	28	26	54	19	35	54	68	55	123	48	50	98	24	44	68
Sophomores	49	91	140	57	83	140	53	101	154	76	132	208	55	123	178
Juniors	34	71	105	38	70	108	51	60	111	50	84	134	65	114	179
Seniors	27	69	96	29	72	101	42	80	122	57	64	121	57	80	137
TOTAL	186	347	533	201	386	587	279	406	685	282	445	727	260	497	757
EDUCATION															
New Freshmen	7	24	31	1	24	25	2	15	17	3	26	29	3	24	27
Returning Freshmen	1	8	9	2	11	13	2	8	10		7	7	1	6	7
Sophomores	4	15	19	3	21	24	5	24	29	5	18	23	4	19	23
Juniors	2	13	15	4	10	14	3	15	18	5	24	29	5	19	24
Seniors	2	15	17	1	13	14	2	10	12	7	18	25	2	20	22
TOTAL	16	75	91	11	79	90	14	72	86	20	93	113	15	88	103
SOCIAL WORK															
New Freshmen		12	12	4	21	25		19	19		15	15	3	19	22
Returning Freshmen		9	9	1	7	8	2	7	9	2	7	9	1	6	7
Sophomores	3	22	25	3	21	24	3	26	29	3	21	24		17	17
Juniors	2	21	23	3	19	22	5	15	20	4	23	27	2	19	21
Seniors	2	15	17	1	21	22	1	21	22	2	17	19	6	18	24
TOTAL	7	79	86	12	89	101	11	88	99	11	83	94	12	79	91
SCHOOL UNDECIDED															
New Freshmen	11	16	27	10	32	42	9	29	38	4	20	24	4	7	11
Returning Freshmen	2	6	8	5	3	8	6	12	18	4	12	16	4	6	10
Sophomores	1		1	3	1	4	1	2	3	4	2	6			0
Juniors															
Seniors															
TOTAL	14	22	36	18	36	54	16	43	59	12	34	46	8	13	21

SOURCE: Banner by ElLucian/Student Database



UNDERGRADUATE ENROLLMENT BY SCHOOL AND GENDER
FALL 2014 – 2018

SCHOOL	2014				2015				2016				2017				2018			
	M	W	TTL	%	M	W	TTL	%	M	W	TTL	%	M	W	TTL	%	M	W	TTL	%
Arts and Sciences	412	1409	1821	71%	481	1428	1909	70%	573	1591	2164	70%	584	1738	2322	70%	535	1818	2353	71%
Business Administration	186	347	533	21%	201	386	587	21%	279	406	685	22%	282	445	727	22%	260	497	757	23%
Education	16	75	91	4%	11	79	90	3%	14	72	86	3%	20	93	113	3%	15	88	103	3%
Social Work	7	79	86	3%	12	89	101	4%	11	88	99	3%	11	83	94	3%	12	79	91	3%
Undecided	14	22	36	1%	18	36	54	2%	16	43	59	2%	12	34	46	1%	8	13	21	1%
GRAND TOTAL	635	1932	2567	100%	723	2018	2741	100%	893	2200	3093	100%	909	2393	3302	100%	830	2495	3325	100%
TOTAL PERCENT	25%	75%	100%		26%	74%	100%		29%	71%	100%		28%	72%	100%		25%	75%	100%	

SOURCE: Banner by Ellucian/Student Database



UNDERGRADUATE ENROLLMENT BY SCHOOL AND PROGRAM

FALL 2014 – 2018

SCHOOL/PROGRAM	2014	2015	2016	2017	2018
ARTS & SCIENCES					
Art	36	34	46	63	50
Biology	290	300	374	403	418
Chemistry	31	24	26	46	50
Computer and Information Systems	39	43	68	82	68
Computer Science	38	58	85	86	69
Criminal Justice Administration	225	200	244	267	282
Cybersecurity					4
Dual Deg Engineer - Chemistry*	15	23	19	13	13
Dual Deg Engineer - Physics*	22	20	29	38	46
Dual Deg Engineer- Comp Sci*	21	16	27	23	16
Dual Deg Engineer- Math				4	4
Dual Deg Engineer- Biology				5	
English	35	33	35	31	37
Fashion Design & Merchandising	132	168	166	157	143
French	3	3	3	2	2
History	15	10	11	14	18
Mass Media Arts	429	475	493	519	503
Mathematics	17	20	14	16	15
Music	24	29	30	32	42
Philosophy	4	5	8	6	5
Physics	4	3	4	2	1
Political Science	66	66	77	94	105
Psychology	275	285	302	307	311
Religion	2	5	5	4	4
Sociology	29	24	35	36	44
Spanish		1	2	2	4
Speech Comm and Theatre Arts				23	0
Speech Communication	28	17	19		30
Theatre Arts	41	47	42	47	69
TOTAL	1821	1909	2164	2322	2353
BUSINESS ADMINISTRATION					
Accounting	74	76	80	83	89
Business Administration (Concentrations: Entrepreneurship Mgmt, Finance, International Bus., Management, Accounting, Marketing, Sports & Ent. Mgmt., Supply Chain Mgmt.)	444	501	593	634	651
Economics	15	10	12	10	17
TOTAL	533	587	685	727	757
EDUCATION					
Early Childhood Education	79	77	50	66	64
Educational Studies	12	13	36	47	39
TOTAL	91	90	86	113	103
SOCIAL WORK					
Social Work	86	101	99	94	91
TOTAL	86	101	99	94	91
UNDECIDED					
Major Not Declared	33	50	47	30	11
Non Degree Seeking	3	4	12	16	10
TOTAL	36	54	59	46	21
GRAND TOTAL	2567	2741	3093	3302	3325

* 3 plus 2 Dual Degree Program with partner engineering institutions

SOURCE: Banner by Ellucian/Student Database



UNDERGRADUATE ENROLLMENT BY ETHNICITY AND GENDER
FALL 2014 – 2018

ETHNICITY	2014				2015				2016				2017				2018			
	M	W	TTL	%	M	W	TTL	%	M	W	TTL	%	M	W	TTL	%	M	W	TTL	%
Non-Resident Alien	22	13	35	1%	51	15	66	2%	115	16	131	4%	169	25	194	6%	105	21	126	4%
American Indian/Alaskan Native	5	4	9	0%	1	2	3	0%	1	2	3	0%	2	2	4	0%	1	5	6	0%
Asian or Pacific Islander	4	1	5	0%	4	1	5	0%	4	2	6	0%	1	1	2	0%	1	1	2	0%
Black or African American	517	1707	2224	87%	560	1733	2293	84%	631	1926	2557	83%	667	2146	2813	85%	660	2292	2952	89%
Hispanic	2	7	9	0%	4	7	11	0%	2	4	6	0%	1	3	4	0%	1	5	6	0%
White/Non-Hispanic		1	1	0%		1	1	0%	3	3	6	0%	1	2	3	0%	1	2	3	0%
Other/Unknown	85	199	284	11%	103	259	362	13%	137	247	384	12%	68	214	282	9%	61	169	230	7%
GRAND TOTAL	635	1932	2567	100%	723	2018	2741	100%	893	2200	3093	100%	909	2393	3302	100%	830	2495	3325	100%

SOURCE: Banner by Ellucian/Student Database



UNDERGRADUATE STUDENT RELIGIOUS PREFERENCE BY GENDER

FALL 2014 – 2018

RELIGION/DENOMINATION	2014				2015				2016				2017				2018			
	M	W	TTL	%	M	W	TTL	%	M	W	TTL	%	M	W	TTL	%	M	W	TTL	%
African Methodist Episcopal	8	16	24	1%	5	11	16	1%	5	7	12	0%	3	5	8	0%	3	6	9	0%
Agnostic														2			5	5	10	0%
Anglican																		1	1	0%
Atheist																	1	1	2	0%
Baptist	160	462	622	24%	152	500	652	24%	184	657	841	27%	220	826	1046	32%	222	929	1151	35%
Buddhist										1	1	0%			0	0%			0	0%
Catholic	17	59	76	3%	22	53	75	3%	16	51	67	2%	12	50	62	2%	14	42	56	2%
Christian	194	671	865	34%	210	670	880	32%	214	599	813	26%	192	555	747	23%	155	471	626	19%
Christian Methodist Episcopal		2	2	0%		1	1	0%		1	1	0%	1	3	4	0%	1	3	4	0%
Christian Scientist										1	1	0%		1	1	0%		2	2	0%
Church of Christ									4	21	25	1%	4	26	30	1%	7	33	40	1%
Church of God	3	7	10	0%	4	5	9	0%	5	5	10	0%	3	8	11	0%	1	4	5	0%
Church of God in Christ	2	9	11	0%	2	6	8	0%	5	14	19	1%	12	39	51	2%	15	58	73	2%
Disciples of Christ										1	1	0%	1	1	2	0%	1	3	4	0%
Episcopal	1	6	7	0%	1	3	4	0%		3	3	0%		1	1	0%		2	2	0%
Islamic	9	19	28	1%	18	19	37	1%	46	12	58	2%	50	12	62	2%	33	8	41	1%
Jehovah's Witness	2	2	4	0%	2	1	3	0%	3	3	6	0%	4	3	7	0%	4	7	11	0%
Jewish																		1	1	0%
Lutheran		6	6	0%	2	2	4	0%	4		4	0%	4	2	6	0%	3	3	6	0%
Methodist									1	9	10	0%	4	14	18	1%	11	22	33	1%
Muslim									13	5	18	1%	9	7	16	0%	8	12	20	1%
Non-Denomination										4	4	0%	1	9	10	0%	1	11	12	0%
Orthodox																	1		1	0%
Other	88	325	413	16%	99	343	442	16%	80	280	360	12%	73	247	320	10%	63	222	285	9%
Pentecostal	6	27	33	1%	6	30	36	1%	10	35	45	1%	10	40	50	2%	12	49	61	2%
Presbyterian		2	2	0%		2	2	0%		1	1	0%	1	1	2	0%	1	2	3	0%
Seventh Day Adventist	2	5	7	0%	2	6	8	0%	1	10	11	0%	1	8	9	0%	2	6	8	0%
Unitarian										1	1	0%		1	1	0%		1	1	0%
United Methodist	8	19	27	1%	8	19	27	1%	12	13	25	1%	6	10	16	0%	3	4	7	0%
Unknown	135	295	430	17%	190	347	537	20%	290	466	756	24%	298	522	820	25%	263	587	850	26%
GRAND TOTAL	635	1932	2567	100%	723	2018	2741	100%	893	2200	3093	100%	909	2393	3302	100%	830	2495	3325	100%

SOURCE: Banner by Ellucian/Student Database



UNDERGRADUATE ENROLLMENT BY RESIDENCY AND GENDER

FALL 2014 – 2018

TERM RESIDENCY/GENDER	2014				2015				2016				2017				2018			
	M	W	TTL	%	M	W	TTL	%	M	W	TTL	%	M	W	TTL	%	M	W	TTL	%
GEORGIA STATE	288	618	906	35%	335	665	1000	36%	368	667	1035	33%	334	788	1122	34%	322	771	1093	33%
OUT OF STATE & U.S. TERRITORIES	324	1301	1625	63%	335	1338	1673	61%	406	1516	1922	62%	404	1574	1978	60%	403	1702	2105	63%
UNKNOWN STATE	1		1	0%	2		2	0%	4	1	5	0%	2	6	8	0%		1	1	0%
INTERNATIONAL	22	13	35	1%	51	15	66	2%	115	16	131	4%	169	25	194	6%	105	21	126	4%
GRAND TOTAL	635	1932	2567	100%	723	2018	2741	100%	893	2200	3093	100%	909	2393	3302	100%	830	2495	3325	100%

SOURCE: Banner by Ellucian/Student Database



UNDERGRADUATE ENROLLMENT BY STATE, U.S. TERRITORIES AND INTERNATIONAL

FALL 2014 – 2018

STATE, US TERRITORIES, INT	2014			2015			2016			2017			2018		
	M	W	TTL	M	W	TTL	M	W	TTL	M	W	TTL	M	W	TTL
ALABAMA	9	27	36	10	30	40	21	36	57	16	38	54	17	41	58
ALASKA										1		1			
ARIZONA	4	7	11	1	7	8		4	4		7	7		5	5
ARKANSAS	1	6	7	2	6	8	2	4	6	1	7	8	3	9	12
CALIFORNIA	39	161	200	38	172	210	38	184	222	39	199	238	44	209	253
COLORADO	1	9	10		5	5	1	10	11		3	3		4	4
CONNECTICUT	1	19	20	4	13	17	6	20	26	4	27	31	3	31	34
DELAWARE	5	10	15	6	12	18	8	15	23	4	15	19	2	14	16
DIST. OF COLUMBIA	8	37	45	10	40	50	15	44	59	14	39	53	12	40	52
FLORIDA	39	85	124	30	86	116	38	113	151	44	98	142	37	108	145
GEORGIA	288	618	906	335	665	1000	368	667	1035	334	788	1122	322	771	1093
HAWAII		2	2												
IDAHO															
ILLINOIS	23	121	144	30	134	164	47	174	221	52	183	235	53	196	249
INDIANA	1	6	7	2	14	16	5	19	24	5	23	28	5	21	26
IOWA		1	1		1	1		2	2		2	2		1	1
KANSAS		6	6	1	3	4	2	2	4	1	2	3	2	1	3
KENTUCKY		9	9		9	9	1	14	15	2	13	15	2	14	16
LOUISIANA	9	21	30	9	18	27	4	25	29	10	26	36	9	32	41
MAINE															
MARYLAND	27	94	121	19	108	127	24	117	141	19	104	123	24	113	137
MASSACHUSETTS	1	7	8	1	15	16	3	17	20	1	20	21	2	22	24
MICHIGAN	9	49	58	13	62	75	14	72	86	17	75	92	21	69	90
MINNESOTA	5	13	18	4	15	19	4	20	24	4	14	18	4	9	13
MISSISSIPPI	2	9	11	5	12	17	5	16	21	7	22	29	6	25	31
MISSOURI	3	24	27	6	27	33	5	24	29	8	25	33	11	25	36
NEBRASKA	1	1	2	2	1	3	1	1	2	1	2	3	2	2	4
NEVADA	2	9	11	2	10	12	3	12	15	5	9	14	5	16	21
NEW HAMPSHIRE															
NEW JERSEY	13	44	57	9	35	44	10	43	53	10	45	55	13	61	74
NEW MEXICO															
NEW YORK	30	124	154	24	133	157	28	133	161	28	159	187	24	176	200
NORTH CAROLINA	10	44	54	14	37	51	8	44	52	8	42	50	8	44	52
NORTH DAKOTA															
OHIO	12	45	57	15	55	70	14	55	69	15	56	71	18	57	75
OKLAHOMA		1	1	1	1	2	1	3	4		5	5		6	6
OREGON	1	6	7	3	5	8	2	7	9	1	5	6		4	4
PENNSYLVANIA	15	79	94	15	65	80	19	72	91	20	77	97	15	78	93
RHODE ISLAND		1	1		3	3	1	3	4		5	5		7	7
SOUTH CAROLINA	9	31	40	12	33	45	11	36	47	12	35	47	10	40	50
TENNESSEE	17	45	62	21	41	62	27	47	74	25	43	68	20	63	83
TEXAS	12	72	84	15	73	88	18	71	89	14	78	92	14	85	99
UTAH		1	1		1	1	1	1	2	1		1			
VERMONT		1	1		1	1									
VIRGINIA	8	43	51	7	23	30	9	22	31	6	32	38	10	35	45
WASHINGTON	3	8	11	2	7	9	5	7	12	1	9	10		14	14
WEST VIRGINIA															
WISCONSIN	2	14	16	2	19	21	3	17	20	7	26	33	5	18	23
UNKNOWN	1		1	2		2	5	3	8	2	6	8	2	5	7
U.S. TERRITORIES															
PUERTO RICO															
VIRGIN ISLANDS	2	9	11		6	6	1	8	9	1	4	5		3	3
INTERNATIONAL	22	13	35	51	15	66	115	16	131	169	25	194	105	21	126
GRAND TOTAL	635	1932	2567	723	2018	2741	893	2200	3093	909	2393	3302	830	2495	3325

SOURCE: Banner by Ellucian/Student Database



**UNDERGRADUATE INTERNATIONAL STUDENT ENROLLMENT BY
COUNTRY AND GENDER**

FALL 2014 – 2018

COUNTRY	2014			2015			2016			2017			2018		
	M	W	TTL	M	W	TTL	M	W	TTL	M	W	TTL	M	W	TTL
Angola	1		1	1		1				1		1			
Anguilla		1	1		1	1		1	1						
Bahamas	1	1	2				1	1	2	1	2	3		2	2
Bermuda	1	3	4		2	2		2	2		1	1		1	1
China											1	1			
Cote'd'ivoirie											1	1			
Canada					1	1									
Cayman Islands															
Curacao							1		1	1		1	1	1	2
Egypt							1		1				1		1
Guyana											1	1		1	1
India					1	1									
Libya										1		1	1		1
Myanmar											1	1			
Nigeria				1		1		1	1	1		1	1	1	2
Portugal							1		1						
Republic of Serbia													1		1
Saudi Arabia	4		4	7		7	102	10	112	163	18	181	100	15	115
South Korea											1	1			
Tanzania, United Republic of		1	1		1	1		1	1						
Trinidad & Tobago	1		1												
Unknown	14	7	21	42	9	51	9		9						
GRAND TOTAL	22	13	35	51	15	66	115	16	131	169	25	194	105	21	126

SOURCE: Banner by Ellucian/Student Database



GRADUATE STUDENT ENROLLMENT



GRADUATE NEW STUDENT APPLICANT YIELD RATE

FALL 2014 – 2018

	2014	2015	2016	2017	2018
Completed Applications	621	1034	533	342	307
Applicants Admitted	479	387	378	280	241
Enrolled	273	246	222	141	170
% of Applicants Admitted	77%	37%	71%	82%	79%
% of Applicants Enrolled	44%	24%	42%	41%	55%
% of Admitted Enrolled	57%	64%	59%	50%	71%

SOURCE: Banner by Ellucian/Student Database



**GRADUATE ENROLLMENT BY SCHOOL, DEGREE TYPE AND GENDER
FALL 2014 – 2018**

SCHOOL	2014			2015			2016			2017			2018		
	M	W	TTL	M	W	TTL	M	W	TTL	M	W	TTL	M	W	TTL
ARTS & SCIENCES															
Doctorate	54	75	129	54	77	131	48	74	122	46	76	122	42	79	121
Master's	71	102	173	85	93	178	92	106	198	69	104	173	55	79	134
TOTAL	125	177	302	139	170	309	140	180	320	115	180	295	97	158	255
BUSINESS ADMINISTRATION															
Master's	50	49	99	40	48	88	25	46	71	20	29	49	17	21	38
TOTAL	50	49	99	40	48	88	25	46	71	20	29	49	17	21	38
EDUCATION															
Doctorate	24	36	60	24	47	71	26	38	64	24	33	57	28	41	69
Masters	17	66	83	23	67	90	29	38	67	33	58	91	23	57	80
Specialist	2	1	3	2		2	1	1	2		1	1			
Certificate					1	1		1	1	1	1	2			
TOTAL	43	103	146	49	115	164	56	78	134	58	93	151	51	98	149
SOCIAL WORK															
Doctorate	3	26	29	4	27	31	4	28	32	4	27	31	3	23	26
Master's	55	286	341	53	275	328	37	197	234	22	169	191	16	100	116
TOTAL	58	312	370	57	302	359	41	225	266	26	196	222	19	123	142
SCHOOL UNDECIDED / NON DEGREE SEEKING															
Doctorate														1	1
Master's	1		1										1		1
TOTAL	1		1										1	1	2

SOURCE: Banner by Ellucian/Student Database



GRADUATE ENROLLMENT BY SCHOOL AND GENDER
FALL 2014 – 2018

SCHOOL	2014				2015				2016				2017				2018			
	M	W	TTL	%	M	W	TTL	%	M	W	TTL	%	M	W	TTL	%	M	W	TTL	%
Arts and Sciences	125	177	302	33%	139	170	309	34%	140	180	320	40%	115	180	295	43%	97	158	255	44%
Business Administration	50	49	99	11%	40	48	88	10%	25	46	71	9%	20	29	49	7%	17	21	38	6%
Education	43	103	146	16%	49	115	164	18%	56	78	134	17%	58	93	151	22%	51	98	149	25%
Social Work	58	312	370	40%	57	302	359	39%	41	225	266	34%	26	169	195	28%	19	123	142	24%
Undecided				0%				0%				0%				0%	1	1	2	0%
GRAND TOTAL	277	641	918	100%	285	635	920	100%	262	529	791	100%	219	471	690	100%	185	401	586	100%
TOTAL PERCENT	30%	70%	100%		31%	69%	100%		33%	67%	100%		32%	68%	100%		32%	68%	100%	

SOURCE: Banner by Ellucian/Student Database



GRADUATE ENROLLMENT BY SCHOOL, PROGRAM, DEGREE LEVEL AND GENDER

FALL 2018

SCHOOL/PROGRAM	DOCTORATE		MASTER'S		SPECIALIST		CERTIFICATE		TTL		GRAND TTL
	M	W	M	W	M	W	M	W	M	W	
ARTS & SCIENCES											
African American Studies			2	5					2	5	7
Africana Womens Studies				9					0	9	9
Biology	6	10	1	3					7	13	20
Chemistry	11	17	7	5					18	22	40
Computer and Information Sys*			4						4		4
Computer Science			7	2					7	2	9
Criminal Justice Admin			3	7					3	7	10
English			1	10					1	10	11
History			1	2					1	2	3
Humanities	13	36							13	36	49
Mathematics			2	4					2	4	6
Physics			4	2					4	2	6
Political Science	12	16	3	4					15	20	35
Public Administration			15	21					15	21	36
Romance Languages											
Sociology			5	5					5	5	10
Systems Science†											
TOTAL	42	79	55	79					97	158	255
BUSINESS ADMINISTRATION											
Accounting			3	2					3	2	5
Business Administration (Concentrations: Entrepreneurship Mgmt, Finance, Marketing, Sports & Ent. Mgmt., Supply Chain Mgmt.)			14	19					14	19	33
Economics											
TOTAL			17	21					17	21	38
EDUCATION											
Clinical Mental Hlth Counseling			4	20					4	20	24
Community Counseling			1	1					1	1	2
Early Childhood Education‡											
Educational Leadership	10	19	6	7					16	26	42
Higher Ed - Ed Leadership	13	17							13	17	30
Higher Ed Leadership Online	5	5							5	5	10
School Counseling			7	26					7	26	33
Secondary Education (Math or Science)			1	1					1	1	2
Special Ed - General Curriculum			4	2					4	2	6
TOTAL	28	41	23	57					51	98	149
SOCIAL WORK											
Social Work			16	100					16	100	116
SW Plan-Admin and Soc Sci	3	23							3	23	26
TOTAL	3	23	16	100					19	123	142
UNDECIDED											
Major Not Declared											
Non Degree Seeking		1	1						1	1	2
TOTAL		1	1						1	1	2
GRAND TOTAL	73	144	112	257					185	401	586

† Phased Out 2005-2008

‡ Post-Bacc Certification

SOURCE: Banner by Ellucian/Student Database



GRADUATE ENROLLMENT BY SCHOOL AND PROGRAM

FALL 2014 – 2018

SCHOOL/PROGRAM	2014	2015	2016	2017	2018
ARTS & SCIENCES					
African American Studies	37	39	32	26	27
Africana Womens Studies	19	15	17	24	20
Biology	35	31	22	19	20
Chemistry	38	40	40	44	40
Computer Science*	27	41	37	19	13
Criminal Justice Administration	10	8	12	12	10
English	25	23	29	27	24
French					
History	7	7	4	7	4
Mathematics	7	9	10	11	6
Physics	10	9	19	14	6
Political Science	35	36	35	34	35
Public Administration	46	43	49	43	36
Romance Languages	2	3	3	4	4
Sociology	3	4	10	11	10
Spanish					
Systems Science†	1	1	1		
TOTAL	302	309	320	295	255
BUSINESS ADMINISTRATION					
Accounting	18	13	18	7	5
Business Administration (Concentrations: Entrepreneurship Mgmt., Finance, Marketing, Sports & Entertainment Mgmt., Supply Chain Mgmt.)	78	74	51	40	33
Economics	3	1	2	2	
TOTAL	99	88	71	49	38
EDUCATION					
Community Counseling**	24	23	12	21	26
Early Childhood Education‡		1	1	1	
Educational Leadership	87	99	89	85	82
School Counseling	25	35	25	33	33
Secondary Education (Math or Science)	2	2	5	2	2
Special Ed - General Curriculum	8	4	2	9	6
TOTAL	146	164	134	151	149
SOCIAL WORK					
Social Work	341	328	234	164	116
SW Policy, Planning & Administration	29	31	32	31	26
TOTAL	370	359	266	195	142
UNDECIDED					
Major Not Declared	1				
Non Degree Seeking					2
TOTAL	1				2
GRAND TOTAL	918	920	791	690	586

* Includes those students in old major name Computer Science Info

** Name change to Clinical Mental Health Counseling

† Phased out 2005-2008

‡ Includes Post-bacc Certification

SOURCE: Banner by Ellucian/Student Database



GRADUATE ENROLLMENT BY ETHNICITY AND GENDER

FALL 2014 – 2018

ETHNICITY	2014				2015				2016				2017				2018			
	M	W	TTL	%	M	W	TTL	%	M	W	TTL	%	M	W	TTL	%	M	W	TTL	%
Non Resident Alien	44	48	92	10%	58	60	118	13%	58	69	127	16%	67	91	158	23%	46	41	87	15%
American Indian/Alaskan Native		5	5	0%		2	2	0%				0%		1	1	0%	0	1	1	0%
Asian or Pacific Islander	4	5	9	1%	8	4	12	1%	6	3	9	1%	1	2	3	0%	0	0	0	0%
Black or African American	189	517	706	77%	177	490	667	73%	157	369	526	66%	138	330	468	68%	127	326	453	77%
Hispanic	3	2	5	1%	1	1	2	0%	1	3	4	1%		3	3	0%	0	2	2	0%
White/Non-Hispanic	3	2	5	1%	1	2	3	0%		3	3	0%	1	1	2	0%	1	1	2	0%
Other/Unknown	34	62	96	10%	40	76	116	13%	40	82	122	15%	12	43	55	8%	11	30	41	7%
GRAND TOTAL	277	641	918	100%	285	635	920	100%	262	529	791	100%	219	471	690	100%	185	401	586	100%

SOURCE: Banner by Ellucian/Student Database



GRADUATE STUDENT RELIGIOUS PREFERENCE BY GENDER

FALL 2014 – 2018

RELIGION/DENOMINATION	2014				2015				2016				2017				2018			
	M	W	TTL	%	M	W	TTL	%	M	W	TTL	%	M	W	TTL	%	M	W	TTL	%
African Methodist Episcopal	3	12	15	2%	4	11	15	2%	4	11	15	2%	5	9	14	2%	1	7	8	1%
Baptist	56	152	208	23%	58	125	183	20%	41	86	127	16%	25	77	102	15%	20	74	94	14%
Catholic	7	15	22	2%	8	16	24	3%	5	11	16	2%	5	10	15	2%	5	6	11	2%
Christian	64	220	284	31%	58	200	258	28%	62	136	198	25%	55	125	180	26%	54	120	174	25%
Christian Methodist Episcopal																				
Church of God	1	3	4	0%	1	1	2	0%				0%	1		1	0%	1	1	2	0%
Church of God in Christ		4	4	0%		7	7	1%		7	7	1%		3	3	0%	1	1	2	0%
Episcopal		2	2	0%		2	2	0%		2	2	0%		1	1	0%	1	1	2	0%
Evangelical																				
Holiness																				
Islamic	34	24	58	6%	53	41	94	10%	54	58	112	14%	39	53	92	13%	25	23	48	7%
Jehovah's Witness		4	4	0%		1	1	0%		1	1	0%								
Lutheran														1	1	0%		1	1	0%
Methodist													1	1	2	0%				0%
Muslim																	2		2	0%
Non-Denomination													1		1	0%	1		1	0%
Other	36	65	101	11%	23	57	80	9%	18	44	62	8%	17	36	53	8%	9	29	38	6%
Pentecostal	6	8	14	2%	5	6	11	1%	2	5	7	1%	1	2	3	0%	1	1	2	0%
Presbyterian						1	1			1	1			2	2	0%				0%
Seventh Day Adventist	1	5	6	1%	1	4	5	1%	1	2	3	0%		3	3	0%	1	3	4	1%
United Methodist	4	9	13	1%	2	8	10	1%	1	4	5	1%	3	2	5	1%	1	3	4	1%
Unknown	65	118	183	20%	72	155	227	25%	74	161	235	30%	66	146	212	31%	62	131	193	28%
GRAND TOTAL	277	641	918	100%	285	635	920	100%	262	529	791	100%	219	471	690	100%	185	401	586	85%

SOURCE: Banner by Ellucian/Student Database



GRADUATE ENROLLMENT BY RESIDENCY AND GENDER

FALL 2014– 2018

TERM	2014				2015				2016				2017				2018			
	M	W	TTL	%	M	W	TTL	%	M	W	TTL	%	M	W	TTL	%	M	W	TTL	%
GEORGIA STATE	192	464	656	71%	172	465	637	69%	161	349	510	64%	127	305	432	63%	113	286	399	68%
OUT OF STATE & U.S. TERRITORIES	41	129	170	19%	53	107	160	17%	41	105	146	18%	24	71	95	14%	26	72	98	17%
UNKNOWN STATE					2	3	5	1%	2	6	8	1%	1	4	5	1%		2	2	0%
INTERNATIONAL	44	48	92	10%	58	60	118	13%	58	69	127	16%	67	91	158	23%	46	41	87	15%
GRAND TOTAL	277	641	918	100%	285	635	920	100%	262	529	791	100%	219	471	690	100%	185	401	586	100%

SOURCE: Banner by Ellucian/Student Database



GRADUATE ENROLLMENT BY STATE, U.S. TERRITORIES AND INTERNATIONAL

FALL 2014 – 2018

STATE, US TERRITORIES, INT	2014			2015			2016			2017			2018		
	M	W	TTL	M	W	TTL	M	W	TTL	M	W	TTL	M	W	TTL
ALABAMA	9	27	36	10	30	40	21	36	57	16	38	54	17	41	58
ALASKA										1		1			
ARIZONA	4	7	11	1	7	8		4	4		7	7		5	5
ARKANSAS	1	6	7	2	6	8	2	4	6	1	7	8	3	9	12
CALIFORNIA	39	161	200	38	172	210	38	184	222	39	199	238	44	209	253
COLORADO	1	9	10		5	5	1	10	11		3	3		4	4
CONNECTICUT	1	19	20	4	13	17	6	20	26	4	27	31	3	31	34
DELAWARE	5	10	15	6	12	18	8	15	23	4	15	19	2	14	16
DIST. OF COLUMBIA	8	37	45	10	40	50	15	44	59	14	39	53	12	40	52
FLORIDA	39	85	124	30	86	116	38	113	151	44	98	142	37	108	145
GEORGIA	288	618	906	335	665	1000	368	667	1035	334	788	1122	322	771	1093
HAWAII		2	2												
IDAHO															
ILLINOIS	23	121	144	30	134	164	47	174	221	52	183	235	53	196	249
INDIANA	1	6	7	2	14	16	5	19	24	5	23	28	5	21	26
IOWA		1	1		1	1		2	2		2	2		1	1
KANSAS		6	6	1	3	4	2	2	4	1	2	3	2	1	3
KENTUCKY		9	9		9	9	1	14	15	2	13	15	2	14	16
LOUISIANA	9	21	30	9	18	27	4	25	29	10	26	36	9	32	41
MAINE															
MARYLAND	27	94	121	19	108	127	24	117	141	19	104	123	24	113	137
MASSACHUSETTS	1	7	8	1	15	16	3	17	20	1	20	21	2	22	24
MICHIGAN	9	49	58	13	62	75	14	72	86	17	75	92	21	69	90
MINNESOTA	5	13	18	4	15	19	4	20	24	4	14	18	4	9	13
MISSISSIPPI	2	9	11	5	12	17	5	16	21	7	22	29	6	25	31
MISSOURI	3	24	27	6	27	33	5	24	29	8	25	33	11	25	36
NEBRASKA	1	1	2	2	1	3	1	1	2	1	2	3	2	2	4
NEVADA	2	9	11	2	10	12	3	12	15	5	9	14	5	16	21
NEW HAMPSHIRE															
NEW JERSEY	13	44	57	9	35	44	10	43	53	10	45	55	13	61	74
NEW MEXICO															
NEW YORK	30	124	154	24	133	157	28	133	161	28	159	187	24	176	200
NORTH CAROLINA	10	44	54	14	37	51	8	44	52	8	42	50	8	44	52
NORTH DAKOTA															
OHIO	12	45	57	15	55	70	14	55	69	15	56	71	18	57	75
OKLAHOMA		1	1	1	1	2	1	3	4		5	5		6	6
OREGON	1	6	7	3	5	8	2	7	9	1	5	6		4	4
PENNSYLVANIA	15	79	94	15	65	80	19	72	91	20	77	97	15	78	93
RHODE ISLAND		1	1		3	3	1	3	4		5	5		7	7
SOUTH CAROLINA	9	31	40	12	33	45	11	36	47	12	35	47	10	40	50
TENNESSEE	17	45	62	21	41	62	27	47	74	25	43	68	20	63	83
TEXAS	12	72	84	15	73	88	18	71	89	14	78	92	14	85	99
UTAH		1	1		1	1	1	1	2	1		1			
VERMONT		1	1		1	1									
VIRGINIA	8	43	51	7	23	30	9	22	31	6	32	38	10	35	45
WASHINGTON	3	8	11	2	7	9	5	7	12	1	9	10		14	14
WEST VIRGINIA															
WISCONSIN	2	14	16	2	19	21	3	17	20	7	26	33	5	18	23
UNKNOWN	1		1	2		2	5	3	8	2	6	8	2	5	7
U.S. TERRITORIES															
PUERTO RICO															
VIRGIN ISLANDS	2	9	11		6	6	1	8	9	1	4	5		3	3
INTERNATIONAL	22	13	35	51	15	66	115	16	131	169	25	194	105	21	126
GRAND TOTAL	635	1932	2567	723	2018	2741	893	2200	3093	909	2393	3302	830	2495	3325

SOURCE: Banner by Ellucian/Student Database



GRADUATE INTERNATIONAL STUDENT ENROLLMENT BY COUNTRY AND GENDER
FALL 2014 – 2018

COUNTRY	2014			2015			2016			2017			2018		
	M	W	TTL	M	W	TTL	M	W	TTL	M	W	TTL	M	W	TTL
Aguilla											1	1		1	1
Bahamas													3	1	4
Bangladesh							1		1	1		1			
Canada	1	1	2	1		1	1		1						
China	1		1					1	1						
Curacao													1		1
Ghana													1		1
India		1	1		2	2	2	3	5	4	2	6		1	1
Islamic Republic of Iran		1	1		1	1		1	1	1		1	1		1
Jamaica								1	1						
Liberia							1	1	2	1	1	2	1	1	2
Libyan Arab Jamahiriya				1		1	2		2				2		2
Nepal													1		1
Nigeria										1	1	2	3		3
Saudi Arabia	3	5	8	8	12	20	46	59	105	57	85	142	33	34	67
Sri Lanka	1		1	1		1		1	1	1		1		1	1
United Kingdom							1		1	1		1		1	1
Yemen								1	1		1	1		1	1
Zimbabwe		1	1												
Unknown	38	39	77	47	45	92	4	1	5						
GRAND TOTAL	44	48	92	58	60	118	58	69	127	67	91	158	46	41	87

SOURCE: Banner by Ellucian/Student Database



STUDENT RETENTION, GRADUATION & PLACEMENT



UNDERGRADUATE STUDENT RETENTION AND GRADUATION REPORT

FALL 2010 – 2018

	2010 = 852		2011=833		2012=637		2013=781		2014=717		2015=844		2016=999		2017=914		2018=921		
	#	%	#	%	#	%	#	%	#	%	#	%	#	%	#	%	#	%	
RETENTION																			
1 Total number of new freshmen full-time and part-time (first-time-in-college)	852		833		637		781		717		844		999		914		921		
2 Average high school GPA	2.98		3.5		3.06		3.05		3.01		2.98		3.18		3.24		3.33		
3 Number of students from Line 1 returning for a 2nd year.	556	65%	508	61%	408	64%	469	60%	476	66%	561	66%	696	70%	636	70%			
4 Number of students from Line 1 who returned for a 3rd year	403	47%	398	48%	328	51%	408	52%	403	56%	466	55%	550	55%					
5 Number of students from Line 1 who returned for a 4th year	351	41%	367	44%	316	50%	374	48%	359	50%	412	49%							
6 Number of students from Line 1 who returned for a 5th year	135	16%	113	14%	79	12%	109	14%	96	13%									
7 Number of students from Line 1 who returned for a 6th year	26	3%	13	2%	22	3%	24	3%											

GRADUATION

8 Number of students from Line 1 who graduated in 4 years (or less)	199	23%	215	26%	211	33%	237	30%	197	27%	196	23%							
9 Number of students from Line 1 who graduated in 5 years or less (include those from line 7)	292	34%	313	38%	267	42%	303	39%	280	39%									
10 Number of students from Line 1 who graduated in 6 years or less (include those from Lines 7 & 8)	324	38%	326	39%	280	44%	341	44%											

SOURCE: Banner by Ellucian/Student Database



UNDERGRADUATE FIRST GENERATION STUDENT RETENTION AND GRADUATION RATE

FALL 2012 – 2018

	2012 = 637		2013 = 781		2014 = 717		2015 = 844		2016 = 999		2017 = 914		2018 = 921	
RETENTION	#	%	#	%	#	%	#	%	#	%	#	%	#	%
1 Total number of new freshmen full-time and part-time (first-time-in-college)	249		221		239		285		324		328		283	
2 Average high school GPA	2.99		3.05		3.04		3.02		3.20		3.28		3.31	
3 Number of students from Line 1 returning for a 2nd year.	149	60%	151	68%	156	65%	187	66%	231	71%	216	66%		
4 Number of students from Line 1 who returned for a 3rd year	123	49%	133	60%	131	55%	149	52%	176	54%				
5 Number of students from Line 1 who returned for a 4th year	116	47%	122	55%	115	48%	135	47%						
6 Number of students from Line 1 who returned for a 5th year	28	11%	38	17%	36	5%								
7 Number of students from Line 1 who returned for a 6th year	6	2%	10	5%										

GRADUATION

8 Number of students from Line 1 who graduated in 4 years (or less)	78	31%	71	32%	55	23%								
9 Number of students from Line 1 who graduated in 5 years or less (include those from line 7)	97	39%	99	45%	84	35%								
10 Number of students from Line 1 who graduated in 6 years or less (include those from Lines 7 & 8)	102	41%	113	51%										

SOURCE: Banner by Ellucian/Student Database



GRADUATE DOCTORATE TIME TO DEGREE

FALL 2009 – 2013

	FALL 2009						TTL ENR	FALL 2010						TTL ENR	FALL 2011						TTL ENR	FALL 2012						TTL ENR	FALL 2013									
	YEARS COMPLETED							YEARS COMPLETED							YEARS COMPLETED							YEARS COMPLETED																
	1-3		4-5		6-7			1-3		4-5		6-7			1-3		4-5		6-7			1-3		4-5		6-7*			1-3		4-5		6-7*					
	#	%	#	%	#	%	#	%	#	%	#	%	#	%	#	%	#	%	#	%	#	%	#	%	#	%	#	%										
SCHOOL OF ARTS AND SCIENCES																																						
African American Studies	2						5						8	1					3	1	33%					5												
Africana Womens Studies													3	1			1	33%																				
Biology	4		3	75%	1		2		1	50%	1	50%	6		3	50%	2	33%	10		6	60%	6	60%	2													
Chemistry							8	1	13%	2	25%	3	38%						5	1	20%	1	20%															
English	1		1	100%						100%			4						3																			
History																			1																			
Political Science	4	1			1	25%	2						4	1	1	25%			4						8													
Romance Languages																			1																			
Systems Science†																			1																			
TOTAL	11	1	9%	4	36%	2	18%	17	1	6%	3	18%	4	24%	25	3	12%	4	16%	3	12%	27	2	7%	7	26%	6	22%	15									
SCHOOL OF EDUCATION																																						
Educational Leadership	8	1	13%	5	63%		8		7	88%			8	1	13%	1	13%	1	13%	7	1	14%	5	71%	1	14%	8	1	13%	3	38%							
Exceptional Student Education																																						
TOTAL	8	1	13%	5	63%		8		7	88%			8	1	13%	1	13%	1	13%	7	1	14%	5	71%	1	14%	8	1	13%	3	38%							
SCHOOL OF SOCIAL WORK																																						
SW Plan-Admin and Soc Science							10		5	50%	2	20%	6		6	100%			6	1	17%	3	50%			6		2	33%									
TOTAL							10		5	50%	2	20%	6		6	100%			6	1	17%	3	50%			6		2	33%									
GRAND TOTAL	19	2	11%	9	47%	2	11%	35	1	3%	15	43%	6	17%	39	4	10%	11	28%	4	10%	40	4	10%	15	38%	7	18%	29	1	3%	5	17%					

† Phased Out 2005-2008

SOURCE: Banner by Ellucian/Student Database

NOTE: "TTL ENR" column reflects the original headcount of students enrolled for the first time in the specified fall term (ex. Fall 2009). Each Fall term (ex. Fall 2009) column shows the number of students from the original headcount that graduated from CAU within the displayed amount of years ("YEARS COMPLETED" 1-2, 3, 4-5).

* Future Data



**UNDERGRADUATE DEGREE RECIPIENTS BY SCHOOL, CIP CODE,
MAJOR AND GENDER**

AY 2014-15 – 2018-19

CIP	SCHOOL/MAJOR	2014-15			2015-16			2016-17			2017-18			2018-19		
		M	W	TTL	M	W	TTL	M	W	TTL	M	W	TTL	M	W	TTL
ARTS & SCIENCES																
90799	Mass Media Arts	20	53	73	25	72	97	30	57	87	30	56	86	18	71	89
110101	Computer and Information Systems	5	3	8	10	4	14	1	1	2	7	1	8	10		10
110701	Computer Science	2	2	4	1	1	2	3	2	5	4	4	8	8	1	9
140101	Engineering †															0
160901	French	1		1											1	1
160905	Spanish							1								
230101	English	1	9	10	2	5	7	1	8	9	1	2	3	1	6	7
231304	Speech Communication	2	9	11		2	2		3	3		2	2		2	2
260101	Biology	6	42	48	9	41	50	6	31	37	7	28	35	4	19	23
270101	Mathematics		2	2		2	2		5	5	3	2	5		2	2
380101	Philosophy					1	1		1	1	1		1			
380201	Religion				1	1	2		1	1	1		1	2		2
400501	Chemistry		2	2		2	2	1	5	6		4	4		4	4
400801	Physics	1	1	2	2	2	4			0		1	1	2		2
420101	Psychology	9	53	62	4	45	49	6	44	50	3	47	50	5	49	54
430104	Criminal Justice	11	42	53	15	26	41	4	31	35	4	29	33	14	41	55
451001	Political Science	3	12	15	3	10	13	3	8	11	2	8	10	1	10	11
451101	Sociology	1	4	5	1	1	2	2	3	5	1	9	10	2	1	3
500407	Fashion Design and Merchandising		19	19	1	35	36	2	21	23	5	30	35	1	22	23
500505	Theatre Arts	1	7	8	2	7	9		1	1	2	3	5	1	7	8
500701	Art		3	3	2	3	5	2	4	6	2	3	5	2	1	3
500901	Music	1	3	4	3	3	6	1	1	2	1		1	2	1	3
540101	History	1	2	3		3	3		1	1				1	2	3
SCHOOL TOTAL		65	268	333	81	266	347	62	229	290	74	229	303	74	240	314
BUSINESS ADMINISTRATION																
520201	Business Administration	14	43	57	20	54	74	29	57	86	27	40	67	47	64	111
520301	Accounting	5	14	19	1	13	14	4	14	18	3	3	6	5	9	14
520601	Economics	1	1	2		1	1		2	2		1	1	1		1
SCHOOL TOTAL		20	58	78	21	68	89	33	73	106	30	44	74	53	73	126
EDUCATION																
130101	Educational Studies	2	14	16	1	2	3		5	5	3	12	15	4	9	13
131210	Early Childhood Education		3	3	1	13	14		2	2		7	7		4	4
SCHOOL TOTAL		2	17	19	2	15	17		7	7	3	19	22	4	13	17
SOCIAL WORK																
440701	Social Work	2	16	18	2	19	21	3	22	25	1	17	18	6	20	26
SCHOOL TOTAL		2	16	18	2	19	21	3	22	25	1	17	18	6	20	26
GRAND TOTAL		89	359	448	106	368	474	98	331	429	108	309	417	137	346	483

† Phased Out 2005-2008

SOURCE: Banner by Ellucian/Student Database



**ACCELERATED BACHELOR/MASTER DUAL DEGREE RECIPIENTS
BY SCHOOL, CIP CODE, MAJOR AND GENDER**

AY 2014-15 – 2018-19

CIP	SCHOOL/MAJOR	2014-15			2015-16			2016-17			2017-18			2018-19		
		M	W	TTL	M	W	TTL	M	W	TTL	M	W	TTL	M	W	TTL
<u>SCHOOL OF ARTS & SCIENCES</u>																
110701	Computer Science															
260101	Biology															
270101	Mathematics				1	1		1	1							
400501	Chemistry															
400801	Physics															
SCHOOL TOTAL					1	1		1	1							
<u>SCHOOL OF BUSINESS ADMINISTRATION</u>																
520301	Accounting	1		1							1		1			
SCHOOL TOTAL		1		1							1		1			
GRAND TOTAL		1		1		1	1		1	1	1		1			

SOURCE: Banner by Ellucian/Student Database

SPECIALIST DEGREE RECIPIENTS BY SCHOOL, CIP CODE, MAJOR AND GENDER

AY 2014-15 – 2018-19

CIP	SCHOOL/MAJOR	2014-15			2015-16			2016-17			2017-18			2018-19		
		M	W	TTL	M	W	TTL	M	W	TTL	M	W	TTL	M	W	TTL
<u>SCHOOL OF EDUCATION</u>																
130401	Educational Leadership		1	1	2		2	1		1						
SCHOOL TOTAL			1	1	2		2									
GRAND TOTAL			1	1	2		2	1		1						

SOURCE: Banner by Ellucian/Student Database



MASTER'S DEGREE RECIPIENTS BY SCHOOL, CIP CODE, MAJOR AND GENDER

AY 2014-15 – 2018-19

CIP	MAJOR	2014-15			2015-16			2016-17			2017-18			2018-19		
		M	W	TTL	M	W	TTL	M	W	TTL	M	W	TTL	M	W	TTL
ARTS & SCIENCES																
50201	African American Studies	2	3	5	2	3	5	1		1	2	2	4	1		1
50299	Africana Women's Studies		3	3		1	1		1	1		1	1		1	1
110701	Computer Science	6	2	8	9	6	15	13	7	20	11	5	16	4		4
160901	French															
230101	English				1		1	2	4	6		1	1		2	2
260101	Biology				1	4	5		2	2	1		1	1	1	2
270101	Mathematics	3	1	4	2	1	3		4	4	2	6	8		3	3
400501	Chemistry		1	1	1	5	6		3	3	1	3	4	1	5	6
400801	Physics		1	1	3	2	5	7	3	10	4	7	11	3	1	4
430104	Criminal Justice Administration	1	4	5		2	2	3	2	5		6	6	1	4	5
440401	Public Administration	4	10	14	9	9	18	10	7	17	12	9	21	5	14	19
451001	Political Science					1	1				1	2	3			
451101	Sociology				1		1		3	3	3	3	6	3	4	7
540101	History					1	1		1	1					1	
160905	Spanish															
SCHOOL TOTAL		16	25	41	29	35	64	36	37	73	37	45	82	19	36	54
BUSINESS ADMINISTRATION																
520201	Business Administration	8	7	15	12	14	26	16	15	31	7	13	20	7	9	16
520301	Accounting	6	7	13	2	4	6	2	15	17	2	2	4	2	3	5
520601	Economics		1	1		2	2					2	2			
SCHOOL TOTAL		14	15	29	14	20	34	18	30	48	9	17	26	9	12	21
EDUCATION																
130401	Educational Leadership	2	4	6	2	6	8	7	9	16	7	11	18	3	6	9
131001	Special Ed - Gen Curriculum	1	5	6		2	2		1	1	3		3	2	2	4
131101	School Counseling		5	5	2	10	12	2	9	11	5	8	13	2	5	7
131205	Secondary Education (Science or Math)										4		4	1	1	2
139999	Community Counseling		6	6	2	12	14	1	4	5	2	7	9	1	6	7
SCHOOL TOTAL		3	20	23	6	30	36	10	23	33	21	26	47	9	20	29
SOCIAL WORK																
440701	Social Work	11	119	130	20	128	148	18	71	89	11	69	80	8	58	66
SCHOOL TOTAL		11	119	130	20	128	148	18	71	89	11	69	80	8	58	66
GRAND TOTAL		44	179	223	69	213	282	82	161	243	78	157	235	45	126	171

SOURCE: Banner by Ellucian/Student Database



DOCTORAL DEGREE RECIPIENTS BY SCHOOL, CIP CODE, MAJOR AND GENDER

AY 2014-15 – 2018-19

CIP	SCHOOL/MAJOR/CONCENTRATION	2014-15			2015-16			2016-17			2017-18			2018-19		
		M	W	TTL	M	W	TTL	M	W	TTL	M	W	TTL	M	W	TTL
SCHOOL OF ARTS & SCIENCES																
50201	African-American Studies	1		1							1	2	3	1	2	3
50299	Africana Women’s Studies		1	1				1	1		1	1		1	1	
160900	Romance Languages															
230101	English							1	1						5	
260101	Biology		1	1	1	3	4	3	6	9	1	2	3	3	2	5
400501	Chemistry		1	1	3	2	5	2	2	4	1	2	3	3	1	4
451001	Political Science	1	2	3	1		1	2	2	4	2	1	3	1		1
540100	History					1	1									
SCHOOL TOTAL		2	5	7	5	6	11	8	11	19	5	8	13	8	11	19
SCHOOL OF EDUCATION																
130401	Educational Leadership	2	3	5	4	8	12	6	15	21	6	8	14	5	8	13
SCHOOL TOTAL		2	3	5	4	8	12	6	15	21	6	8	14	5	8	13
SCHOOL OF SOCIAL WORK																
440701	Social Work		9	9	1	4	5		3	3		3	3	1	4	5
SCHOOL TOTAL			9	9	1	4	5		3	3		3	3	1	4	5
GRAND TOTAL		4	17	21	10	18	28	14	29	43	11	19	30	14	23	37

† Phased Out 2005-2008

SOURCE: Banner by Ellucian/Student Database



UNDERGRADUATE AND GRADUATE CAREER PLACEMENT
OVERALL 2017 – 2018 GRADUATING CLASS

Classification	# graduates	# of survey responses	% of survey responses	% of non-survey responses	% employed	% school	% unemployed	% school/employed
Undergraduate	413	322	77.97%	22.03%	48.76%	18.32%	32.92%	67.08%
Graduate	264	170	64.39%	35.61%	57.06%	5.29%	37.65%	62.35%

Note: percentage data is based on completed survey responses

Note: military service is included in employed

SOURCE: Career and Professional Development



FACULTY / STAFF



FULL-TIME INSTRUCTIONAL FACULTY BY SCHOOL, GENDER, ETHNICITY, RANK, TENURE AND TERMINAL DEGREE

FALL 2018

SCHOOL GENDER	ETHNICITY						RANK					TENURE	TERMINAL DEGREE
	TTL	AS	BL	HS	WH	OT	PROF	ASSOC	ASST	INST	LECT		
ARTS & SCIENCES													
Men	72	11	46	1	13	1	30	29	5	2	3	56	63
Women	53	5	43	1	3	1	5	18	18	7	3	22	42
TOTAL	125	16	89	2	16	2	35	47	23	9	6	78	105
%		13%	71%	2%	13%	2%	28%	38%	18%	7%	5%	62%	84%
BUSINESS ADMINISTRATION													
Men	15	4	10		1		7	5	2	1		12	13
Women	12	1	11				1	4	5		1	5	9
TOTAL	27	5	21		1		8	9	7	1	1	17	22
%		19%	78%		4%		30%	33%	26%	4%	4%	63%	81%
EDUCATION													
Men	4		4				2		2			2	4
Women	9		9				3	2	2			4	8
TOTAL	13		13				5	2	4			6	12
%			100%				38%	15%	31%			46%	92%
SOCIAL WORK													
Men	7	1	6					3	3		1	3	5
Women	10		9		1			1	3		5	1	7
TOTAL	17	1	15		1			4	6		6	4	12
%		6%	88%		6%			24%	35%		35%	24%	71%
GRAND TOTAL													
Men	98	16	66	1	14	1	39	37	12	3	4	73	85
Women	84	6	72	1	4	1	9	25	28	7	9	32	66
TTL	182	22	138	2	18	2	48	62	40	10	13	105	151
TTL %		12%	76%	1%	10%	1%	26%	34%	22%	5%	7%	58%	83%

NOTE: AI = American Indian/Alaskan Native AS = Asian BL = Black/African American HS = Hispanic WH = White OT=Other

SOURCE: Banner by Ellucian/HR Database



**PART-TIME INSTRUCTIONAL FACULTY BY SCHOOL, GENDER,
ETHNICITY AND TERMINAL DEGREE**

FALL 2018

SCHOOL	ETHNICITY						
GENDER	TOTAL	AI	AS	BL	HI	WH	OTH
<u>ARTS & SCIENCES</u>							
Men	42	1	2	32	2	2	3
Women	51			46		5	
TOTAL	93			78	2	7	3
%				84%	2%	8%	3%
<u>BUSINESS ADMINISTRATION</u>							
Men	6			6			
Women	2			2			
TOTAL	8			8			
%				100%			
<u>EDUCATION</u>							
Men	5			4		1	
Women	4			4			
TOTAL	9			8			
%				89%			
<u>SOCIAL WORK</u>							
Men	1			1			
Women	3			3			
TOTAL	4			4			
%				100%			
<u>GRAND TOTAL</u>							
Men	54	1	2	43	2	3	3
Women	60			55		5	
TOTAL	114	1	2	98	2	8	3
%		1%	2%	86%	2%	7%	3%

NOTE: AI = American Indian/Alaskan Native AS = Asian BL = Black/African American WH = White
HI = Hispanic OTH=Other

SOURCE: Banner by Ellucian/HR Database



FULL-TIME INSTRUCTIONAL FACULTY PROFILE

FALL 2014 – 2018

CATEGORY	2014		2015		2016		2017		2018	
<u>SCHOOL</u>										
Arts & Sciences	118	69%	117	68%	119	68%	121	68%	125	69%
Business Administration	27	16%	27	16%	27	15%	27	15%	27	15%
Education	14	8%	15	9%	13	7%	13	7%	13	7%
Social Work	12	7%	14	8%	17	10%	18	10%	17	9%
TOTAL	171	100%	173	100%	176	100%	179	100%	182	100%
<u>RANK</u>										
Professor	41	24%	42	24%	43	24%	48	27%	48	26%
Associate Professor	60	35%	67	39%	65	37%	62	35%	62	34%
Assistant Professor	48	28%	46	27%	50	28%	46	26%	40	22%
Instructor	15	9%	10	6%	5	3%	5	3%	10	5%
Lecturer	7	4%	8	5%	13	7%	13	7%	13	7%
No Rank							5	3%	9	5%
TOTAL	171	100%	173	100%	176	100%	179	100%	182	100%
<u>DEGREE</u>										
Doctoral	134	78%	144	83%	143	81%	145	81%	145	80%
Master's	37	22%	29	17%	33	19%	34	19%	37	20%
TOTAL	171	100%	173	100%	176	100%	179	100%	182	100%
<u>TENURE</u>										
Tenure	115	67%	125	72%	114	65%	105	59%	105	58%
On-Track	18	11%	23	13%	22	13%	46	26%	42	23%
Non-Tenure Track	38	22%	25	14%	40	23%	28	16%	35	19%
TOTAL	171	100%	173	100%	176	100%	179	100%	182	100%
<u>GENDER</u>										
Men	102	60%	101	58%	100	57%	98	55%	98	54%
Women	69	40%	72	42%	76	43%	81	45%	84	46%
TOTAL	171	100%	173	100%	176	100%	179	100%	182	100%
<u>ETHNICITY</u>										
Nonresident Alien	10	6%	8	5%	6	3%	6	3%	5	3%
American Indian/Alaskan Native										
Asian or Pacific Islander	19	11%	22	13%	21	12%	20	11%	20	11%
Black or African American	125	73%	121	70%	129	73%	132	74%	135	74%
Hispanic	1	1%	3	2%	3	2%	3	2%	2	1%
White/Non-Hispanic	14	8%	17	10%	15	9%	16	9%	18	10%
Other/Unknown	2	1%	2	1%	2	1%	2	1%	2	1%
TOTAL	171	100%	173	100%	176	100%	179	100%	182	100%

SOURCE: Banner by ElLucian/Human Resources Database



**TOTAL NUMBER OF FACULTY BY SCHOOL, DIVISION, DEPARTMENT,
EMPLOYMENT STATUS, GENDER AND ETHNICITY**

FALL 2014 – 2018

SCHOOL OF ARTS & SCIENCES

Division, Department, FT/PT, Gender/Race		2014				2015				2016				2017				2018			
		BL	WH	OTH	TTL	BL	WH	OTH	TTL	BL	WH	OTH	TTL	BL	WH	OTH	TTL	BL	WH	OTH	TTL
Division of Communication Arts																					
Mass Media Arts	M	6			6	5			5	3			3	3			3	5			5
	W	5	1		6	5	1		6	5	1		6	5	1		6	4	1		5
	TTL	11	1		12	10	1		11	8	1		9	8	1		9	9	1		10
	M	4			4	4			4	3			3	7			7	6			8
	W	1			1				1				1	4			4	4			4
	TTL	5			5	4			4	4			4	11			11	10			12
TOTAL	16	1		17	14	1		15	12	1		13	19	1		20	19			3	22
Speech Communication and Theater Arts	M	3			3	2			2	3			3	2			2	2			2
	W		1		1		1		1		1		2		1		3	2		1	3
	TTL	3	1		4	2	1		3	3	1		4	4	1		5	4		1	5
	M	3			3	4			4	2			2	3			3	3			3
	W	5			5	3			3	4			4	2			2	1			1
	TTL	8			8	7			7	6			6	5			5	4			4
TOTAL	11	1		12	9	1		10	9	1		10	9	1		10	8			1	9
Division of Humanities																					
African American & Africana Women's Studies *	M	1			1	1	1		2	1	1		2	1	2		3	1	2		3
	W					1			1	1			1	3	1		4	3	1		4
	TTL	1			1	2	1		3	2	1		3	4	3		7	4	3		7
	M	1	1		2	3			3	3			3	3	1		4	3	1		4
	W	3			3	4	1		5		1		1	3	1		4	5	1		6
	TTL	4	1		5	7	1		8	3	1		4	6	2		8	8	2		10
TOTAL	5	1		6	9	2		11	5	2		7	10	5		15	12	5		17	
History *	M		1		1		1		1		1										
	W	3	1		4	2	1		3	3	1		4								
	TTL	3	2		5	2	2		4	3	2		5								
	M						1		1		1		1								
	W	4			4	2			2	2			2								
	TTL	4			4	2	1		3	2	1		3								
TOTAL	7	2		9	4	3		7	5	3		8									
Art	M		1		1		1		1		1			1		1		1		1	
	W	3	1	1	4	4	1	1	5	3	1	1	4	3	1	1	4	3	1	1	4
	TTL	3	1	1	5	4	1	1	6	3	1	1	5	3	1	1	5	3	1	1	5
	M		1		1						1		1								
	W	1			1	2			2	3	1		4	3	1		4	6	1		7
	TTL	1	1		2	2			2	3	2		5	3	1		4	6	1		7
TOTAL	4	2	1	7	6	1	1	8	6	3	1	10	6	2	1	9	9	2	1	12	
English	M	4	1		5	3	1		4	3	1		4	3	1		4	3	1		4
	W	3	1	1	5	3	1	1	5	4	1	1	5	4	1	1	5	5	5		5
	TTL	7	2	1	10	6	2	1	9	7	1	1	9	7	1	1	9	8	1		9
	M	5			5	4			4	3			3	4			5	4			5
	W	5			5	10			10	13	1		14	10	1		11	12	2		14
	TTL	10			10	14			14	16	1		17	14	1	1	16	16	2	1	19
TOTAL	17	2	1	20	20	2	1	23	23	2	1	26	21	2	2	25	24	3	1	28	
Foreign Languages	M	1		1	2	1		2	3	2		2	4	2		2	4	2	1	1	4
	W	2			2	1		1	2	1		1	2	1		1	2	1		1	2
	TTL	3		1	4	2		3	5	3		3	6	3		3	6	3	1	2	6
	M		1		1		1		1												
	W	3		1	4	3		1	4	1			1								
	TTL	3	1	1	5	3	1	1	5	1			1								
TOTAL	6	1	2	9	5	1	4	10	4	0	3	7	3	3	6	3	3	1	2	6	
Music	M	5	1		6	5	1		6	5	1		6	5	1		6	5	1		6
	W	1	1		2	1	1		2		1		2	1	1		2	1	1		2
	TTL	6	2		8	6	2		8	5	2		7	6	2		8	6	2		8
	M					1			1	1			1				1	3			3
	W	2		1	3	2			2	4	1		5	4			4	3			3
	TTL	2		1	3	3			3	5	1		6	4	1		5	6			6
TOTAL	8	2	1	11	9	2		11	10	3		13	10	3		13	12	2		14	

NOTE: BL = Black/African American WH = White OTH = Other

* African American Studies, Africana Women's Studies & History combined as one Department, Fall 2012

SOURCE: Banner by Ellucian/HR Database



TOTAL NUMBER OF FACULTY BY SCHOOL, DIVISION, DEPARTMENT, EMPLOYMENT STATUS, GENDER AND ETHNICITY (CONT'D)

FALL 2014 – 2018

SCHOOL OF ARTS & SCIENCES

Division, Department, FT/PT, Gender/Race		2014				2015				2016				2017				2018				
		BL	WH	OTH	TTL	BL	WH	OTH	TTL	BL	WH	OTH	TTL	BL	WH	OTH	TTL	BL	WH	OTH	TTL	
Division of Humanities																						
Religion & Philosophy	FT	M	2	1	1	4	2	1	1	4	2	1	1	4	2	1	1	4	2	1	1	4
		W																				
		TTL	2	1	1	4	2	1	1	4	2	1	1	4	2	1	1	4	2	1	1	4
	PT	M	1			1																
		W					1			1	1			1	1			1	1			1
		TTL	1			1	1			1	1			1	1			1	1			1
TOTAL		3	1	1	5	3	1	1	5	3	1	1	5	3	1	1	5	3	1	1	5	
Division of Natural Sciences and Mathematics																						
Biology	FT	M	5	1	3	9	4	2	2	8	5	2	1	8	5	2	1	8	4	2	1	7
		W	6			6	5			5	5		1	6	6		1	7	6	1	1	8
		TTL	11	1	3	15	9	2	2	13	10	2	2	14	11	2	2	15	10	3	2	15
	PT	M									3		4									3
		W	1			1		2	1	3	4	1		5	4	1		5	5			5
		TTL	1			1		2	1	3	7	1	4	12	4	1		5	5			8
TOTAL		12	1	3	16	9	4	3	16	17	3	6	26	15	3	2	20	15	3	5	23	
Chemistry	FT	M	5	1	3	9	5	1	3	9	6	1	3	10	6	1	3	10	5	1	3	9
		W																				
		TTL	5	1	3	9	5	1	3	9	6	1	3	10	6	1	3	10	5	1	3	9
	PT	M	1		1	2	1	1		2												
		W			1	1				1										1		
		TTL	1		2	3	2	1		3										1		
TOTAL		6	1	5	12	7	2	3	12	6	1	3	10	6	1	3	10	6	1	3	10	
Computer and Information Sciences	FT	M	1	2	2	5	2	2	2	6	1	2	2	5	1	2	2	5	1	2	2	5
		W	1			1	1			1	1			1	2			2	2			2
		TTL	2	2	2	6	3	2	2	7	2	2	2	6	3	2	2	7	3	2	2	7
	PT	M									1			1	1			1	1			1
		W							1	1					1			1				1
		TTL							1	1	1			1	2			2	1			1
TOTAL		2	2	2	6	3	2	3	8	3	2	2	7	5	2	2	9	4	2	2	8	
Mathematical Sciences	FT	M	2		1	3	2		1	3	2		1	3	2		1	3	2		2	4
		W	3		1	4	3		1	4	3		1	4	3		1	4	3		1	4
		TTL	5		2	7	5		2	7	5		2	7	5		2	7	5		3	8
	PT	M	8			8	8			8	6			6	6	1		7	6		1	7
		W	2			2	2			2	1			1	2			2	5			5
		TTL	10			10	10			10	7			7	8	1		9	11		1	12
TOTAL		15		2	17	15		2	17	12		2	14	13	1	2	16	16		4	20	
Physics	FT	M	3	1	3	7	3	1	3	7	3		3	6	3		3	6	3		3	6
		W																				
		TTL	3	1	3	7	3	1	3	7	3		3	6	3		3	6	3		3	6
	PT	M		2		2		2		2		1		1								
		W																				
		TTL		2		2		2		2		1		1								
TOTAL		3	3	3	9	3	3	3	9	3	1	3	7	3	3	6	3	3	3	6	6	

NOTE: BL = Black/African American WH = White OTH = Other

SOURCE: Banner by Ellucian/HR Database



TOTAL NUMBER OF FACULTY BY SCHOOL, DIVISION, DEPARTMENT, EMPLOYMENT STATUS, GENDER AND ETHNICITY (CONT'D)

FALL 2013 – 2016

SCHOOL OF ARTS & SCIENCES

Division, Department, FT/PT, Gender/Race		2014				2015				2016				2017				2018				
		BL	WH	OTH	TTL	BL	WH	OTH	TTL	BL	WH	OTH	TTL	BL	WH	OTH	TTL	BL	WH	OTH	TTL	
Division of Social Sciences																						
Political Science	FT	M	5			5	5			5	5			5	3			3	4			4
		W					1			1	1			1	2			2	2			2
		TTL	5			5	6			6	6			6	5			5	6			6
	PT	M	3			3	3			3	6			6	7			7	2			2
		W	1			1	1			1	1			1	2			2	2			2
		TTL	4			4	4			4	7			7	9			9	4			4
TOTAL		9			9	10			10	13			13	14			14	10			10	
Psychology	FT	M	2	1		3	1	1		2	2	1		3	3	1		4	3	1		4
		W	3		1	4	3		1	4	3		1	4	3		1	4	4		1	5
		TTL	5	1	1	7	4	1	1	6	5	1	1	7	6	1	1	8	7	1	1	9
	PT	M	1			1	1			1	1			1	1			1				
		W	1			1	1			1				2				2	1			1
		TTL	2			2	2			2	1			1	3			3	1			1
TOTAL		7	1	1	9	6	1	1	8	6	1	1	8	9	1	1	11	8	1	1	10	
Public Administration	FT	M	2			2	2			2	2			2	2			2	2			2
		W	2			2	2			2	3			3	3			3	3			3
		TTL	4			4	4			4	5			5	5			5	5			5
	PT	M																				
		W																				
		TTL																				
TOTAL		4			4	4			4	5			5	5			5	5			5	
Sociology & Criminal Justice	FT	M	2			2	2			2	2			2	1			1	2			2
		W	3			3	3			3	4			4	4			4	4			4
		TTL	5			5	5			5	6			6	5			5	6			6
	PT	M	3		1	4	4			4	3			3	4		1	5	4	1	1	6
		W	1	1		2		1		1				1	1			1		1		1
		TTL	4	1	1	6	4	1		5	3			3	5		1	6	4	2	1	7
TOTAL		9	1	1	11	9	1		10	9			9	10		1	11	10	2	1	13	
School of Arts & Sciences Total	FT	M	49	11	14	74	45	13	14	72	47	12	13	72	44	12	13	69	46	13	13	72
		W	35	3	6	44	35	3	7	45	37	2	8	47	42	2	8	52	43	3	7	53
		TTL	84	14	20	118	80	16	21	117	84	14	21	119	86	14	21	121	89	16	20	125
	PT	M	30	5	2	37	33	5		38	33	3	4	40	36	3	2	41	32	2	8	42
		W	30	1	3	34	32	4	3	39	36	5		41	39	4		43	46	5		51
		TTL	60	6	5	71	65	9	3	77	69	8	4	81	75	7	2	84	78	7	8	93
TOTAL		144	20	25	189	145	25	24	194	153	22	25	200	161	21	23	205	167	23	28	218	

NOTE: BL = Black/African American WH = White Oth = Other

SOURCE: Banner by Ellucian/HR Database



**TOTAL NUMBER OF FACULTY BY SCHOOL, DIVISION, DEPARTMENT,
EMPLOYMENT STATUS, GENDER AND ETHNICITY (CONT'D)**

FALL 2014 – 2018

SCHOOL OF BUSINESS ADMINISTRATION

Division, Department, FT/PT, Gender/Race		2014				2015				2016				2017				2018					
		BL	WH	OTH	TTL	BL	WH	OTH	TTL	BL	WH	OTH	TTL	BL	WH	OTH	TTL	BL	WH	OTH	TTL		
Accounting	M				1			1	1			1			1			1			1		
	FT																						
	W	2		2	4	1		2	3	3		2	5	3		1	4	3		1	4		
	TTL	2		2	4	1	1	2	4	3	1	2	6	3	1	1	5	3	1	1	5		
	PT																						
	W																				1	1	
TTL																				1	1		
TOTAL	2		2	4	1	1	2	4	3	1	2	6	3	1	1	5	4	1	1	6			
Business Administration - Finance	M	2			2	2			2	2			2	1			1	1			1		
	FT																						
	W	1			1	1			1	2			2	2			2	2			2		
	TTL	3			3	3			3	4			4	3			3	3			3		
	PT																						
	W													1			1	1			1		
TTL													1			1	2			2			
TOTAL	3			3	3			3	4			4	4			4	5			5			
Business Administration - Management	M	2			2	2			2	1			2	2			2	2			2		
	FT																						
	W	3			3	3			3	3			3	3			3	4			4		
	TTL	5			5	5			5	4			4	5			5	6			6		
	PT																						
	W	1			1	1			1	2			2	2			2	4			4		
TTL	1			1	1			1	2			2	2			2	4			4			
TOTAL	6			6	6			6	6			6	7			7	10			10			
Business Administration - Marketing	M	5			5	4			4	4			4	3			3	3			3		
	FT																						
	W	2			2	2			2	1			2	2			2	1			1		
	TTL	7			7	6			6	5			5	5			5	4			4		
	PT																						
	W																						
TTL																							
TOTAL	7			7	6			6	5			5	5			5	4			4			
Business Administration - Decision Science / Supply Chain Mgmt	M	1	3		4	1			3	4			1	3	4		2	3			5		
	FT																						
	W	1			1	2			2	1			1	1			1	1			1		
	TTL	2			3	3			3	2			3	3			3	3			3		
	PT																						
	W									1													
TTL									1														
TOTAL	2	3		5	3			3	6	3			3	3		6	3	3		6			
Economics	M	2	1		3	2			1	3			2	1			3	2			3		
	FT																						
	W																						
	TTL	2			1	3	2			1	3			2	1			3	2			3	
	PT																						
	W																				1	1	
TTL																				1	1		
TOTAL	2	1		3	2			3	2	1	3		2	1		3	3			1	4		
School of Business Administration Total	M	12	4		16	11	1		4	16	10	1	4	15	10	1	4	15	10	1	4	15	
	FT																						
	W	9	2		11	9			2	11	10		2	12	11		1	12	11		1	12	
	TTL	21			6	27	20	1		6	27	20	1	6	27	21	1	5	27	21	1	5	27
	PT																						
	W	1				1				1	2			2	3			3	2			2	
TTL	1				1				1	3			3	3			3	8			8		
TOTAL	22		6	28	21	1		6	28	23	1	6	30	24	1	5	30	29	1	5	35		

NOTE: BL = Black/African American WH = White Oth = Other

SOURCE: Banner by Ellucian/HR Database



**TOTAL NUMBER OF FACULTY BY SCHOOL, DIVISION, DEPARTMENT,
EMPLOYMENT STATUS, GENDER AND ETHNICITY (CONT'D)**

FALL 2014 – 2018

SCHOOL OF EDUCATION

Division, Department, FT/PT, Gender/Race		2014				2015				2016				2017				2018				
		BL	WH	OTH	TTL	BL	WH	OTH	TTL	BL	WH	OTH	TTL	BL	WH	OTH	TTL	BL	WH	OTH	TTL	
Counselor Education	M	2			2	2			2	2			2	2			2	1			1	
	W	2			2	2			2	2			2	2			2	3			3	
	TTL	4			4	4			4	4			4	4			4	4			4	
	M					2				1				1				1	1			1
	W	3			3	3			3	1			1	2			2	3			3	
	TTL	3			3	5			5	2			2	3			3	4			4	
TOTAL	7			7	9			9	6			6	7			7	8			8		
Curriculum & Instruction **	M	2			2	2			2	1			1	1			1	1			1	
	W	4			4	4			4	3			3	4			4	4			4	
	TTL	6			6	6			6	4			4	5			5	5			5	
	M	4			4	3			3	2			2	4			4	2	1		3	
	W	4		1	5	2			2	3			3	2			2	1			1	
	TTL	8		1	9	5			5	5			5	6			6	3	1		4	
TOTAL	14		1	15	11			11	9			9	11			11	8	1		9		
Educational Leadership	M	2			2	3			3	3			3	2			2	2			2	
	W	2			2	2			2	2			2	1			1	2			2	
	TTL	4			4	5			5	5			5	3			3	4			4	
	M	1			1	1			1	1			1	2			2	1			1	
	W	5			5	5			5	5			5	1			1	3			3	
	TTL	6			6	6			6	6			6	3			3	1			1	
TOTAL	10			10	11			11	11			11	6			6	5			5		
School of Education Total	M	6			6	7			7	6			6	5	1		6	4			4	
	W	8			8	8			8	7			7	7			7	9			9	
	TTL	14			14	15			15	13			13	12	1		13	13			13	
	M	5			5	6			6	4			4	7			7	4	1		5	
	W	12		1	13	10			10	9			9	5			5	4			4	
	TTL	17		1	18	16			16	13			13	12			12	8	1		9	
TOTAL	31		1	32	31			31	26			26	24	1		25	21	2		22		

SCHOOL OF SOCIAL WORK

Division, Department, FT/PT, Gender/Race		2014				2015				2016				2017				2018			
		BL	WH	OTH	TTL	BL	WH	OTH	TTL	BL	WH	OTH	TTL	BL	WH	OTH	TTL	BL	WH	OTH	TTL
Social Work	M	4		2	6	4		2	6	5		2	7	6		2	8	6		1	7
	W	5	1		6	6	1	1	8	9	1		10	9	1		10	9	1		10
	TTL	9	1	2	12	10	1	3	14	14	1	2	17	15	1	2	18	15	1	1	17
	M	3		1	4	5		2	7	1			1					1			1
	W	17			17	18			18	2			2	3			3	3			3
	TTL	20		1	21	23		2	25	3			3	3			3	4			4
TOTAL	29	1	3	33	33	1	5	39	17	1	2	20	18	1	2	21	19	1	1	21	

NOTE: BL = Black/African American WH = White OTH = Other

** Curriculum Dept. renamed, Fall 2012

SOURCE: Banner by Ellucian/HR Database



INSTRUCTIONAL FACULTY BY EMPLOYMENT STATUS, GENDER, AND RACE/ETHNICITY

FALL 2014 – 2018

EMPLOYMENT STATUS RACE/ETHNICITY & GENDER	2014				2015				2016				2017				2018													
	FT		PT		FT		PT		FT		PT		FT		PT		FT		PT											
	M	W	M	W	TTL	%	M	W	M	W	TTL	%	M	W	M	W	TTL	%	M	W	M	W	TTL	%						
Nonresident Alien	7	3	2		12	4%	7	1			8	3%	5	1	3		9	3%	5	1		1	7	2%	4	1	1		6	2%
American Indian or Alaska Native				1	1	0%						0%						0%					1		1		1	0%		
Asian	15	4	1	1	21	7%	15	7		2	24	8%	14	7	1		22	8%	14	6			20	7%	15	5	1		21	7%
Black or African American	68	57	36	60	221	78%	63	58	44	61	226	77%	66	63	39	49	217	79%	63	69	43	49	224	80%	63	72	43	55	233	79%
Hispanic/Latino	1				1	0%	2	1			3	1%	2	1			3	1%	2	1			3	1%	1	1	2		4	1%
White	10	4	5	1	20	7%	13	4	5	4	26	9%	12	3	3	5	23	8%	13	3	3	4	23	8%	14	4	3	5	26	9%
Other/Unknown	1	1	2	2	6	2%	1	1	2	1	5	2%	1	1			2	1%	1	1	2		4	1%	1	1	3		5	2%
TOTAL	102	69	46	65	282	100%	101	72	51	68	292	100%	100	76	46	54	276	100%	98	81	48	54	281	100%	98	84	54	60	296	100%
GRAND TOTAL	173	120	293	171	111	282	176	100	276	179	102	281	182	114	296															
%	59%	41%	100%	61%	39%	100%	64%	36%	100%	64%	36%	100%	61%	39%	100%															

SOURCE: Banner by Ellucian/HR Database



TOTAL EMPLOYEES BY EMPLOYMENT STATUS AND FTE*

FALL 2014 – 2018

INSTRUCTIONAL FACULTY STATUS	2014		2015		2016		2017		2018	
	#	%	#	%	#	%	#	%	#	%
Full-time	171	61%	173	59%	176	64%	179	64%	182	61%
Part-time	111	39%	119	41%	100	36%	102	36%	114	39%
TOTAL	282		292		276		281		296	
Full-time Equivalent (FTE)*	208		213		209		213		220	
NON INSTRUCTIONAL STAFF STATUS										
Full-time	353	90%	356	91%	349	90%	345	93%	359	90%
Part-time	41	10%	35	9%	37	10%	27	7%	39	10%
TOTAL	394		391		386		372		398	
Full-time Equivalent (FTE)*	374		374		368		359		379	

*Faculty FTE = total part-time/3 + total full-time, Staff FTE = total part-time/2 + total full-time

SOURCE: Banner by Ellucian/HR Database



FACULTY-STUDENT AND STAFF-STUDENT RATIO BY FULL-TIME EQUIVALENT (FTE)*
FALL 2014 – 2018

FACULTY/STUDENT RATIO	2014	2015	2016	2017	2018
FTE Faculty	208	213	209	213	220
FTE Student	3314	3489	3719	3821	3761
FTE Ratio	1:16	1:16	1:18	1:18	1:17

STAFF/STUDENT RATIO	2014	2015	2016	2017	2018
FTE Staff	374	374	368	359	379
FTE Student	3314	3489	3719	3821	3761
FTE Ratio	1:9	1:9	1:10	1:11	1:10

*Faculty FTE = total part-time/3 + total full-time, Staff FTE = total part-time/2 + total full-time

SOURCE: Banner by Ellucian/HR Database



FINANCIALS



AWARDED STUDENT AID BY FUNDING SOURCE

FALL 2018

SOURCE	Undergraduate		Graduate	
	Number of Awards	Amount of Awards	Number of Awards	Amount of Awards
Federal*	3012	\$37,435,890	489	\$5,621,255
State	610	\$1,317,188	0	\$0
Institutional	1321	\$6,235,022	226	\$920,521
Other**	795	\$3,283,932	83	\$299,732
Total Awards	5,738	\$48,272,031	798.00	\$6,841,508

* Includes grants/scholarships, loans, and work-study

** Outside/private grants, scholarships and loans

SOURCE: Banner by Ellucian/Financial Aid Database



REVENUES FY 2017-18

SOURCE	TTL AMT	%
Tuition & Fees	70,050,269	58%
Government Grants	15,129,972	12%
Private Gifts & Grants	8,754,385	7%
Investment Income	914,906	1%
Auxiliary Enterprises	14,991,874	12%
Net Realized & Unrealized gain/loss on investments	4,275,359	4%
Other Revenue	7,503,606	6%
Gain on extinguishment of debt		0%
TOTAL REVENUES AND OTHER SUPPORT	121,620,371	100%

SOURCE: Annual Financial Reports of Independent Auditors

EXPENDITURES FY 2017-18

EXPENSES	TTL AMT	%
Instruction	29,808,870	30%
Research	7,518,859	8%
Public Service	1,959,436	2%
Academic Support	8,690,392	9%
Student Services	9,681,211	10%
Student Aid		0%
Auxiliary Enterprises	15,080,415	15%
Institutional Support	25,542,699	26%
Operation and Plant Maintenance		
TOTAL EDUCATION AND GENERAL	98,281,882	100%
Interest & Financial Expense		
Gain/Loss on disposal of fixed assets		
TOTAL EXPENSES	98,281,882	100%

SOURCE: Annual Financial Reports of Independent Auditors



UNDERGRADUATE STUDENT COSTS PER ACADEMIC YEAR

AY 2014-15 – 2018-19

EXPENSE	2014-15	2015-16	2016-17	2017-18	2018-19
Tuition & Fees	\$ 21,334	\$ 21,945	\$ 22,396	\$ 23,082	\$ 23,436
Room & Board	\$ 10,434	\$ 10,478	\$ 10,800	\$ 10,878	\$ 11,156
TOTAL	\$ 31,768	\$ 32,423	\$ 33,196	\$ 33,960	\$ 34,592

SOURCE: Office of Student Accounts

UNDERGRADUATE ON-CAMPUS STUDENT COST OF ATTENDANCE PER ACADEMIC YEAR

AY 2014-15 – 2018-19

AVERAGE ON-CAMPUS STUDENT EXPENSE	2014-15	2015-16	2016-17	2017-18	2018-19
Full-time Tuition (12-18 credit hours)	\$ 19,682	\$ 19,880	\$ 19,880	\$ 20,476	\$ 20,680
Required Fees*	\$ 1,652	\$ 2,065	\$ 2,516	\$ 2,606	\$ 2,756
Room (Double Occupancy)	\$ 5,372	\$ 5,396	\$ 5,396	\$ 5,400	\$ 5,508
Board (Maximum Charge)	\$ 3,634	\$ 3,678	\$ 3,860	\$ 3,938	\$ 4,016
Books & Supplies	\$ 2,000	\$ 1,500	\$ 1,500	\$ 1,500	\$ 1,500
Other Misc Expenses	\$ 3,465	\$ 3,065	\$ 3,065	\$ 3,112	\$ 3,312
TOTAL	\$ 35,805	\$ 35,584	\$ 36,217	\$ 37,032	\$ 37,772

*Requested fees for AY 2017-18 includes \$1,190 Student Health Insurance Fees. NOTE: Undergraduate Students with the exception of International Students, Student Athletes, and campus Graduate Students may opt out of health insurance with proper proof of coverage.

SOURCE: Ellucian by Banner



LIBRARY LEARNING RESOURCES



Robert W. WOODRUFF LIBRARY

Atlanta University Center

Clark Atlanta University • Interdenominational Theological Center • Morehouse College • Spelman College

Library Collection of Resources

AY 2014-15 – 2018-19

	Collection	2014-15	2015-16	2016-17	2017-18	2018-19
1	Bound Volumes	364,010	364,148	352,310	353,574	348,386
2	Bound Periodicals and Newspapers	6,858	6,590	4,218	4,218	4,211
3	Print Journal Subscriptions	1,019	1,015	987	937	929
4	Electronic Journal Subscriptions	2,983	2,989	2,989	2,997	3,001
5	Full-Text E-Journals Access Through Aggregator Databases	89,262	107,904	119,157	145,246	155,193
6	Microforms (Units)	841,341	841,341	841,341	841,341	841,341
7	Government Documents	102,545	104,047	114,620	12,227	120,486
8	Theses and Dissertations	17,804	17,884	17,933	17,963	18,015
9	Compact Discs	2,108	2,114	2,116	2,117	2,117
10	Databases	302	312	317	344	360
11	Cubic Feet of Archival Collections	7,995	8,000	8,005	8,214	8,356
12	E-Books	82,075	86,605	92,545	99,538	106,371
13	Audio Visual Material	6,169	6,257	6,309	6,360	6,379
a	Videos	3,965	3,965	3,965	3,965	3,965
b	DVD's	2,204	2,292	2,344	2,395	2,414

Building Established	1982
Seating Capacity	1200
Square Footage (total)	220,000 sq ft
Employees	89
Exhibition Hall Capacity	500
Group Study Rooms	14
Public Access Workstations	230 PCs and iMacs
Smart Classrooms & Learning Labs	8
Electronic Information Services/Resources, On-line Databases included in table above	

SOURCE: Robert W. Woodruff Library

Clark Atlanta University is a partner institution of the Robert W. Woodruff Library constructed in 1982. The Woodruff Library is designed to serve the instructional, informational and research needs of member institutions in the **Atlanta University Center Consortium (AUCC)**, the only Historically Black Consortium of private colleges and universities in the nation. Located in walking proximity of the campus, the Library provides all academic resources to support students and faculty engaged in teaching and learning.

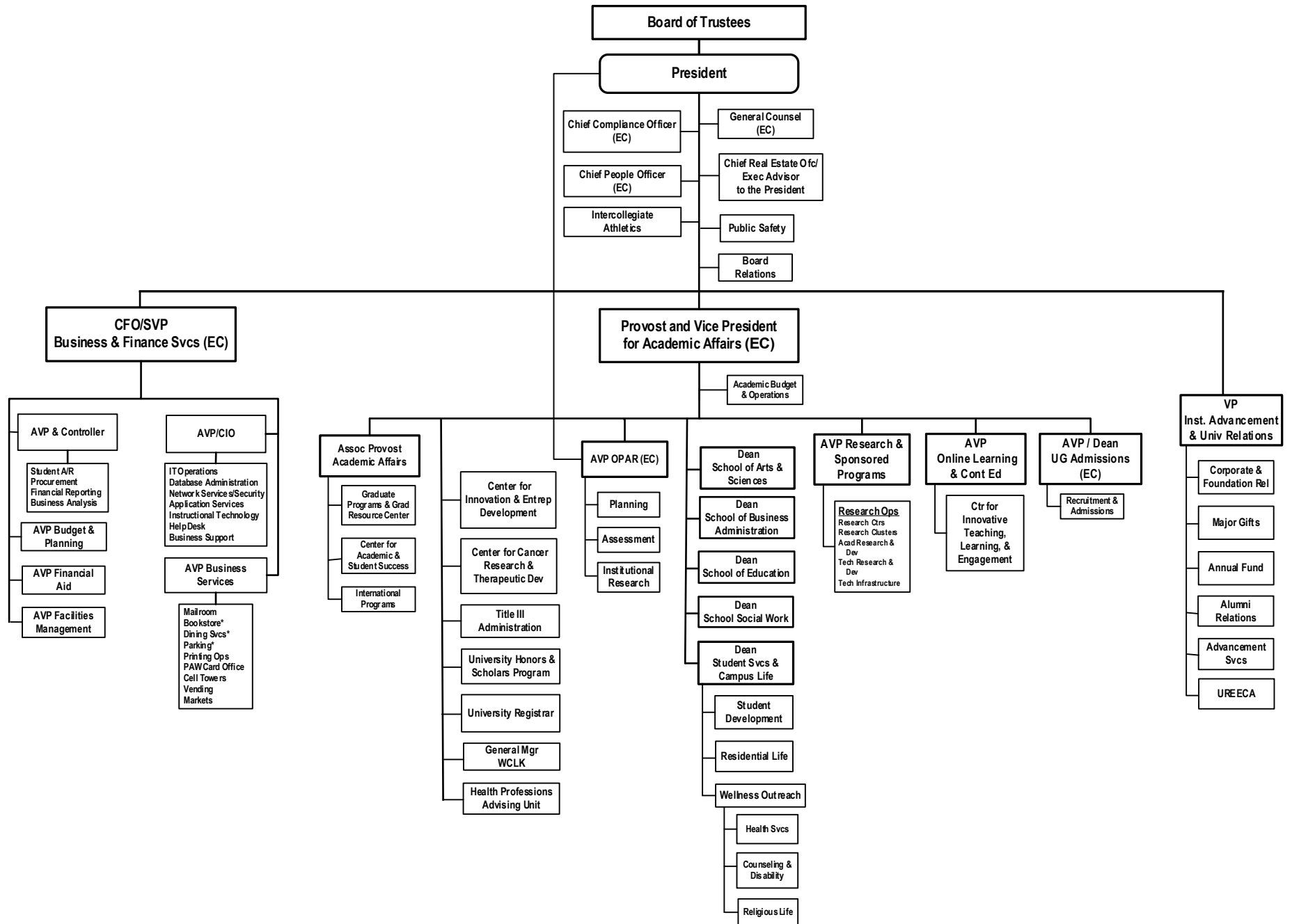
Clark Atlanta

U N I V E R S I T Y



ADMINISTRATION

2018-2019 ORGANIZATIONAL STRUCTURE OF CLARK ATLANTA UNIVERSITY



KEY
 EC= Executive Cabinet
 * = Contracted Services



BOARD OF TRUSTEES

2017-2018

CHAIR

Mr. Gregory B. Morrison

SECRETARY

Dr. Delores P. Aldridge

VICE-CHAIR

Mr. Leonard Walker

TRUSTEES

Mr. Calvin Briggs

Mr. Pedro Cherry

Mr. James H. Colon

Ms. Carla Cooper

Mr. Alexander B. Cummings, Jr.

Mr. Salvador Diaz-Verson, Jr.

Mr. Thomas W. Dortch, Jr.

Mr. Ernest G. Green

Ms. Sue Hauptert-Johnson

Mr. Richard L. Holmes

R. William Ide, III, Esq.

Mr. Tharon L. Johnson

Ms. Ingrid Saunders Jones

Mr. Joel Katz

Rev. Dr. Bernice Kirkland

Mrs. Wendy Lewis

Mr. Michael E. Melton

Mrs. Stephanie Russell

Mrs. Bobby Kennedy Sanford

Mr. William E. Shack, Jr.

Mr. Isaac J. Snype, Jr.

Errol B. Taylor, Esq.

Dr. Alvin Trotter

Ms. Brenda Walker

Mr. Leonard Walker

Mr. Derrick M. Williams

Ms. Carolyn Young

TRUSTEES EMERITUS

Juanita P. Baranco, J.D.

Dr. Harold E. Doley, Jr.

Elridge W. McMillan, Ph.D.

Mrs. Lisa Borders

Mr. Sidney Topol

Mr. Carl Ware

STUDENT DELEGATES TO THE BOARD OF TRUSTEES

Elisha Harris, Undergraduate SGA President

Amanda-Louise Poole, Graduate SGA President

EX-OFFICIO

Lucille H. Maugé

Interim President

SOURCE: Office of Board Relations



EXECUTIVE CABINET

2017-2018

Interim President	Lucille H. Maugé*
Interim Provost/Vice President for Academic Affairs	Dr. Dorcas Bowles**
Chief Financial Officer & Senior Vice President for Business and Financial Services	Dr. Lanze Thompson***
Vice President for Institutional Advancement and University Relations	Sam Burston
Associate Vice President Enrollment Services	Dr. Michael Marshall ^
Chief People Officer	Debra Hoyt
General Counsel	Lance Dunnings, Esq.
Chief Compliance Officer	Robert Clark
Chief Real Estate and Business Services Officer	Marilynn A. Davis

* Appointed Fall 2018

** Appointed, Spring 2019

***Appointed, Spring 2018

^ Resigned, Spring 2019

ACADEMIC SCHOOL DEANS

School of Arts and Sciences	Dr. Danille K. Taylor
School of Business Administration	Dr. Sylvanus Udoka
School of Education	Dr. J. Fidel Turner
Whitney M. Young, Jr. School of Social Work	Dr. Jenny Jones

SOURCE: Office of Human Resources



DEGREE GRANTING DEPARTMENT CHAIRS

2017-2018

SCHOOL OF ARTS AND SCIENCES

African American Studies, Africana Women's Studies and History	Dr. Stephanie Evans	Chairperson
Art	Prof. Christopher Hickey, <i>Interim</i>	Chairperson
Biological Sciences	Dr. Paul Musey, <i>Interim</i>	Chairperson
Chemistry	Dr. Cass Parker, <i>Interim</i>	Chairperson
Computer & Information Sciences	Dr. Roy George	Chairperson
Doctor of Arts in Humanities	Dr. Rico Chapman	Director
Dual Degree Engineering Program*	Dr. Jaideep Chaudhary	Chairperson
English & Foreign Languages	Dr. Georgene Bess-Montgomery, <i>Interim</i>	Chairperson
Mass Media Arts	Dr. Nsenga Burton	Chairperson
Mathematical Sciences	Dr. Sandra Rucker, <i>Interim</i>	Chairperson
Music	Dr. James Adams, <i>Interim</i>	Chairperson
Physics	Dr. Swaraj Tayal, <i>Interim</i>	Chairperson
Political Science	Dr. Henry Elonge	Chairperson
Psychology	Dr. Timothy Moore	Chairperson
Public Administration	Dr. Henry Elonge	Chairperson
Religion & Philosophy	Dr. Philip Dunston	Chairperson
Sociology & Criminal Justice	Dr. Barbara Ciombs, <i>Interim</i>	Chairperson
Speech Communication and Theater Arts	Dr. Eve Graves	Chairperson

SCHOOL OF BUSINESS ADMINISTRATION

Decision Sciences and Economics	Dr. Young Kim	Chairperson
Accounting and Finance	Dr. Kasim Alli	Chairperson
Management and Marketing	Raphael Boyd	Chairperson

SCHOOL OF EDUCATION

Counselor Education	Dr. Kenard Sanders**	Chairperson
Counselor Education	Dr. Crystal Giddings***	Chairperson
Curriculum & Instruction	Dr. James Young	Chairperson
Educational Leadership	Dr. Barbara Hill	Chairperson

WHITNEY M. YOUNG, JR. SCHOOL OF SOCIAL WORK


Bachelor of Social Work	Dr. Margaret Counts-Spriggs	Chairperson
Master of Social Work	Dr. Eyitayo Onifade	Chairperson
Ph.D. in Social Work	Dr. Richard Lyle	Chairperson

* 3 plus 2 Dual Degree Program with partner engineering institutions

** Resigned, Spring 2018

*** Appointed, Spring 2018

SOURCE: Office of Academic Affairs



CLARK ATLANTA UNIVERSITY
Office of Planning, Assessment and Institutional Research
223 James P. Brawley Dr., SW
Atlanta, GA 30314
404-880-8061
www.cau.edu

