

**CAU** ***FORWARD***  
**TOGETHER**

**ONE** EXCEPTIONAL UNIVERSITY

**FACTBOOK**  
**2015 - 2019**



## TABLE OF CONTENTS

### GENERAL INFORMATION

University Profile .....	2
University History .....	3
List Of Academic Programs By School.....	4

### STUDENT INFORMATION

Undergraduate Enrollment By School, Program, Class And Gender.....	6
Graduate Enrollment By School, Program, Degree Level And Gender.....	7
Student Enrollment By Headcount Fall 2019.....	8
Student Enrollment By Headcount Spring 2016 – 2020 .....	9
Student Enrollment Summer 2016 – 2020 .....	10
Enrollment By Term, Level And Full-Time Equivalent (FTE).....	11
Total Student Enrollment By State, U.S. Territories, International And Level .....	12
Students Participating In Study Abroad Program By Country .....	13
Students Participating In Study Abroad Program By Major.....	14
On-Campus Student Occupancy Rates By Residence.....	15
University Campus Buildings .....	16
Student Right To Know On-Campus Crime Statistics .....	17

### UNDERGRADUATE STUDENT ENROLLMENT

Undergraduate New Student Applicant Yield Rate.....	19
First-Time Entering Freshman Profile .....	20
First-Time Freshman Enrollment By State, U.S. Territories, International And Gender .....	21
Undergraduate Enrollment By School, Class And Gender .....	22
Undergraduate Enrollment By School And Gender .....	23
Undergraduate Enrollment By Ethnicity And Gender .....	24
Undergraduate Enrollment By School And Program.....	25
Undergraduate Student Religious Preference By Gender .....	26
Undergraduate Enrollment By Residency And Gender .....	27
Undergraduate Enrollment By State, U.S. Territories And International .....	28
Undergraduate International Student Enrollment By Country And Gender.....	29

### GRADUATE STUDENT ENROLLMENT

Graduate New Student Applicant Yield Rate .....	30
Graduate Enrollment By School, Degree Type And Gender.....	31
Graduate Enrollment By School And Gender .....	32
Graduate Enrollment By School And Program .....	33
Graduate Enrollment By Ethnicity And Gender .....	34
Graduate Student Religious Preference By Gender .....	35
Graduate Enrollment By Residency And Gender.....	36
Graduate Enrollment By State, U.S. Territories And International.....	37



Graduate International Student Enrollment By Country And Gender .....	38
<b>STUDENT RETENTION, GRADUATION &amp; PLACEMENT</b>	
Undergraduate Student Retention And Graduation Report .....	40
Undergraduate First Generation Student Retention And Graduation Rate .....	41
Graduation Rates Of Students Receiving Athletically Related Aid .....	42
Graduate Master's Time To Degree .....	43
Graduate Doctorate Time To Degree .....	44
Undergraduate Degree Recipients By School, Cip Code, Major And Gender .....	45
Accelerated Bachelor/Master Dual Degree Recipients By School, Cip Code, Major And Gender .....	46
Master's Degree Recipients By School, Cip Code, Major And Gender .....	47
Doctoral Degree Recipients By School, Cip Code, Major And Gender .....	48
Undergraduate And Graduate Career Placement .....	49
<b>FACULTY / STAFF</b>	
Full-Time Instructional Faculty By School, Gender, Ethnicity, Rank, Tenure And Terminal Degree .....	50
Part-Time Instructional Faculty By School, Gender, Ethnicity And Terminal Degree .....	51
Full-Time Instructional Faculty Profile .....	52
Total Number Of Faculty By School, Division, Department .....	53
Instructional Faculty By Employment Status, Gender, And Race/Ethnicity .....	58
Total Employees By Employment Status And FTE .....	59
Faculty-Student And Staff-Student Ratio By Full-Time Equivalent (Fte)* .....	60
<b>FINANCIALS</b>	
Undergraduate Awarded Student Aid .....	62
Revenues Fy 2018-19 .....	63
Expenditures Fy 2018-19 .....	63
Undergraduate Student Costs Per Academic Year .....	64
Undergraduate On-Campus Student Cost Of Attendance Per Academic Year .....	64
<b>LIBRARY LEARNING RESOURCES</b>	
Library Collection Of Resources .....	66
<b>ADMINISTRATION</b>	
2019-2020 Organizational Structure .....	68
Board Of Trustees .....	69
Executive Cabinet .....	70
Degree Granting Department Chairs .....	71



## MISSION

Building on its social justice history and heritage, Clark Atlanta University is a culturally diverse, research-intensive, liberal arts institution that prepares and transforms the lives of students. CAU is located in the heart of Atlanta which is the epicenter of the Civil Rights Movement and modern center of emerging technologies and innovation. Ignited by its history, CAU is committed to delivering education that is accessible, relevant, and transformative.

*Approved by the Board of Trustees, May 17, 2019*

## VISION

Clark Atlanta University will be recognized internationally as a leading research institution of higher education and learning. The University will impact society through global innovation, transformative educational experiences, and high-value engagement.

*Approved by the Board of Trustees, May 17, 2019*

## CORE VALUES

Our University's core values are like a compass, a tool that guides the campus community in navigating uncertainty while keeping the big picture in mind. These values serve as the foundational steps the University will take towards achieving its strategic vision.

### ***"CAU P.R.I.D.E.S. ITSELF ON BEING ..."***

#### **People-Centric**

Treat students, colleagues, and broad beneficiaries of our services with professionalism, respect, responsiveness, focused on effective solutions.

#### **Research-Focused, Innovative and Creative**

Ignite new possibilities in research and advance knowledge of humankind.

#### **Inclusive and Accountable**

Promote collaboration and unity among students, faculty, and staff to provide a significant contribution are added to the University's body of knowledge.

#### **Diverse and Global**

Embrace and support all forms of human differences, ideas and perspectives, and our natural environment.

#### **Excellent**

Commit to high-quality in all we do to achieve our noble cause.

#### **Student-Centered**

Commit to leveraging our students' experience through teaching, learning, and service.

*Approved by the Board of Trustees, May 17, 2019*



## **Institutional Accreditation**

Clark Atlanta University is accredited by the Southern Association of Colleges and Schools Commission on Colleges to award the baccalaureate, masters, specialist and doctorate degrees. Contact the Commission on Colleges at 1866 Southern Lane, Decatur, Georgia, 30033-4097 or call 404-679-4500 for questions about the accreditation of Clark Atlanta University.

## **Academic Program Accreditations**

- AACSB International – The Association to Advance Collegiate Schools of Business
- Council on Social Work Education, B.S.W. and M.S.W. degree programs
- Council for Accreditation of Counseling and Related Educational Programs
- Network of Schools of Public Policy, Affairs, and Administration
- National Council for Accreditation of Teacher Education (Subsumed under Council for the Accreditation of Educator Preparation - CAEP)
- The Georgia Professional Standards Commission

## **Georgia State Authorization - Nonpublic Postsecondary Education Commission**

Clark Atlanta University is authorized by GNPEC to operate in the state of Georgia and is exempt from the "Nonpublic Postsecondary Educational Institutions Act of 1990" (O.C.G.A. 20-2-250.1). For further assistance, contact NPEC, 2082 East Exchange Place, Suite 220, Tucker, Georgia 30084-5305 or call 770-414-3300.

## **Religious Affiliation**

Clark Atlanta University is approved for listing as a United Methodist Church-related University by the University Senate General Board of Higher Education and Ministry of the United Methodist Church.

## **NCAA Athletic Affiliation**

Clark Atlanta University is affiliated with the National Collegiate Athletic Association (NCAA) Division II and has been a member of the Southern Intercollegiate Athletic Conference (SIAC) since 1913, when the Conference was established.

## **Equal Employment Opportunity and Affirmative Action Statement**

Clark Atlanta University is an equal opportunity/affirmative action employer. The University provides equal employment opportunities to all faculty, staff, students and applicants without regard to race, color, religion, sex, age, national origin, marital status, physical handicap, military or status as a Vietnam veteran in compliance with applicable federal and state laws that pertain to nondiscrimination. Such action shall include, but is not limited to, employment, promotion, demotion or transfer; recruitment or recruitment advertising; lay-off or separation; rates of pay or other forms of compensation and selection for training programs.

Clark Atlanta University is committed to providing equal educational opportunity for all qualified student applicants and enrolled students without regard to race, sex, religion, color, national origin, age, ancestry, physical handicap, military or marital status. This commitment to equal opportunity includes recruitment, admission, access to and usage of facilities, counseling and testing, financial assistance, placement and curricular programs and activities.



# **THE 2015-2019 FACTBOOK**

## **Tenth Edition**

### **Acknowledging Facts and Figures**

The Office of Planning, Assessment and Institutional Research (OPAR) is pleased to present the Clark Atlanta University 2015-2019 Fact Book. This publication contains both current and historical abstract of statistical information such as student, faculty and staff trends, academics, finances, library and learning resources, and physical plant from a variety of institutional databases. The data presented is frequently requested and is the definitive source of essential information that chronicles the University's progress over the past five years.

The compiled information is a result of data collected, recorded or retrieved from various sources by the fall and spring census dates and distributed to numerous campus offices and reported to federal, state and regional agencies.

The Fact Book is intended to serve as a resource for CAU constituents and decision makers engaged in planning, budgeting, evaluating and improving programs and services as well as reporting institutional effectiveness and stakeholder accountability.

Reader suggestions for improving subsequent editions are welcome.

Dr. Lauren Lopez  
Assistant Vice President  
404-880-6294  
[llopez@cau.edu](mailto:llopez@cau.edu)

**Office of Planning, Assessment and Institutional Research  
Kresge Hall, Rm. 300  
223 James P. Brawley Dr., SW  
Atlanta, GA 30314  
[www.cau.edu](http://www.cau.edu)**

**In order to ensure accurate and valid data collected through professional methods, the OPAR adheres to the Code of Ethics and Professional Practice ([www.airweb.org](http://www.airweb.org)) adopted by the Association of Institutional Research (AIR) and follows ethical principles and standards that guide the work of institutional research practitioners.**



## **GENERAL INFORMATION**



## UNIVERSITY PROFILE

### Fall 2019

Clark Atlanta University (CAU), formed in 1988 as a result of the consolidation of two independent historically black institutions — Atlanta University (1865) and Clark College (1869), is a United Methodist Church-related, private, coeducational, residential, and comprehensive urban research university. The University, one of the largest of the 37-member UNCF colleges, offers undergraduate, graduate and professional, and non-degree certificate programs.

CAU is classified by Carnegie as R2: Doctoral Universities – Higher Research Activity and the only private, independent graduate research institution in the HBCU community, and the only HBCU member of the Georgia Research Alliance. Clark Atlanta University is accredited by the Southern Association of Colleges and Schools Commission on Colleges to award the baccalaureate, masters, specialist and doctorate degrees. Contact the Commission on Colleges at 1866 Southern Lane, Decatur, Georgia, 30033-4097 or call 404-679-4500 for questions about the accreditation of Clark Atlanta University.

CAU is also accredited by the Association to Advance Collegiate Schools of Business (AACSB International); the National Council for Accreditation of Teacher Education (NCATE) now under Council for the Accreditation of Educator Preparation (CAEP) and the Georgia Professional Standards Commission (GPSC); the Council for Accreditation of Counseling and Related Educational Programs (CACREP); the Council on Social Work Education (CSWE); the Network of Schools of Public Policy, Affairs, and Administration (NASPAA); and the National Collegiate Athletic Association, Division II. CAU is authorized by Georgia State Nonpublic Postsecondary Education Commission (GNPEC) to operate in the state of Georgia. The University is approved for listing as United Methodist Church-affiliated University by the University Senate General Board of Higher Education and Ministry of the United Methodist Church.

The main campus, with 39 academic, administrative, and student support buildings spanning over 126 acres of land, is located about 1.5 miles southwest from the heart of metro downtown Atlanta, Georgia. The University is accessible from all major arteries – I-20, I-75, I-85, and I-285 of the State and Hartsfield Jackson International Airport.

The University offers 40 major areas of study through four schools – Arts and Sciences; Business Administration; Education; and Social Work and awards Bachelor's, Master's, Specialist, and Doctoral degrees. Highest enrolled undergraduate fields: Biology, Business Administration, Criminal Justice, Mass Media Arts, Psychology.

Total full-time teaching faculty number = 181, 92% of whom hold terminal degrees; 65% have tenure status. Faculty-student ratio is 1:19.

During the 2018-19 academic year, the University awarded a total of 691 degrees (483 Bachelor's; 171 Master's; 37 Doctorates). Retention of first-year students returning for a second year is 74% and six-year cohort graduation rate is 45%. Our graduates are deeply employed in the sectors such as business, film and media, medical and healthcare, and government.

Fall 2019 Headcount Enrollment = 3920 (3318 Undergraduate; 602 Graduate). Total Full-time Equivalent (FTE) = 3779.

Georgia students constitute 39% of total enrollment, 58% of students come from out-of-state and 3% represent the Caribbean Islands and more than 15 foreign countries. Female students constitute 75% of the total enrollment while male students comprise of 25%.

Currently there are seven University operated and two affiliated residential facilities to house 2400 students. There are more than 60 chartered student organizations including social fraternities and sororities.

As a NCAA Division II Southern Intercollegiate Athletic Conference member, the University provides athletic opportunities in varsity sports: Men – baseball, basketball, football, track/field & cross-country; Women – basketball, softball, tennis, track/field & cross-country, volleyball.

2019-20 Annual tuition/fees = \$24,422; Room/Board = \$9,716; Total Cost of Attendance is \$38,574.

The market value of the University's endowment asset is \$72,500,748 (as of June 30, 2019).

Economic Impact: \$541M combined gross sales and labor producing 3282 full and part-time jobs.





## UNIVERSITY HISTORY

Atlanta University, founded in 1865, by the American Missionary Association, with later assistance from the Freedman's Bureau, was, before consolidation, the nation's oldest graduate institution serving a predominantly African-American student body. By the late 1870s, Atlanta University had begun granting bachelor's degrees and supplying black teachers and librarians to the public schools of the South. In 1929-30, it began offering graduate education exclusively in various liberal arts areas, and in the social and natural sciences. It gradually added professional programs in social work, library science, and business administration. At this same time, Atlanta University affiliated with Morehouse and Spelman Colleges in a university plan known as the Atlanta University System. The campus was moved to its present site, and the modern organization of the Atlanta University Center emerged, with Clark College, Morris Brown College, and the Interdenominational Theological Center joining the affiliation later. The story of the Atlanta University over the next twenty years from 1930 includes many significant developments. The Schools of Library Science, Education, and Business Administration were established in 1941, 1944, and 1946 respectively. The Atlanta School of Social Work, long associated with the University, gave up its charter in 1947 to become an integral part of the University.

Clark College was founded in 1869 as Clark University by the Freedmen's Aid Society of the Methodist Episcopal Church, which later became the United Methodist Church. The University was named for Bishop Davis W. Clark, who was the first President of the Freedmen's Aid Society and became Bishop in 1864. A sparsely furnished room in Clark Chapel, a Methodist Episcopal Church in Atlanta's Summer Hill section, housed the first Clark College Class. In 1871, the school relocated to a new site on the newly purchased Whitehall and McDaniel Street property. In 1877, the School was chartered as Clark University.

An early benefactor, Bishop Gilbert Haven, visualized Clark as the "University" of all the Methodist schools founded for the education of freedmen. Strategically located in the gateway to the South, Clark was founded to "give tone" to all the other educational institutions of the Methodist Episcopal Church providing education for Negro youth. After the school had changed locations several times, Bishop Haven, who succeeded Bishop Clark, was instrumental in acquiring 450 acres in South Atlanta, where in 1880 (the institution relocated in 1883) the school conferred its first degree. Also in 1883, Clark established a department, named for Dr. Elijah H. Gammon, known as Gammon School of Theology, which in 1888 became an independent theological seminary and is now part of the Interdenominational Theological Center.

For purposes of economy and efficiency, during the 1930s, it was decided that Clark would join the Atlanta University Complex. In the winter of 1939, work began across town on an entirely new physical plant adjoining Atlanta University, Morehouse College, and Spelman College. In 1957, the controlling Boards of the six institutions (Atlanta University; Clark, Morehouse, Morris Brown and Spelman Colleges; and Gammon Theological Seminary) ratified new Articles of Affiliation creating the Atlanta University Center, the most prevalent consortium of African-American private institutions of higher education in the nation.

During the 1980s some of the advantages of proximity, which had seemed promising earlier, again became evident. Clark College and Atlanta University through consolidation preserved the best of the past and present and "Charted a Bold New Future." Clark Atlanta University was created on July 1, 1988. The new and historic University inherits the rich traditions of two independent institutions, connected over the years by a common heritage and commitment; by personal, corporate and consortia relationships; and by location.

The first President of Clark Atlanta University was Thomas W. Cole, Jr., Ph.D., who served concurrently as the President of both Atlanta University and Clark College prior to consolidation. Dr. Walter D. Broadnax, Ph.D., became the second President on August 1, 2002, and retired July 31, 2008. The third President, Dr. Carlton E. Brown, Ph.D., assumed leadership on August 1, 2008 and retired June 30, 2015. Ronald A. Johnson, Ph.D., became the University's fourth president on March 31, 2015, and resigned effective, December 7, 2018. George T. French, Jr., J.D., Ph.D., is currently serving as Clark Atlanta University's fifth President since September 1, 2019.



**LIST OF ACADEMIC PROGRAMS BY SCHOOL**  
**2018-2019**

CIP	MAJORS	DEGREES					
		UG	GM	Specialist	GD	Certificate	Accelerated/ Dual
<b>Arts &amp; Sciences</b>							
50299	Africana Women's Studies		M.A.				
50201	African American Studies		M.A.				
500701	Art	B.A.					
260101	Biology	B.S.	M.S.		Ph.D.		B.S./M.S. (ADP)
400501	Chemistry	B.S.	M.S.		Ph.D.		B.S./M.S. (ADP)
110101	Computer and Information Systems*	B.S.					
110701	Computer Science	B.S.	M.S.				B.S./M.S. (ADP)
110103	Cybersecurity	B.S.					
430104	Criminal Justice	B.A.	M.A.				
230101	English	B.A.	M.A.				
500407	Fashion Design and Merchandising	B.A.					
160901	French	B.A.	M.A.				
540101	History	B.A.	M.A.				
240103	Humanities Interdisciplinary Program				Ph.D.		
400599	Industrial Chemistry		M.S.				
90799	Mass Media Arts	B.A.					
270101	Mathematics	B.S.	M.S.				B.S./M.S. (ADP)
500901	Music	B.A.					
380101	Philosophy	B.A.					
400801	Physics	B.S.	M.S.				B.S./M.S. (ADP)
451001	Political Science	B.A.	M.A.		Ph.D.		
420101	Psychology	B.A., B.S.					
440401	Public Administration		M.P.A.				
380201	Religion	B.A.					
451101	Sociology	B.A.	M.A.				
160905	Spanish	B.A.	M.A.				
231304	Speech Communication	B.A.					
500505	Theatre Arts	B.A.					
<b>Business Administration</b>							
520301	Accounting	B.A.	M.A.				B.S./M.A. (ADP)
520201	Business Administration	B.A.	M.B.A.				
520601	Economics	B.A.	M.A.				
<b>Education</b>							
139999	Clinical Mental Health Counseling		M.A.				
131210	Early Childhood Education	B.A.				Post-Bach Certificate	
130401	Educational Leadership – School Administration (P-12)/ Higher Education		M.A.	Ed.S.	Ed.D.		
130101	Educational Studies	B.A.					
131101	School Counseling		M.A.				
131205	Secondary Education (Science or Math)		M.A.T.				
131001	Special Ed - Gen Curriculum		M.A.				
<b>Social Work</b>							
440701	Social Work	B.S.W.	M.S.W.		Ph.D.		
<b>TOTAL</b>		<b>29</b>	<b>25</b>	<b>1</b>	<b>6</b>	<b>1</b>	<b>6</b>

SOURCE: Office of University Registrar



# STUDENT INFORMATION



## UNDERGRADUATE ENROLLMENT BY SCHOOL, PROGRAM, CLASS AND GENDER

**FALL 2019**

SCHOOL/PROGRAM	1st YR FRESHMA		RETURNING FRESHMAN		SOPH		JUNIOR		SENIOR		TTL		GRAND TTL
	M	W	M	W	M	W	M	W	M	W	M	W	
<b>ARTS &amp; SCIENCES</b>													
Art	3	12		4	2	8	5	5	4	8	14	37	51
Biology	13	109	1	29	7	91	6	62	10	59	37	350	387
Chemistry	2	10		3	1	12	4	9	3	5	10	39	49
Computer and Information Sys	5	3	2		5	2	6	3	9	2	27	10	37
Computer Science	7	6	2	2	8	8	9	8	9	3	35	27	62
Criminal Justice Admin	6	66	2	16	7	53	15	46	14	41	44	222	266
Cybersecurity	1	1		1	4		1	3	3		9	5	14
Dual Deg Engineer - Chemistry *		1		2		4		2		2	0	11	11
Dual Deg Engineer - Physics *	3	2	5	1	8	3	11	4	2	1	29	11	40
Dual Deg Engineer- Comp Sci *		2	1		3	3	2	1	1		7	6	13
Dual Deg Engineering - Math	3	2		1	1	2	1	1			5	6	11
Dual Degree-Biology	1			1	1	1	1	4			3	6	9
English	1	1	1	2	1	10	1	3	3	7	7	23	30
Fashion Design/Merchandising	5	25	2	6	6	39	5	36	2	34	20	140	160
History		1	1	2	1	5	3	4	3	1	8	13	21
Mass Media Arts	19	88	22	19	51	96	39	79	25	85	156	367	523
Mathematics		5		2		4		4	5	3	5	18	23
Music	7	3	2	2	2	12	2	11	3	4	16	32	48
Philosophy				1		1	1	2		1	1	5	6
Physics		2					1			1	1	3	4
Political Science	5	35	1	5	3	22	1	21	2	22	12	105	117
Psychology	8	62	3	20	6	60	5	59	6	53	28	254	282
Psychology - BS Degree	2	18	1	2		14		8		10	3	52	55
Religion					1	1		1		1	1	3	4
Sociology	1	9		4	3	14	4	11	3	6	11	44	55
Spanish						1				1	0	2	2
Speech Communication	4	6		1	2	4		3	2	2	8	16	24
Theatre Arts	3	5	2	1	6	17	5	9	6	14	22	46	68
<b>TOTAL</b>	<b>99</b>	<b>474</b>	<b>48</b>	<b>127</b>	<b>129</b>	<b>487</b>	<b>128</b>	<b>399</b>	<b>115</b>	<b>366</b>	<b>519</b>	<b>1853</b>	<b>2372</b>
<b>BUSINESS ADMIN</b>													
Accounting	2	9	3	5	7	14	4	15	5	14	21	57	78
Business Administration (Concentrations: Entrepreneurship Mgmt, Accounting, Finance, International Bus., Management, Marketing, Sports & Ent. Mgmt., Supply Chain Mgmt.)	62	105	15	19	51	111	51	79	48	89	227	403	630
Economics	3	3	3	1		5		1	1	3	7	13	20
<b>TOTAL</b>	<b>67</b>	<b>117</b>	<b>21</b>	<b>25</b>	<b>58</b>	<b>130</b>	<b>55</b>	<b>95</b>	<b>54</b>	<b>106</b>	<b>255</b>	<b>473</b>	<b>728</b>
<b>EDUCATION</b>													
Early Childhood Education	1	12	1	4	5	23	1	17		11	8	67	75
Educational Studies		2			3	4		6	5	13	8	25	33
<b>TOTAL</b>	<b>1</b>	<b>14</b>	<b>1</b>	<b>4</b>	<b>8</b>	<b>27</b>	<b>1</b>	<b>23</b>	<b>5</b>	<b>24</b>	<b>16</b>	<b>92</b>	<b>108</b>
<b>SOCIAL WORK</b>													
Social Work	2	14	1	3	4	23	1	17	1	21	9	78	87
<b>TOTAL</b>	<b>2</b>	<b>14</b>	<b>1</b>	<b>3</b>	<b>4</b>	<b>23</b>	<b>1</b>	<b>17</b>	<b>1</b>	<b>21</b>	<b>9</b>	<b>78</b>	<b>87</b>
<b>UNDECIDED</b>													
Major Not Declared	2	10									2	10	12
Non Degree Seeking			2	9							2	9	11
<b>TOTAL</b>	<b>2</b>	<b>10</b>	<b>2</b>	<b>9</b>							<b>4</b>	<b>19</b>	<b>23</b>
<b>GRAND TOTAL</b>	<b>171</b>	<b>629</b>	<b>73</b>	<b>168</b>	<b>199</b>	<b>667</b>	<b>185</b>	<b>534</b>	<b>175</b>	<b>517</b>	<b>803</b>	<b>2515</b>	<b>3318</b>

\* 3 plus 2 Dual Degree Program with partner engineering institution

SOURCE: Banner by EDUCIAT/STUDENT Database



# GRADUATE ENROLLMENT BY SCHOOL, PROGRAM, DEGREE LEVEL AND GENDER

## FALL 2019

SCHOOL/PROGRAM	DOCTORATE		MASTER'S		SPECIALIST		CERTIFICATE		TTL		GRAND TTL
	M	W	M	W	M	W	M	W	M	W	
<b>ARTS &amp; SCIENCES</b>											
African American Studies			5	4					5	4	9
Africana Womens Studies				5					0	5	5
Biology	6	12		2					6	14	20
Chemistry	10	14	5	3					15	17	32
Computer and Information Sys*			1						1		1
Computer Science			10	5					10	5	15
Criminal Justice Admin			1	8					1	8	9
English			1	8					1	8	9
History			4						4	0	4
Humanities	14	32							14	32	46
Mathematics			2	3					2	3	5
Physics			2	1					2	1	3
Political Science	13	14	3	4					16	18	34
Public Administration			12	21					12	21	33
Romance Languages											
Sociology			2	3					2	3	5
<b>TOTAL</b>	<b>43</b>	<b>72</b>	<b>48</b>	<b>67</b>					<b>91</b>	<b>139</b>	<b>230</b>
<b>BUSINESS ADMINISTRATION</b>											
Accounting			2						2	0	2
Business Administration (Concentrations: Entrepreneurship Mgmt, Finance, Marketing, Sports & Ent. Mgmt., Supply Chain Mgmt.)			23	30					23	30	53
Economics											
<b>TOTAL</b>			<b>25</b>	<b>30</b>					<b>25</b>	<b>30</b>	<b>55</b>
<b>EDUCATION</b>											
Clinical Mental Hlth Counseling			1	21					1	21	22
Community Counseling				1					0	1	1
Early Childhood Education†							1	1	1	1	2
Educational Leadership	4	12	7	11					11	23	34
Higher Ed - Ed Leadership	18	15							13	17	30
Higher Ed Leadership Online	13	18							5	5	10
School Counseling			6	22					6	22	28
Secondary Education (Math or Science)			2	2					1	1	2
Special Ed - General Curriculum			2						2	0	2
<b>TOTAL</b>	<b>35</b>	<b>45</b>	<b>18</b>	<b>57</b>			<b>1</b>	<b>1</b>	<b>54</b>	<b>103</b>	<b>157</b>
<b>SOCIAL WORK</b>											
Social Work			23	114					23	114	137
SW Plan-Admin and Soc Sci	2	21							2	21	23
<b>TOTAL</b>	<b>2</b>	<b>21</b>	<b>23</b>	<b>114</b>					<b>25</b>	<b>135</b>	<b>160</b>
<b>UNDECIDED</b>											
Major Not Declared											
Non Degree Seeking											
<b>TOTAL</b>		<b>1</b>	<b>1</b>								
<b>GRAND TOTAL</b>	<b>80</b>	<b>139</b>	<b>115</b>	<b>268</b>			<b>1</b>	<b>1</b>	<b>195</b>	<b>407</b>	<b>602</b>

† Post-Bacc Certification

SOURCE: Banner by Ellucian/Student Database



## STUDENT ENROLLMENT BY HEADCOUNT

**FALL 2015 – 2019**

*As of Fall Census Dates*

	<b>FALL 2015</b>	<b>FALL 2016</b>	<b>FALL 2017</b>	<b>FALL 2018</b>	<b>FALL 2019</b>
<b>Total Students Enrolled:</b>	<b>3661</b>	<b>3884</b>	<b>3992</b>	<b>3911</b>	<b>3920</b>
<b>Total Full-Time Equivalent (FTE)*:</b>	<b>3489</b>	<b>3719</b>	<b>3821</b>	<b>3761</b>	<b>3779</b>
<b>Graduate Programs</b>	<b>920</b>	<b>791</b>	<b>690</b>	<b>586</b>	<b>602</b>
<b>Undergraduate Programs</b>	<b>2741</b>	<b>3093</b>	<b>3302</b>	<b>3325</b>	<b>3318</b>
<b>Undergraduate Student Enrollment Breakdown</b>					
New Students	959	1177	1119	1084	957
Returning Students	1782	1916	2183	2241	2361
Full-Time Students	2629	2986	3187	3234	3255
Part-Time Students	112	107	115	91	63
<b>Full-Time Equivalence (FTE)*</b>	<b>2702</b>	<b>3053</b>	<b>3261</b>	<b>3292</b>	<b>3291</b>
Male Students	723	893	909	830	803
Female Students	2018	2200	2393	2495	2515
Living On-Campus (Univ. Operated)	1748	1927	1995	2037	1935
<b>Graduate Student Enrollment Breakdown</b>					
New Students	246	222	141	170	232
Returning Students	674	569	549	416	370
Full-Time Students	657	559	459	385	414
Part-Time Students	263	232	231	201	188
<b>Full-Time Equivalence (FTE)*</b>	<b>787</b>	<b>666</b>	<b>560</b>	<b>469</b>	<b>488</b>
Male Students	285	262	219	185	195
Female Students	635	529	471	401	407
Living On-Campus (Univ. Operated)	36	35	20	34	40
<b>New Undergraduate Students</b>					
First-Time Freshmen	844	999	914	921	814
New Transfer-In	110	170	192	158	136
Special (Non-Degree)	5	8	13	5	7
<b>TOTAL</b>	<b>959</b>	<b>1177</b>	<b>1119</b>	<b>1084</b>	<b>957</b>

\* Number of FT UG Headcount plus TTL PT UG credit hours converted to FT (divide TTL PT hrs by 12)  
 Number of FT Grad Headcount plus TTL PT Grad credit hours converted to FT (divide TTL PT hrs by 9)

SOURCE: Banner by Ellucian/Student Database



## STUDENT ENROLLMENT BY HEADCOUNT

SPRING 2016 – 2020

*As of Spring Census Dates*

	SPRING 2016	SPRING 2017	SPRING 2018	SPRING 2019	SPRING 2020
<b>Total Students Enrolled:</b>	<b>3624</b>	<b>3811</b>	<b>3847</b>	<b>3787</b>	<b>3720</b>
<b>Total Full-Time Equivalent (FTE)*:</b>	<b>3420</b>	<b>3621</b>	<b>3661</b>	<b>3608</b>	<b>3571</b>
<b>Graduate Programs</b>	<b>897</b>	<b>777</b>	<b>644</b>	<b>562</b>	<b>604</b>
<b>Undergraduate Programs</b>	<b>2727</b>	<b>3034</b>	<b>3203</b>	<b>3225</b>	<b>3116</b>
<b>Undergraduate Student Enrollment Breakdown</b>					
New Students	171	144	154	83	95
Returning Students	2556	2890	3049	3142	3021
Full Time Students	2581	2923	3070	3103	3019
Part Time Students	146	111	133	122	97
<b>Full Time Equivalence (FTE)*</b>	<b>2675</b>	<b>2991</b>	<b>3155</b>	<b>3178</b>	<b>3081</b>
Male Students	782	876	855	811	759
Female Students	1945	2158	2348	2414	2357
Living On-Campus (Univ Operated)	1605	1849	1919	1989	1823
<b>Graduate Student Enrollment Breakdown</b>					
New Students	51	56	27	27	51
Returning Students	846	721	617	535	553
Full Time Students	581	499	391	327	403
Part Time Students	316	278	253	235	201
<b>Full Time Equivalence (FTE)*</b>	<b>745</b>	<b>630</b>	<b>506</b>	<b>430</b>	<b>490</b>
Male Students	287	248	201	175	191
Female Students	210	529	443	387	413
Living On-Campus (Univ Operated)	25	35	20	28	44
<b>New Undergraduate Students</b>					
First-Time Freshmen	114	78	67	33	26
New Transfer-In	51	66	87	50	61
Special (Non-Degree)	6	0	0	0	8
<b>Total</b>	<b>171</b>	<b>144</b>	<b>154</b>	<b>83</b>	<b>95</b>

\* Number of FT UG Headcount plus TTL PT UG credit hours converted to FT (divide TTL PT hrs by 12)  
 Number of FT Grad Headcount plus TTL PT Grad credit hours converted to FT (divide TTL PT hrs by 9)

SOURCE: Banner by Ellucian/Student Database



**STUDENT ENROLLMENT**  
**SUMMER 2016 – 2020**

	2016				2017				2018				2019				2020			
LEVEL	FT	PT	TTL	FTE*	FT	PT	TTL	FTE*	FT	PT	TTL	FTE*	FT	PT	TTL	FTE*	FT	PT	TTL	FTE*
<b>Undergraduate</b>	55	174	229	154.1	71	318	389	251	107	389	496	342	105	335	440	316	102	237	339	239
%	24%	76%	100%		18%	82%	100%		22%	78%	100%		24%	76%	100%		30%	70%	100%	
<b>Graduate</b>	111	89	200	148	122	66	188	147.7	78	59	137	101	85	55	140	106	109	56	165	131
%	56%	45%	100%		65%	35%	100%		57%	43%	100%		61%	39%	100%		66%	34%	100%	
<b>TOTAL</b>	<b>166</b>	<b>263</b>	<b>429</b>	<b>302.1</b>	<b>193</b>	<b>384</b>	<b>577</b>	<b>398.7</b>	<b>185</b>	<b>448</b>	<b>633</b>	<b>443</b>	<b>190</b>	<b>390</b>	<b>580</b>	<b>422</b>	<b>211</b>	<b>293</b>	<b>504</b>	<b>370</b>
%	39%	61%	100%		33%	67%	100%		29%	71%	100%		33%	67%	100%		42%	58%	100%	

\* FTE = Number of FT UG Headcount **plus** TTL PT UG credit hours converted to FT (divide TTL PT hrs by 9)

Number of FT Grad Headcount **plus** TTL PT Grad credit hours converted to FT (divide TTL PT hrs by 6)

SOURCE: Banner by Ellucian/Student Database





## ENROLLMENT BY TERM, LEVEL AND FULL-TIME EQUIVALENT (FTE)\*

**AY 2015-16 – 2019-20**

	AY 2015-16				AY 2016-17				AY 2017-18				AY 2018-19				AY 2019-20			
	FALL	SPG	SUM	TTL	FALL	SPG	SUM	TTL	FALL	SPG	SUM	TTL	FALL	SPG	SUM	TTL	FALL	SPG	SUM	TTL
Undergraduate	2741	2727	229	5697	3093	3034	389	6516	3302	3203	496	7001	3325	3225	440	6990	3318	3116	339	6773
Graduate	920	897	200	2017	791	777	188	1756	690	644	137	1471	586	562	140	1288	602	604	165	1371
<b>TOTAL</b>	<b>3661</b>	<b>3624</b>	<b>429</b>	<b>7714</b>	<b>3884</b>	<b>3811</b>	<b>577</b>	<b>8272</b>	<b>3992</b>	<b>3847</b>	<b>633</b>	<b>8472</b>	<b>3911</b>	<b>3787</b>	<b>580</b>	<b>8278</b>	<b>3920</b>	<b>3720</b>	<b>504</b>	<b>8144</b>
Undergraduate FTE*	2702	2675	154	5531	3053	2991	251	6295	3261	3155	342	6758	3292	3178	316	6786	3291	3081	239	6611
Graduate FTE*	787	745	148	1680	666	630	148	1444	560	506	101	1167	469	430	106	1005	488	490	131	1109
<b>TOTAL FTE</b>	<b>3489</b>	<b>3420</b>	<b>302</b>	<b>7211</b>	<b>3719</b>	<b>3621</b>	<b>399</b>	<b>7739</b>	<b>3821</b>	<b>3661</b>	<b>443</b>	<b>7925</b>	<b>3761</b>	<b>3608</b>	<b>422</b>	<b>7791</b>	<b>3779</b>	<b>3571</b>	<b>370</b>	<b>7720</b>

\*Fall/Spring FTE = Number of FT UG Headcount plus TTL PT UG credit hours converted to FT (divide TTL PT hrs by 12)  
 Number of FT Grad Headcount plus TTL PT Grad credit hours converted to FT (divide TTL PT hrs by 9)

\*Summer FTE = Number of FT UG Headcount plus TTL PT UG credit hours converted to FT (divide TTL PT hrs by 9)  
 Number of FT Grad Headcount plus TTL PT Grad credit hours converted to FT (divide TTL PT hrs by 6)

SOURCE: Banner by ElLucian/Student Database



**TOTAL STUDENT ENROLLMENT BY STATE, U.S. TERRITORIES,  
INTERNATIONAL AND LEVEL**

**FALL 2014 – 2018**

STATE, US TERRITORIES, INT	2015			2016			2017			2018			2019		
	UG	GRAD	TTL	UG	GRAD	TTL	UG	GRAD	TTL	UG	GRAD	TTL	UG	GRAD	TTL
ALABAMA	40	13	53	57	9	66	54	5	59	58	9	67	68	9	77
ALASKA							1	1	2				1		1
ARIZONA	8		8	4	1	5	7		7	5		5	5		5
ARKANSAS	8		8	6	1	7	8		8	12	1	13	13	1	14
CALIFORNIA	210	11	221	222	12	234	238	9	247	253	12	265	226	13	239
COLORADO	5	1	6	11	1	12	3		3	4	1	5	10		10
CONNECTICUT	17	2	19	26		26	31	2	33	34	2	36	27	2	29
DELAWARE	18	1	19	23		23	19	1	20	16	1	17	16	2	18
DIST. OF COLUMBIA	50	1	51	59	1	60	53		53	52		52	48	2	50
FLORIDA	116	15	131	151	13	164	142	13	155	145	9	154	149	7	156
GEORGIA	1000	637	1637	1035	510	1545	1122	432	1554	1093	399	1492	1086	426	1512
HAWAII															
IDAHO															
ILLINOIS	164	8	172	221	8	229	235	7	242	249	6	255	250	9	259
INDIANA	16		16	24		24	28		28	26	1	27	32	2	34
IOWA	1		1	2	1	3	2		2	1		1	1		1
KANSAS	4	1	5	4		4	3		3	3		3	2		2
KENTUCKY	9	3	12	15		15	15	1	16	16	2	18	16	1	17
LOUISIANA	27	7	34	29	4	33	36	2	38	41	2	43	47		47
MAINE															
MARYLAND	127	3	130	141	7	148	123	5	128	137	5	142	144	9	153
MASSACHUSETTS	16		16	20		20	21		21	24	2	26	27	1	28
MICHIGAN	75	4	79	86	5	91	92	4	96	90	1	91	96	3	99
MINNESOTA	19		19	24		24	18		18	13		13	14		14
MISSISSIPPI	17	2	19	21	4	25	29	5	34	31	5	36	29	4	33
MISSOURI	33	1	34	29	1	30	33		33	36	3	39	45	3	48
NEBRASKA	3		3	2		2	3		3	4		4	2		2
NEVADA	12		12	15		15	14		14	21		21	14		14
NEW HAMPSHIRE															
NEW JERSEY	44	6	50	53	1	54	55	1	56	74	2	76	74	1	75
NEW MEXICO														1	1
NEW YORK	157	10	167	161	14	175	187	6	193	200	6	206	210	6	216
NORTH CAROLINA	51	21	72	52	18	70	50	12	62	52	7	59	56	11	67
NORTH DAKOTA															
OHIO	70	6	76	69	9	78	71	3	74	75	2	77	90	1	91
OKLAHOMA	2	3	5	4	4	8	5	2	7	6	1	7	7		7
OREGON	8		8	9		9	6		6	4		4	5		5
PENNSYLVANIA	80	3	83	91	3	94	97		97	93	1	94	93	2	95
RHODE ISLAND	3		3	4		4	5		5	7		7	7		7
SOUTH CAROLINA	45	13	58	47	7	54	47	3	50	50	4	54	51	9	60
TENNESSEE	62	8	70	74	6	80	68	3	71	83	2	85	77	5	82
TEXAS	88	5	93	89	4	93	92	5	97	99	4	103	98	13	111
UTAH	1		1	2		2	1		1		1	1		1	1
VERMONT	1		1			0									
VIRGINIA	30	4	34	31	5	36	38	4	42	45	5	50	46	6	52
WASHINGTON	9	5	14	12	4	16	10	1	11	14		14	15		15
WEST VIRGINIA													1		1
WISCONSIN	21	2	23	20	3	23	33		33	23		23	30		30
UNKNOWN	2	5	7	8	8	16	8	5	13	7	2	9	4	4	8
<b>U.S. TERRITORIES</b>															
PUERTO RICO															
VIRGIN ISLANDS	6	1	7	9		9	5		5	3	1	4	2		2
<b>INTERNATIONAL</b>	66	118	184	131	127	258	194	158	352	126	87	213	84	48	132
<b>GRAND TOTAL</b>	<b>2741</b>	<b>920</b>	<b>3661</b>	<b>3093</b>	<b>791</b>	<b>3884</b>	<b>3302</b>	<b>690</b>	<b>3992</b>	<b>3325</b>	<b>586</b>	<b>3911</b>	<b>3318</b>	<b>602</b>	<b>3920</b>

SOURCE: Banner by Ellucian/Student Database



**STUDENTS PARTICIPATING IN STUDY ABROAD  
PROGRAM BY COUNTRY\***

**AY 2015 – 2019**

	<b>2015-16</b>	<b>2016-17</b>	<b>2017-18</b>	<b>2018-19</b>	<b>2019-20**</b>
Argentina	1				
Australia	2	1			
Bahamas					19
Brazil	1				
China	20	20	28	38	
Colombia	4				
Cuba	1	2		2	
Dominican Republic	2				
Ecuador					
England	4	2		29	2
Europe	1				
France	6	19	21	42	1
Ghana				6	
Greece			1	3	
Haiti			1		
India			14		
Italy	3			28	
Jamaica	8		15	4	
Liberia			2	3	
Netherlands			1	13	
Portugal				1	
Scotland					1
South Africa			1		
South Korea				1	
Spain	2	1		4	
Thailand	3				
<b>TOTAL</b>	<b>58</b>	<b>45</b>	<b>84</b>	<b>174</b>	<b>23</b>

\* Includes Graduate Students

\*\* There were 128 in the pipeline. However, the COVID-19 Pandemic prohibited these travels

SOURCE: Office of International Education/Study Abroad



## STUDENTS PARTICIPATING IN STUDY ABROAD PROGRAM BY MAJOR\*

AY 2015 – 2020

MAJOR	2015-16	2016-17	2017-18	2018-19	2019-20**
African American Studies					
Africana Women's Study					
Art	1	1	1	1	1
Biology	4	2	2	6	
Business Administration	14	11	8	26	15
Business Administration - Master's				1	
Computer Science			2	6	
Criminal Justice			6	5	
Dual-Degree Engineering	2		9	1	
Economics					1
Education	1	1	4	3	
English	2		2	1	
Fashion Design	6	5	6	7	
French	1				
History					
Mass Media Arts	20	13	23	59	2
Music			1	1	
Physics					
Political Science			2	1	
Psychology	5	9	10	18	3
Public Administration				7	1
Religion/Philosophy					
Social Work	1	1	1	2	
Sociology					
Spanish	1				
Speech Comm./Theatre Arts		2	7	29	
<b>TOTAL</b>	<b>58</b>	<b>45</b>	<b>84</b>	<b>174</b>	<b>23</b>

\* Includes Graduate Students

\*\* There were 128 in the pipeline. However, the COVID-19 Pandemic prohibited these travels

SOURCE: Office of International Education/Study Abroad



## ON-CAMPUS STUDENT OCCUPANCY RATES BY RESIDENCE

**FALL 2015 – 2019**

Building Name	Type	Level	2015			2016			2017			2018			2019		
			Max. Capacity	Actual	%	Max. Capacity	Actual	%	Max. Capacity	Actual	%	Max. Capacity	Actual	%	Max. Capacity	Actual	%
<b>CAU OPERATED</b>																	
Beckwith	Women	Freshman	274	*	*	299	240	80%	288	245	85%	288	266	92%	288	238	83%
New Brawley (Residential Apts.)	Coed	Upperclass	460	457	99%	464	444	96%	464	456	98%	464	454	98%	464	459	99%
Bumstead	Women	Freshman	148	*	*	148	*	*	148	*	*	148	*	*	148	*	*
Holmes	Women	Freshman	113	101	89%	112	101	90%	112	110	98%	112	106	95%	112	96	86%
Merner	Women	Freshman	114	108	95%	114	106	93%	112	112	100%	113	110	97%	113	99	88%
Pfeiffer	Men	Upperclass	117	103	88%	116	116	100%	112	112	100%	114	114	100%	114	98	86%
Ware	Men	Upperclass	162	*	*	162	*	*	162	*	*	162	*	*	162	*	*
<b>LEASED HOUSING</b>																	
CAU Suites	Coed	Upperclass	541	513	95%	565	533	94%	564	547	97%	564	556	99%	564	521	92%
Heritage Commons	Coed	Upperclass	419	404	96%	438	430	98%	438	433	99%	438	437	100%	438	433	99%
<b>GRAND TOTAL</b>			<b>2348</b>	<b>1686</b>	<b>72%</b>	<b>2418</b>	<b>1970</b>	<b>81%</b>	<b>2400</b>	<b>2015</b>	<b>84%</b>	<b>2403</b>	<b>2043</b>	<b>85%</b>	<b>2403</b>	<b>1944</b>	<b>81%</b>

\* Offline

SOURCE: Housing Occupancy Report



## UNIVERSITY CAMPUS BUILDINGS

FALL 2019

#	BUILDING NAME	OCCUPANCY*	BLDG CLASS**	YEAR ACQUISITION / CONSTRUCTED	YEAR LAST MAJOR RENOVATION	TOTAL SQUARE FOOTAGE
1	Aiken Estate	7		†		5,400
2	Alumni House	1		†		3,200
3	Beckwith Hall	3		1989		65,447
4	Bumstead/Ware Hall	3		1929		93,150
5	Career Placement Trailer #2	4		1986		1,800
6	Carl & Mary Ware Academic Center	2		2004		65,700
7	Clark Atlanta Stadium	4		1995		100,000
8	Clement Hall	2		1960	2010	22,602
9	Sage-Bacote Hall	2	M	1952	1994	20,178
10	Faculty/Staff Housing	3		†		36,250
11	Harkness Hall	6	M	1932		23,316
12	Haven-Warren Hall	7	M	1941	1994-95	47,590
13	Henderson Student Center	4		1998		72,000
14	Holmes Hall	3	M	1949	2008	29,450
15	Knowles Hall	6		1884	1994	10,312
16	Kresge Hall	1	M	1955		19,312
17	McPheeters-Dennis	2	M	1969		77,703
18	Merner Hall	3	M	1941	2008	22,663
19	Oglethorpe Hall	2		1905	1994	10,146
20	Park Street UMC	4	M	1927		38,400
21	Pfeiffer Hall	3		1941	2008	29,450
22	President's House (Holly Hill)	3	M	1927		5,900
23	Research Center for Science & Tech.	2		1989		172,640
24	Brawley Hall/Residential Apartments	3	M	1996		149,684
25	Comm. Arts/Robert Woodruff Library	2	M	1985		23,316
26	Shepard Power Plant	5		1931		8,929
27	Tanner-Turner Bldg.	1		1946		5,631
28	Thayer Hall	2	M	1941	2006	25,667
29	Trailer #1			†		1,800
30	Trevor-Arnett Hall	6	M	1931		52,596
31	Undergraduate Services Trailer #3			†		1,800
32	Vivian Henderson Center Gym	4	M	1975		80,000
33	Wright Hall	2	M	1965		27,360
	Environmental Sciences Engineer	4		2002		26,466
<b>TOTAL</b>						<b>1,375,858</b>

\* Occupancy

- |                   |                             |
|-------------------|-----------------------------|
| 1. Administrative | 4. Student Services         |
| 2. Academic       | 5. Physical Plant           |
| 3. Housing        | 6. National Historical Site |
|                   | 7. Multiple Purpose         |

\*\* Building Classification

M = Mason

† Not available at the time of printing

SOURCE: Facilities Management



**STUDENT RIGHT TO KNOW  
ON-CAMPUS CRIME STATISTICS**

**AY 2014-15 – 2018-19**

<b>TYPE OF OFFENSE</b>	<b>2014-15</b>	<b>2015-16</b>	<b>2016-17</b>	<b>2017-18</b>	<b>2018-19</b>
Murder/Non-negligent Manslaughter	0	0	0	0	0
Negligent Manslaughter	0	0	0	0	0
Sex offenses - Forcible	0	1	0	3	3
Sex offenses - Non-forcible	0	0	0	0	0
Robbery	1	0	11	12	5
Aggravated Assault	1	0	2	0	1
Burglary	11	2	12	9	9
Motor Vehicle Theft	1	0	2	1	0
Arson	0	0	0	0	0

SOURCE: Campus Safety and Security Survey



**UNDERGRADUATE  
STUDENT ENROLLMENT**





## UNDERGRADUATE NEW STUDENT APPLICANT YIELD RATE

**FALL 2015 – 2019**

	2015			2016			2017			2018			2019		
	New Freshman	New Transfer	TTL	New Freshman	New Transfer	TTL	New Freshman	New Transfer	TTL	New Freshman	New Transfer	TTL	New Freshman	New Transfer	TTL
Completed Applications	8616	954	9570	10733	479	11212	13940	838	14778	14942	696	15638	16483	653	17136
Applicants Admitted	4509	392	4901	7711	361	8072	8075	494	8569	7747	475	8222	9036	428	9464
Enrolled	844	110	954	999	170	1169	914	192	1106	921	158	1079	814	136	950
% of Applicants Admitted	52%	41%	51%	72%	75%	72%	58%	59%	58%	52%	68%	53%	55%	66%	55%
% of Applicants Enrolled	10%	12%	10%	9%	35%	10%	7%	23%	7%	6%	23%	7%	5%	21%	6%
% of Admitted Enrolled	19%	28%	19%	13%	47%	14%	11%	39%	13%	12%	33%	13%	9%	32%	10%

SOURCE: Banner by Ellucian/Student Database



## FIRST-TIME ENTERING FRESHMAN PROFILE

**FALL 2015 – 2019**

Cohort Term	2015		2016		2017		2018		2019	
<b>Application status:</b>										
Number of completed applications	8616		10733		13940		14942		16483	
Number of students admitted	4509	52%	7711	72%	8075	58%	7747	52%	9036	55%
Total number of students enrolled	844	19%	999	13%	914	11%	921	12%	814	9%

### ENROLLMENT BY

#### Gender:

Male	217	26%	248	25%	201	22%	200	22%	173	21%
Female	627	74%	751	75%	713	78%	721	78%	641	79%
<b>TOTAL</b>	844	100%	999	100%	914	100%	921	100%	814	100%

#### Residence:

Georgia State	253	30%	265	27%	294	32%	220	24%	213	26%
Out-Of-State	566	67%	709	71%	611	67%	695	75%	597	73%
Foreign	25	3%	25	3%	9	1%	6	1%	4	0%
<b>TOTAL</b>	844	100%	999	100%	914	100%	921	100%	814	100%

#### Intended Area of Study by School:

Arts & Sciences	568	67%	750	75%	680	74%	668	73%	583	72%
Business Administration	184	22%	175	18%	166	18%	196	21%	188	23%
Education	25	3%	17	2%	29	3%	27	3%	15	2%
Social Work	25	3%	19	2%	15	2%	22	2%	16	2%
Undecided	42	5%	38	4%	24	3%	8	1%	12	1%
<b>TOTAL</b>	844	100%	999	100%	914	100%	921	100%	814	100%

#### Academic Profile:

Average High School GPA	2.98		3.18		3.24		3.33		3.28	
Average SAT Score	840		903		925		1037		1014	
Average ACT Score	18		20		20		20		19	
Average Age	18		18		18		18		18	

SOURCE: Banner by Ellucian/Student Database



**FIRST-TIME FRESHMAN ENROLLMENT BY STATE, U.S. TERRITORIES,  
INTERNATIONAL AND GENDER**

**FALL 2015 – 2019**

STATE, US TERRITORIES, INT	2015			2016			2017			2018			2019		
	M	W	TTL	M	W	TTL	M	W	TTL	M	W	TTL	M	W	TTL
ALABAMA	3	10	13	8	15	23	4	16	20	7	13	20	3	15	18
ALASKA															
ARIZONA		3	3					3	3					2	2
ARKANSAS	1	1	2	1	3	4		3	3	2	4	6	2	1	3
CALIFORNIA	14	48	62	11	56	67	14	51	65	11	52	63	9	39	48
COLORADO		2	2		6	6		2	2		1	1	1	5	6
CONNECTICUT	2	4	6	1	13	14	2	11	13		11	11		2	2
DELAWARE	2	7	9	2	7	9	1	7	8		3	3	1	2	3
DIST. OF COLUMBIA	2	11	13	6	15	21	2	7	9	4	10	14	3	9	12
FLORIDA	7	31	38	14	46	60	13	29	42	10	33	43	10	40	50
GEORGIA	84	169	253	87	178	265	78	216	294	65	155	220	56	157	213
HAWAII															
IDAHO															
ILLINOIS	11	50	61	25	84	109	16	63	79	20	69	89	19	41	60
INDIANA		9	9	4	8	12	1	3	4	2	9	11	1	10	11
IOWA		1	1		1	1								1	1
KANSAS	1		1	1		1	1		1	1	1	2			
KENTUCKY		3	3	1	6	7	1	3	4	1	9	10	1	1	2
LOUISIANA	3	3	6	2	11	13	4	11	15	4	13	17	4	11	15
MAINE															
MARYLAND	7	41	48	9	38	47	5	26	31	10	38	48	8	38	46
MASSACHUSETTS		6	6	2	3	5	1	5	6	1	5	6		10	10
MICHIGAN	7	27	34	7	27	34	5	22	27	4	17	21	2	19	21
MINNESOTA		4	4		6	6	1	3	4	2		2	2	4	6
MISSISSIPPI	4	4	8	1	8	9	2	7	9	1	6	7	1	4	5
MISSOURI	5	11	16	1	6	7	2	5	7	5	11	16	2	17	19
NEBRASKA	1		1					1	1						
NEVADA	1	4	5		3	3	1	1	2	1	7	8	2		2
NEW HAMPSHIRE															
NEW JERSEY	4	11	15	1	18	19	4	15	19	5	28	33	2	17	19
NEW MEXICO															
NEW YORK	6	43	49	7	41	48	6	58	64	8	58	66	14	51	65
NORTH CAROLINA	3	11	14	2	20	22	2	12	14	5	14	19	3	12	15
NORTH DAKOTA															
OHIO	4	19	23	5	18	23	4	16	20	8	23	31	2	32	34
OKLAHOMA					1	1		2	2		1	1		2	2
OREGON	2	1	3	1	1	2		1	1				1	1	2
PENNSYLVANIA	6	20	26	3	29	32	7	25	32	4	31	35	7	18	25
RHODE ISLAND		2	2	1	1	2		1	1		1	1		1	1
SOUTH CAROLINA	4	13	17	3	9	12	3	11	14	4	17	21	3	11	14
TENNESSEE	8	11	19	8	23	31	7	14	21	1	27	28	4	14	18
TEXAS	2	29	31	3	26	29	3	28	31	6	27	33	3	23	26
UTAH				1		1									
VERMONT		1	1												
VIRGINIA		6	6	3	9	12	2	15	17	2	13	15	2	11	13
WASHINGTON		1	1	2	3	5		4	4		5	5	1	5	6
WEST VIRGINIA															
WISCONSIN	1	5	6		4	4	3	12	15	1	5	6	1	13	14
<b>U.S. TERRITORIES</b>															
PUERTO RICO															
VIRGIN ISLANDS		1	1	1	4	5							1		
<b>INTERNATIONAL</b>	21	4	25	23	2	25	6	3	9	3	3	6	2	2	4
<b>OTHER</b>	1		1	2	1	3		1	1	2	1	3			
<b>GRAND TOTAL</b>	<b>217</b>	<b>627</b>	<b>844</b>	<b>249</b>	<b>750</b>	<b>999</b>	<b>201</b>	<b>713</b>	<b>914</b>	<b>200</b>	<b>721</b>	<b>921</b>	<b>173</b>	<b>641</b>	<b>814</b>

SOURCE: Banner by Ellucian/Student Database



## UNDERGRADUATE ENROLLMENT BY SCHOOL, CLASS AND GENDER

**FALL 2015 – 2019**

SCHOOL	2015			2016			2017			2018			2019		
	M	W	TTL	M	W	TTL	M	W	TTL	M	W	TTL	M	W	TTL
<b>ARTS &amp; SCIENCES</b>															
New Freshmen	144	424	568	172	578	750	143	537	680	131	535	666	99	474	573
Returning Freshmen	57	148	205	113	156	269	86	178	264	62	146	208	48	127	175
Sophomores	104	331	435	108	347	455	159	467	626	144	477	621	129	487	616
Juniors	102	271	373	100	270	370	96	304	400	126	403	529	128	399	527
Seniors	74	254	328	80	240	320	100	252	352	72	257	329	115	366	481
<b>TOTAL</b>	<b>481</b>	<b>1428</b>	<b>1909</b>	<b>573</b>	<b>1591</b>	<b>2164</b>	<b>584</b>	<b>1738</b>	<b>2322</b>	<b>535</b>	<b>1818</b>	<b>2353</b>	<b>519</b>	<b>1853</b>	<b>2372</b>
<b>BUSINESS ADMINISTRATION</b>															
New Freshmen	58	126	184	65	110	175	51	115	166	59	136	195	67	117	184
Returning Freshmen	19	35	54	68	55	123	48	50	98	24	44	68	21	25	46
Sophomores	57	83	140	53	101	154	76	132	208	55	123	178	58	130	188
Juniors	38	70	108	51	60	111	50	84	134	65	114	179	55	95	150
Seniors	29	72	101	42	80	122	57	64	121	57	80	137	54	106	160
<b>TOTAL</b>	<b>201</b>	<b>386</b>	<b>587</b>	<b>279</b>	<b>406</b>	<b>685</b>	<b>282</b>	<b>445</b>	<b>727</b>	<b>260</b>	<b>497</b>	<b>757</b>	<b>255</b>	<b>473</b>	<b>728</b>
<b>EDUCATION</b>															
New Freshmen	1	24	25	2	15	17	3	26	29	3	24	27	1	14	15
Returning Freshmen	2	11	13	2	8	10		7	7	1	6	7	1	4	5
Sophomores	3	21	24	5	24	29	5	18	23	4	19	23	8	27	35
Juniors	4	10	14	3	15	18	5	24	29	5	19	24	1	23	24
Seniors	1	13	14	2	10	12	7	18	25	2	20	22	5	24	29
<b>TOTAL</b>	<b>11</b>	<b>79</b>	<b>90</b>	<b>14</b>	<b>72</b>	<b>86</b>	<b>20</b>	<b>93</b>	<b>113</b>	<b>15</b>	<b>88</b>	<b>103</b>	<b>16</b>	<b>92</b>	<b>108</b>
<b>SOCIAL WORK</b>															
New Freshmen	4	21	25		19	19		15	15	3	19	22	2	14	16
Returning Freshmen	1	7	8	2	7	9	2	7	9	1	6	7	1	3	4
Sophomores	3	21	24	3	26	29	3	21	24		17	17	4	23	27
Juniors	3	19	22	5	15	20	4	23	27	2	19	21	1	17	18
Seniors	1	21	22	1	21	22	2	17	19	6	18	24	1	21	22
<b>TOTAL</b>	<b>12</b>	<b>89</b>	<b>101</b>	<b>11</b>	<b>88</b>	<b>99</b>	<b>11</b>	<b>83</b>	<b>94</b>	<b>12</b>	<b>79</b>	<b>91</b>	<b>9</b>	<b>78</b>	<b>87</b>
<b>SCHOOL UNDECIDED</b>															
New Freshmen	10	32	42	9	29	38	4	20	24	4	7	11	2	10	12
Returning Freshmen	5	3	8	6	12	18	4	12	16	4	6	10	2	9	11
Sophomores	3	1	4	1	2	3	4	2	6						
Juniors															
Seniors															
<b>TOTAL</b>	<b>18</b>	<b>36</b>	<b>54</b>	<b>16</b>	<b>43</b>	<b>59</b>	<b>12</b>	<b>34</b>	<b>46</b>	<b>8</b>	<b>13</b>	<b>21</b>	<b>4</b>	<b>19</b>	<b>23</b>

SOURCE: Banner by ElLucian/Student Database



**UNDERGRADUATE ENROLLMENT BY SCHOOL AND GENDER**  
**FALL 2015 – 2019**

SCHOOL	2015				2016				2017				2018				2019			
	M	W	TTL	%	M	W	TTL	%	M	W	TTL	%	M	W	TTL	%	M	W	TTL	%
Arts and Sciences	481	1428	1909	70%	573	1591	2164	70%	584	1738	2322	70%	535	1818	2353	71%	519	1853	2372	71%
Business Administration	201	386	587	21%	279	406	685	22%	282	445	727	22%	260	497	757	23%	255	473	728	22%
Education	11	79	90	3%	14	72	86	3%	20	93	113	3%	15	88	103	3%	16	92	108	3%
Social Work	12	89	101	4%	11	88	99	3%	11	83	94	3%	12	79	91	3%	9	78	87	3%
Undecided	18	36	54	2%	16	43	59	2%	12	34	46	1%	8	13	21	1%	4	19	23	1%
<b>GRAND TOTAL</b>	<b>723</b>	<b>2018</b>	<b>2741</b>	<b>100%</b>	<b>893</b>	<b>2200</b>	<b>3093</b>	<b>100%</b>	<b>909</b>	<b>2393</b>	<b>3302</b>	<b>100%</b>	<b>830</b>	<b>2495</b>	<b>3325</b>	<b>100%</b>	<b>803</b>	<b>2515</b>	<b>3318</b>	<b>100%</b>
<b>TOTAL PERCENT</b>	<b>26%</b>	<b>74%</b>	<b>100%</b>		<b>29%</b>	<b>71%</b>	<b>100%</b>		<b>28%</b>	<b>72%</b>	<b>100%</b>		<b>25%</b>	<b>75%</b>	<b>100%</b>		<b>24%</b>	<b>76%</b>	<b>100%</b>	

SOURCE: Banner by Ellucian/Student Database



**UNDERGRADUATE ENROLLMENT BY ETHNICITY AND GENDER**  
**FALL 2015 – 2019**

ETHNICITY	2015				2016				2017				2018				2019			
	M	W	TTL	%	M	W	TTL	%	M	W	TTL	%	M	W	TTL	%	M	W	TTL	%
Non-Resident Alien	51	15	66	2%	115	16	131	4%	169	25	194	6%	105	21	126	4%	65	19	84	3%
American Indian/Alaskan Native	1	2	3	0%	1	2	3	0%	2	2	4	0%	1	5	6	0%	1	6	7	0%
Asian or Pacific Islander	4	1	5	0%	4	2	6	0%	1	1	2	0%	1	1	2	0%	1	3	4	0%
Black or African American	560	1733	2293	84%	631	1926	2557	83%	667	2146	2813	85%	660	2292	2952	89%	691	2369	3060	92%
Hispanic	4	7	11	0%	2	4	6	0%	1	3	4	0%	1	5	6	0%	2	4	6	0%
White/Non-Hispanic		1	1	0%	3	3	6	0%	1	2	3	0%	1	2	3	0%	2	2	4	0%
Other/Unknown	103	259	362	13%	137	247	384	12%	68	214	282	9%	61	169	230	7%	41	112	153	5%
<b>GRAND TOTAL</b>	<b>723</b>	<b>2018</b>	<b>2741</b>	<b>100%</b>	<b>893</b>	<b>2200</b>	<b>3093</b>	<b>100%</b>	<b>909</b>	<b>2393</b>	<b>3302</b>	<b>100%</b>	<b>830</b>	<b>2495</b>	<b>3325</b>	<b>100%</b>	<b>803</b>	<b>2515</b>	<b>3318</b>	<b>100%</b>

SOURCE: Banner by Ellucian/Student Database



## UNDERGRADUATE ENROLLMENT BY SCHOOL AND PROGRAM

**FALL 2015 – 2019**

SCHOOL/PROGRAM	2015	2016	2017	2018	2019
<b>ARTS &amp; SCIENCES</b>					
Art	34	46	63	50	51
Biology	300	374	403	418	387
Chemistry	24	26	46	50	49
Computer and Information Systems	43	68	82	68	37
Computer Science	58	85	86	69	62
Criminal Justice Administration	200	244	267	282	266
Cybersecurity				4	14
Dual Deg Engineer - Chemistry*	23	19	13	13	11
Dual Deg Engineer - Physics*	20	29	38	46	40
Dual Deg Engineer- Comp Sci*	16	27	23	16	13
Dual Deg Engineer- Math			4	4	11
Dual Deg Engineer- Biology			5		9
English	33	35	31	37	30
Fashion Design & Merchandising	168	166	157	143	160
French	3	3	2	2	
History	10	11	14	18	21
Mass Media Arts	475	493	519	503	523
Mathematics	20	14	16	15	23
Music	29	30	32	42	48
Philosophy	5	8	6	5	6
Physics	3	4	2	1	4
Political Science	66	77	94	105	117
Psychology	285	302	307	311	337
Religion	5	5	4	4	4
Sociology	24	35	36	44	55
Spanish	1	2	2	4	2
Speech Comm and Theatre Arts			23	0	
Speech Communication	17	19		30	24
Theatre Arts	47	42	47	69	68
<b>TOTAL</b>	<b>1909</b>	<b>2164</b>	<b>2322</b>	<b>2353</b>	<b>2372</b>
<b>BUSINESS ADMINISTRATION</b>					
Accounting	76	80	83	89	78
Business Administration (Concentrations: Entrepreneurship Mgmt, Finance, International Bus., Management, Accounting, Marketing, Sports & Ent. Mgmt., Supply Chain Mgmt.)	501	593	634	651	630
Economics	10	12	10	17	20
<b>TOTAL</b>	<b>587</b>	<b>685</b>	<b>727</b>	<b>757</b>	<b>728</b>
<b>EDUCATION</b>					
Early Childhood Education	77	50	66	64	75
Educational Studies	13	36	47	39	33
<b>TOTAL</b>	<b>90</b>	<b>86</b>	<b>113</b>	<b>103</b>	<b>108</b>
<b>SOCIAL WORK</b>					
Social Work	101	99	94	91	87
<b>TOTAL</b>	<b>101</b>	<b>99</b>	<b>94</b>	<b>91</b>	<b>87</b>
<b>UNDECIDED</b>					
Major Not Declared	50	47	30	11	12
Non Degree Seeking	4	12	16	10	11
<b>TOTAL</b>	<b>54</b>	<b>59</b>	<b>46</b>	<b>21</b>	<b>23</b>
<b>GRAND TOTAL</b>	<b>2741</b>	<b>3093</b>	<b>3302</b>	<b>3325</b>	<b>3318</b>

\* 3 plus 2 Dual Degree Program with partner engineering institutions

SOURCE: Banner by Ellucian/Student Database



## UNDERGRADUATE STUDENT RELIGIOUS PREFERENCE BY GENDER

**FALL 2015 – 2019**

RELIGION/DENOMINATION	2015				2016				2017				2018				2019			
	M	W	TTL	%	M	W	TTL	%	M	W	TTL	%	M	W	TTL	%	M	W	TTL	%
African Methodist Episcopal	5	11	16	1%	5	7	12	0%	3	5	8	0%	3	6	9	0%	1	4	5	0%
Agnostic										2			5	5	10	0%	4	6	10	0%
Anglican													1	1	0%		1	1	0%	
Atheist													1	1	2	0%		2	2	0%
Baptist	152	500	652	24%	184	657	841	27%	220	826	1046	32%	222	929	1151	35%	230	900	1130	34%
Buddhist						1	1	0%				0%				0%		1	1	0%
Catholic	22	53	75	3%	16	51	67	2%	12	50	62	2%	14	42	56	2%	14	31	45	1%
Christian	210	670	880	32%	214	599	813	26%	192	555	747	23%	155	471	626	19%	125	368	493	15%
Christian Methodist Episcopal		1	1	0%		1	1	0%	1	3	4	0%	1	3	4	0%	1	3	4	0%
Christian Scientist						1	1	0%		1	1	0%		2	2	0%		1	1	0%
Church of Christ					4	21	25	1%	4	26	30	1%	7	33	40	1%	9	34	43	1%
Church of God	4	5	9	0%	5	5	10	0%	3	8	11	0%	1	4	5	0%		3	3	0%
Church of God in Christ	2	6	8	0%	5	14	19	1%	12	39	51	2%	15	58	73	2%	14	72	86	3%
Disciples of Christ						1	1	0%	1	1	2	0%	1	3	4	0%	2	3	5	0%
Episcopal	1	3	4	0%		3	3	0%		1	1	0%		2	2	0%		3	3	0%
Islamic	18	19	37	1%	46	12	58	2%	50	12	62	2%	33	8	41	1%	20	7	27	1%
Jehovah's Witness	2	1	3	0%	3	3	6	0%	4	3	7	0%	4	7	11	0%	3	5	8	0%
Jewish														1	1	0%		1	1	0%
Lutheran	2	2	4	0%	4		4	0%	4	2	6	0%	3	3	6	0%	3	4	7	0%
Methodist					1	9	10	0%	4	14	18	1%	11	22	33	1%	12	23	35	1%
Muslim					13	5	18	1%	9	7	16	0%	8	12	20	1%	9	17	26	1%
Non-Denomination						4	4	0%	1	9	10	0%	1	11	12	0%	1	11	12	0%
Orthodox													1		1	0%				0%
Other	99	343	442	16%	80	280	360	12%	73	247	320	10%	63	222	285	9%	92	332	424	13%
Pentecostal	6	30	36	1%	10	35	45	1%	10	40	50	2%	12	49	61	2%	8	43	51	2%
Presbyterian		2	2	0%		1	1	0%	1	1	2	0%	1	2	3	0%	1	2	3	0%
Seventh Day Adventist	2	6	8	0%	1	10	11	0%	1	8	9	0%	2	6	8	0%	2	10	12	0%
Unitarian						1	1	0%		1	1	0%		1	1	0%				0%
United Methodist	8	19	27	1%	12	13	25	1%	6	10	16	0%	3	4	7	0%	2	2	4	0%
Unknown	190	347	537	20%	290	466	756	24%	298	522	820	25%	263	587	850	26%	250	626	876	26%
<b>GRAND TOTAL</b>	<b>723</b>	<b>2018</b>	<b>2741</b>	<b>100%</b>	<b>893</b>	<b>2200</b>	<b>3093</b>	<b>100%</b>	<b>909</b>	<b>2393</b>	<b>3302</b>	<b>100%</b>	<b>830</b>	<b>2495</b>	<b>3325</b>	<b>100%</b>	<b>803</b>	<b>2515</b>	<b>3318</b>	<b>100%</b>

SOURCE: Banner by Ellucian/Student Database





**UNDERGRADUATE ENROLLMENT BY RESIDENCY AND GENDER**  
**FALL 2015 – 2019**

TERM RESIDENCY/GENDER	2015				2016				2017				2018				2019			
	M	W	TTL	%	M	W	TTL	%	M	W	TTL	%	M	W	TTL	%	M	W	TTL	%
GEORGIA STATE	335	665	1000	36%	368	667	1035	33%	334	788	1122	34%	322	771	1093	33%	313	773	1086	33%
OUT OF STATE & U.S. TERRITORIES	335	1338	1673	61%	406	1516	1922	62%	404	1574	1978	60%	403	1702	2105	63%	425	1723	2148	65%
UNKNOWN STATE	2		2	0%	4	1	5	0%	2	6	8	0%		1	1	0%				0%
INTERNATIONAL	51	15	66	2%	115	16	131	4%	169	25	194	6%	105	21	126	4%	65	19	84	3%
<b>GRAND TOTAL</b>	<b>723</b>	<b>2018</b>	<b>2741</b>	<b>100%</b>	<b>893</b>	<b>2200</b>	<b>3093</b>	<b>100%</b>	<b>909</b>	<b>2393</b>	<b>3302</b>	<b>100%</b>	<b>830</b>	<b>2495</b>	<b>3325</b>	<b>100%</b>	<b>803</b>	<b>2515</b>	<b>3318</b>	<b>100%</b>

SOURCE: Banner by Ellucian/Student Database



## UNDERGRADUATE ENROLLMENT BY STATE, U.S. TERRITORIES AND INTERNATIONAL

**FALL 2015 – 2019**

STATE, US TERRITORIES, INT	2015			2016			2017			2018			2019		
	M	W	TTL	M	W	TTL	M	W	TTL	M	W	TTL	M	W	TTL
ALABAMA	10	30	40	21	36	57	16	38	54	17	41	58	20	48	68
ALASKA							1		1					1	
ARIZONA	1	7	8		4	4		7	7		5	5		5	5
ARKANSAS	2	6	8	2	4	6	1	7	8	3	9	12	4	9	13
CALIFORNIA	38	172	210	38	184	222	39	199	238	44	209	253	41	185	226
COLORADO		5	5	1	10	11		3	3		4	4	1	9	10
CONNECTICUT	4	13	17	6	20	26	4	27	31	3	31	34	2	25	27
DELAWARE	6	12	18	8	15	23	4	15	19	2	14	16	4	12	16
DIST. OF COLUMBIA	10	40	50	15	44	59	14	39	53	12	40	52	10	38	48
FLORIDA	30	86	116	38	113	151	44	98	142	37	108	145	38	111	149
GEORGIA	335	665	1000	368	667	1035	334	788	1122	322	771	1093	313	773	1086
ILLINOIS	30	134	164	47	174	221	52	183	235	53	196	249	63	187	250
INDIANA	2	14	16	5	19	24	5	23	28	5	21	26	5	27	32
IOWA		1	1		2	2		2	2		1	1		1	1
KANSAS	1	3	4	2	2	4	1	2	3	2	1	3	1	1	2
KENTUCKY		9	9	1	14	15	2	13	15	2	14	16	4	12	16
LOUISIANA	9	18	27	4	25	29	10	26	36	9	32	41	9	38	47
MARYLAND	19	108	127	24	117	141	19	104	123	24	113	137	28	116	144
MASSACHUSETTS	1	15	16	3	17	20	1	20	21	2	22	24	1	26	27
MICHIGAN	13	62	75	14	72	86	17	75	92	21	69	90	24	72	96
MINNESOTA	4	15	19	4	20	24	4	14	18	4	9	13	5	9	14
MISSISSIPPI	5	12	17	5	16	21	7	22	29	6	25	31	6	23	29
MISSOURI	6	27	33	5	24	29	8	25	33	11	25	36	8	37	45
NEBRASKA	2	1	3	1	1	2	1	2	3	2	2	4	1	1	2
NEVADA	2	10	12	3	12	15	5	9	14	5	16	21	3	11	14
NEW JERSEY	9	35	44	10	43	53	10	45	55	13	61	74	11	63	74
NEW YORK	24	133	157	28	133	161	28	159	187	24	176	200	34	176	210
NORTH CAROLINA	14	37	51	8	44	52	8	42	50	8	44	52	10	46	56
OHIO	15	55	70	14	55	69	15	56	71	18	57	75	20	70	90
OKLAHOMA	1	1	2	1	3	4		5	5		6	6		7	7
OREGON	3	5	8	2	7	9	1	5	6		4	4	1	4	5
PENNSYLVANIA	15	65	80	19	72	91	20	77	97	15	78	93	17	76	93
RHODE ISLAND		3	3	1	3	4		5	5		7	7	1	6	7
SOUTH CAROLINA	12	33	45	11	36	47	12	35	47	10	40	50	8	43	51
TENNESSEE	21	41	62	27	47	74	25	43	68	20	63	83	15	62	77
TEXAS	15	73	88	18	71	89	14	78	92	14	85	99	13	85	98
UTAH		1	1	1	1	2	1		1						
VERMONT		1	1												
VIRGINIA	7	23	30	9	22	31	6	32	38	10	35	45	8	38	46
WASHINGTON	2	7	9	5	7	12	1	9	10		14	14	2	13	15
WEST VIRGINIA													1		
WISCONSIN	2	19	21	3	17	20	7	26	33	5	18	23	4	26	30
UNKNOWN	2		2	5	3	8	2	6	8	2	5	7	1	3	4
<b>U.S. TERRITORIES</b>															
VIRGIN ISLANDS		6	6	1	8	9	1	4	5		3	3	1	1	2
<b>INTERNATIONAL</b>	51	15	66	115	16	131	169	25	194	105	21	126	65	19	84
<b>GRAND TOTAL</b>	<b>723</b>	<b>2018</b>	<b>2741</b>	<b>893</b>	<b>2200</b>	<b>3093</b>	<b>909</b>	<b>2393</b>	<b>3302</b>	<b>830</b>	<b>2495</b>	<b>3325</b>	<b>803</b>	<b>2515</b>	<b>3318</b>

SOURCE: Banner by Ellucian/Student Database



**UNDERGRADUATE INTERNATIONAL STUDENT ENROLLMENT BY  
COUNTRY AND GENDER**

**FALL 2015 – 2019**

COUNTRY	2015			2016			2017			2018			2019		
	M	W	TTL	M	W	TTL	M	W	TTL	M	W	TTL	M	W	TTL
Angola	1		1				1		1						
Anguilla		1	1		1	1									
Australia														1	1
Bahamas				1	1	2	1	2	3		2	2		2	2
Bermuda		2	2		2	2		1	1		1	1		1	1
China								1	1						
Cote'd'ivoire								1	1						
Canada		1	1												
Curacao				1		1	1		1	1	1	2	1	1	2
Dominica													1		1
Egypt				1		1				1		1			
Guyana								1	1		1	1		1	1
India		1	1												
Libya							1		1	1		1	1		1
Myanmar								1	1						
Nigeria	1		1		1	1	1		1	1	1	2	1	1	2
Portugal				1		1									
Republic of Serbia										1		1			
Saudi Arabia	7		7	102	10	112	163	18	181	100	15	115	61	11	72
South Korea							1		1						
Tanzania, United Republic of		1	1		1	1									
United Kingdom														1	1
Unknown	42	9	51	9		9									
<b>GRAND TOTAL</b>	<b>51</b>	<b>15</b>	<b>66</b>	<b>115</b>	<b>16</b>	<b>131</b>	<b>169</b>	<b>25</b>	<b>194</b>	<b>105</b>	<b>21</b>	<b>126</b>	<b>65</b>	<b>19</b>	<b>84</b>

SOURCE: Banner by Ellucian/Student Database



# GRADUATE STUDENT ENROLLMENT



## GRADUATE NEW STUDENT APPLICANT YIELD RATE

FALL 2015 – 2019

	2015	2016	2017	2018	2019
Completed Applications	1034	533	342	307	482
Applicants Admitted	387	378	280	241	343
Enrolled	246	222	141	170	232
% of Applicants Admitted	37%	71%	82%	79%	71%
% of Applicants Enrolled	24%	42%	41%	55%	48%
% of Admitted Enrolled	64%	59%	50%	71%	68%

SOURCE: Banner by Ellucian/Student Database



## GRADUATE ENROLLMENT BY SCHOOL, DEGREE TYPE AND GENDER

**FALL 2015 – 2019**

SCHOOL	2015			2016			2017			2018			2019		
	M	W	TTL	M	W	TTL	M	W	TTL	M	W	TTL	M	W	TTL
<b>ARTS &amp; SCIENCES</b>															
Doctorate	54	77	131	48	74	122	46	76	122	42	79	121	43	72	115
Master's	85	93	178	92	106	198	69	104	173	55	79	134	48	67	115
<b>TOTAL</b>	<b>139</b>	<b>170</b>	<b>309</b>	<b>140</b>	<b>180</b>	<b>320</b>	<b>115</b>	<b>180</b>	<b>295</b>	<b>97</b>	<b>158</b>	<b>255</b>	<b>91</b>	<b>139</b>	<b>230</b>
<b>BUSINESS ADMINISTRATION</b>															
Master's	40	48	88	25	46	71	20	29	49	17	21	38	25	30	55
<b>TOTAL</b>	<b>40</b>	<b>48</b>	<b>88</b>	<b>25</b>	<b>46</b>	<b>71</b>	<b>20</b>	<b>29</b>	<b>49</b>	<b>17</b>	<b>21</b>	<b>38</b>	<b>25</b>	<b>30</b>	<b>55</b>
<b>EDUCATION</b>															
Doctorate	24	47	71	26	38	64	24	33	57	28	41	69	35	45	80
Masters	23	67	90	29	38	67	33	58	91	23	57	80	18	57	75
Specialist	2		2	1	1	2		1	1						
Certificate		1	1		1	1	1	1	2				1	1	2
<b>TOTAL</b>	<b>49</b>	<b>115</b>	<b>164</b>	<b>56</b>	<b>78</b>	<b>134</b>	<b>58</b>	<b>93</b>	<b>151</b>	<b>51</b>	<b>98</b>	<b>149</b>	<b>54</b>	<b>103</b>	<b>157</b>
<b>SOCIAL WORK</b>															
Doctorate	4	27	31	4	28	32	4	27	31	3	23	26	2	21	23
Master's	53	275	328	37	197	234	22	169	191	16	100	116	23	114	137
<b>TOTAL</b>	<b>57</b>	<b>302</b>	<b>359</b>	<b>41</b>	<b>225</b>	<b>266</b>	<b>26</b>	<b>196</b>	<b>222</b>	<b>19</b>	<b>123</b>	<b>142</b>	<b>25</b>	<b>135</b>	<b>160</b>
<b>SCHOOL UNDECIDED / NON DEGREE SEEKING</b>															
Doctorate											1	1			
Master's										1		1			
<b>TOTAL</b>										<b>1</b>	<b>1</b>	<b>2</b>			

SOURCE: Banner by Ellucian/Student Database



**GRADUATE ENROLLMENT BY SCHOOL AND GENDER**  
**FALL 2015 – 2019**

SCHOOL	2015				2016				2017				2018				2019			
	M	W	TTL	%	M	W	TTL	%	M	W	TTL	%	M	W	TTL	%	M	W	TTL	%
Arts and Sciences	139	170	309	34%	140	180	320	40%	115	180	295	43%	97	158	255	44%	91	139	230	38%
Business Administration	40	48	88	10%	25	46	71	9%	20	29	49	7%	17	21	38	6%	25	30	55	9%
Education	49	115	164	18%	56	78	134	17%	58	93	151	22%	51	98	149	25%	54	103	157	26%
Social Work	57	302	359	39%	41	225	266	34%	26	169	195	28%	19	123	142	24%	25	135	160	27%
Undecided				0%				0%				0%	1	1	2	0%				0%
<b>GRAND TOTAL</b>	<b>285</b>	<b>635</b>	<b>920</b>	<b>100%</b>	<b>262</b>	<b>529</b>	<b>791</b>	<b>100%</b>	<b>219</b>	<b>471</b>	<b>690</b>	<b>100%</b>	<b>185</b>	<b>401</b>	<b>586</b>	<b>100%</b>	<b>195</b>	<b>407</b>	<b>602</b>	<b>100%</b>
<b>TOTAL PERCENT</b>	<b>31%</b>	<b>69%</b>	<b>100%</b>		<b>33%</b>	<b>67%</b>	<b>100%</b>		<b>32%</b>	<b>68%</b>	<b>100%</b>		<b>32%</b>	<b>68%</b>	<b>100%</b>		<b>32%</b>	<b>68%</b>	<b>100%</b>	

SOURCE: Banner by Ellucian/Student Database



## GRADUATE ENROLLMENT BY SCHOOL AND PROGRAM

**FALL 2015 – 2019**

SCHOOL/PROGRAM	2015	2016	2017	2018	2019
<b>ARTS &amp; SCIENCES</b>					
African American Studies	39	32	26	27	28
Africana Womens Studies	15	17	24	20	15
Biology	31	22	19	20	20
Chemistry	40	40	44	40	32
Computer Science*	41	37	19	13	16
Criminal Justice Administration	8	12	12	10	9
English	23	29	27	24	18
French					
History	7	4	7	4	8
Mathematics	9	10	11	6	5
Physics	9	19	14	6	3
Political Science	36	35	34	35	34
Public Administration	43	49	43	36	33
Romance Languages	3	3	4	4	4
Sociology	4	10	11	10	5
Spanish					
Systems Science†	1	1			
<b>TOTAL</b>	<b>309</b>	<b>320</b>	<b>295</b>	<b>255</b>	<b>230</b>
<b>BUSINESS ADMINISTRATION</b>					
Accounting	13	18	7	5	2
Business Administration (Concentrations: Entrepreneurship Mgmt., Finance, Marketing, Sports & Entertainment Mgmt., Supply Chain Mgmt.)	74	51	40	33	53
Economics	1	2	2		
<b>TOTAL</b>	<b>88</b>	<b>71</b>	<b>49</b>	<b>38</b>	<b>55</b>
<b>EDUCATION</b>					
Community Counseling**	23	12	21	26	23
Early Childhood Education‡	1	1	1		2
Educational Leadership	99	89	85	82	98
School Counseling	35	25	33	33	28
Secondary Education (Math or Science)	2	5	2	2	4
Special Ed - General Curriculum	4	2	9	6	2
<b>TOTAL</b>	<b>164</b>	<b>134</b>	<b>151</b>	<b>149</b>	<b>157</b>
<b>SOCIAL WORK</b>					
Social Work	328	234	164	116	137
SW Policy, Planning & Administration	31	32	31	26	23
<b>TOTAL</b>	<b>359</b>	<b>266</b>	<b>195</b>	<b>142</b>	<b>160</b>
<b>UNDECIDED</b>					
Major Not Declared					
Non Degree Seeking				2	
<b>TOTAL</b>				<b>2</b>	
<b>GRAND TOTAL</b>	<b>920</b>	<b>791</b>	<b>690</b>	<b>586</b>	<b>602</b>

\* Includes those students in old major name Computer Science Info

† Phased out 2005-2008

‡ Includes Post-bacc Certification





**GRADUATE ENROLLMENT BY ETHNICITY AND GENDER**  
**FALL 2015 – 2019**

ETHNICITY	2015				2016				2017				2018				2019			
	M	W	TTL	%	M	W	TTL	%	M	W	TTL	%	M	W	TTL	%	M	W	TTL	%
Non Resident Alien	58	60	118	13%	58	69	127	16%	67	91	158	23%	46	41	87	15%	23	25	48	8%
American Indian/Alaskan Native		2	2	0%				0%		1	1	0%		1	1	0%		1	1	0%
Asian or Pacific Islander	8	4	12	1%	6	3	9	1%	1	2	3	0%				0%				0%
Black or African American	177	490	667	73%	157	369	526	66%	138	330	468	68%	127	326	453	77%	157	363	520	86%
Hispanic	1	1	2	0%	1	3	4	1%		3	3	0%		2	2	0%	1	4	5	1%
White/Non-Hispanic	1	2	3	0%		3	3	0%	1	1	2	0%	1	1	2	0%	2	1	3	0%
Other/Unknown	40	76	116	13%	40	82	122	15%	12	43	55	8%	11	30	41	7%	12	13	25	4%
<b>GRAND TOTAL</b>	<b>285</b>	<b>635</b>	<b>920</b>	<b>100%</b>	<b>262</b>	<b>529</b>	<b>791</b>	<b>100%</b>	<b>219</b>	<b>471</b>	<b>690</b>	<b>100%</b>	<b>185</b>	<b>401</b>	<b>586</b>	<b>100%</b>	<b>195</b>	<b>407</b>	<b>602</b>	<b>100%</b>

SOURCE: Banner by Ellucian/Student Database



**GRADUATE STUDENT RELIGIOUS PREFERENCE BY GENDER**  
**FALL 2015 – 2019**

RELIGION/DENOMINATION	2015				2016				2017				2018				2019			
	M	W	TTL	%	M	W	TTL	%	M	W	TTL	%	M	W	TTL	%	M	W	TTL	%
African Methodist Episcopal	4	11	15	2%	4	11	15	2%	5	9	14	2%	1	7	8	1%	2	5	7	1%
Baptist	58	125	183	20%	41	86	127	16%	25	77	102	15%	20	74	94	14%	22	75	97	17%
Catholic	8	16	24	3%	5	11	16	2%	5	10	15	2%	5	6	11	2%	3	6	9	2%
Christian	58	200	258	28%	62	136	198	25%	55	125	180	26%	54	120	174	25%	65	112	177	30%
Christian Methodist Episcopal																				
Church of God	1	1	2	0%				0%	1		1	0%	1	1	2	0%				0%
Church of God in Christ		7	7	1%		7	7	1%		3	3	0%	1	1	2	0%		3	3	1%
Episcopal		2	2	0%		2	2	0%		1	1	0%	1	1	2	0%	1	1	2	0%
Evangelical																				
Holiness																				
Islamic	53	41	94	10%	54	58	112	14%	39	53	92	13%	25	23	48	7%	12	13	25	4%
Jehovah's Witness		1	1	0%		1	1	0%										1	1	
Lutheran										1	1	0%		1	1	0%				0%
Methodist									1	1	2	0%				0%	1	1	2	0%
Muslim													2		2	0%	1		1	0%
Non-Denomination									1		1	0%	1		1	0%	1		1	0%
Other	23	57	80	9%	18	44	62	8%	17	36	53	8%	9	29	38	6%	8	30	38	6%
Pentecostal	5	6	11	1%	2	5	7	1%	1	2	3	0%	1	1	2	0%	1	4	5	1%
Presbyterian		1	1			1	1			2	2	0%				0%				0%
Seventh Day Adventist	1	4	5	1%	1	2	3	0%		3	3	0%	1	3	4	1%	2	3	5	1%
United Methodist	2	8	10	1%	1	4	5	1%	3	2	5	1%	1	3	4	1%	1	2	3	1%
Unknown	72	155	227	25%	74	161	235	30%	66	146	212	31%	62	131	193	28%	75	151	226	39%
<b>GRAND TOTAL</b>	<b>285</b>	<b>635</b>	<b>920</b>	<b>100%</b>	<b>262</b>	<b>529</b>	<b>791</b>	<b>100%</b>	<b>219</b>	<b>471</b>	<b>690</b>	<b>100%</b>	<b>185</b>	<b>401</b>	<b>586</b>	<b>85%</b>	<b>195</b>	<b>407</b>	<b>602</b>	<b>103%</b>

SOURCE: Banner by Ellucian/Student Database



**GRADUATE ENROLLMENT BY RESIDENCY AND GENDER**

**FALL 2015– 2019**

TERM	2015				2016				2017				2018				2019			
	M	W	TTL	%	M	W	TTL	%	M	W	TTL	%	M	W	TTL	%	M	W	TTL	%
GEORGIA STATE	172	465	637	69%	161	349	510	64%	127	305	432	63%	113	286	399	68%	131	295	426	71%
OUT OF STATE & U.S. TERRITORIES	53	107	160	17%	41	105	146	18%	24	71	95	14%	26	72	98	17%	41	87	128	21%
UNKNOWN STATE	2	3	5	1%	2	6	8	1%	1	4	5	1%		2	2	0%				0%
INTERNATIONAL	58	60	118	13%	58	69	127	16%	67	91	158	23%	46	41	87	15%	23	25	48	8%
<b>GRAND TOTAL</b>	<b>285</b>	<b>635</b>	<b>920</b>	<b>100%</b>	<b>262</b>	<b>529</b>	<b>791</b>	<b>100%</b>	<b>219</b>	<b>471</b>	<b>690</b>	<b>100%</b>	<b>185</b>	<b>401</b>	<b>586</b>	<b>100%</b>	<b>195</b>	<b>407</b>	<b>602</b>	<b>100%</b>

SOURCE: Banner by Ellucian/Student Database



## GRADUATE ENROLLMENT BY STATE, U.S. TERRITORIES AND INTERNATIONAL

**FALL 2015 – 2019**

STATE, US TERRITORIES, INT	2015			2016			2017			2018			2019		
	M	W	TTL	M	W	TTL	M	W	TTL	M	W	TTL	M	W	TTL
ALABAMA	3	10	13	4	5	9	3	2	5	3	6	9	6	3	9
ALASKA														1	1
ARIZONA					1	1							2	11	13
ARKANSAS					1	1		1	1		1	1			
CALIFORNIA	7	4	11	4	8	12	1	8	9	3	9	12			
COLORADO	1		1		1	1					1				
CONNECTICUT	1	1	2					2	2	2		2	1	1	2
DELAWARE		1	1					1	1		1	1		2	2
DIST. OF COLUMBIA	1		1		1	1							1	1	2
FLORIDA	2	13	15	3	10	13	3	10	13	1	8	9	4	3	7
GEORGIA	172	465	637	161	349	510	127	305	432	113	286	399	131	295	426
ILLINOIS	2	6	8	1	7	8	3	4	7	4	2	6	4	5	9
INDIANA											1			2	2
IOWA					1	1									
KANSAS	1		1												
KENTUCKY	2	1	3					1	1	1	1	2	1		1
LOUISIANA	1	6	7		4	4		2	2		2	2			
MARYLAND		3	3	2	5	7	1	4	5	1	4	5	1	8	9
MASSACHUSETTS										1	1		1		
MICHIGAN	2	2	4	1	4	5	2	2	4		1	1	1	2	3
MINNESOTA											1				
MISSISSIPPI	1	1	2	1	3	4	1	4	5	1	4	5	2	2	4
MISSOURI	1		1	1		1				2	1		1	2	3
NEW JERSEY	2	4	6	1		1		1	1		2	2		1	1
NEW MEXICO														1	1
NEW YORK	3	7	10	4	10	14		6	6	2	4	6	1	5	6
NORTH CAROLINA	3	18	21	4	14	18	4	8	12	1	6	7	3	8	11
OHIO	3	3	6	3	6	9	1	2	3		2	2		1	1
OKLAHOMA	2	1	3	3	1	4	1	1	2		1	1			
PENNSYLVANIA	1	2	3	1	2	3				1			1	1	2
SOUTH CAROLINA	4	9	13	2	5	7		3	3		4	4	3	6	9
TENNESSEE	3	5	8	2	4	6		3	3	1	1	2	1	4	5
TEXAS	3	2	5	1	3	4	2	3	5	1	3	4	5	8	13
UTAH											1			1	1
VIRGINIA	1	3	4		5	5		4	4	1	4	5	2	4	6
WASHINGTON	2	3	5	3	1	4		1	1						
WEST VIRGINIA					3	3									
WISCONSIN	1	1	2												
UNKNOWN	2	3	5	2	6	8	1	4	5		2	2		4	4
<b>U.S. TERRITORIES</b>															
VIRGIN ISLANDS		1	1												
<b>INTERNATIONAL</b>	58	60	118	58	69	127	67	91	158	46	41	87	23	25	48
<b>GRAND TOTAL</b>	<b>285</b>	<b>635</b>	<b>920</b>	<b>262</b>	<b>529</b>	<b>791</b>	<b>219</b>	<b>471</b>	<b>690</b>	<b>185</b>	<b>401</b>	<b>586</b>	<b>195</b>	<b>407</b>	<b>602</b>

SOURCE: Banner by Ellucian/Student Database



**GRADUATE INTERNATIONAL STUDENT ENROLLMENT BY COUNTRY AND GENDER**  
**FALL 2015 – 2019**

COUNTRY	2015			2016			2017			2018			2019		
	M	W	TTL	M	W	TTL	M	W	TTL	M	W	TTL	M	W	TTL
Aguilla								1	1		1	1			
Bahamas										3	1	4	2	1	3
Bangladesh				1		1	1		1						
Cameroon														1	1
Canada	1		1	1		1									
China					1	1									
Curacao										1		1	1		1
Ghana										1		1	1		1
India		2	2	2	3	5	4	2	6		1	1			
Islamic Republic of Iran		1	1		1	1	1		1	1		1			
Jamaica					1	1									
Liberia				1	1	2	1	1	2	1	1	2	1	1	2
Libyan Arab Jamahiriya	1		1	2		2				2		2	1		1
Nepal										1		1	1		1
Nigeria							1	1	2	3		3	3	1	4
Saudi Arabia	8	12	20	46	59	105	57	85	142	33	34	67	13	20	33
Sri Lanka	1		1		1	1	1		1		1	1			
United Kingdom				1		1	1		1		1	1			
Yemen					1	1		1	1		1	1		1	1
Unknown	47	45	92	4	1	5									
<b>GRAND TOTAL</b>	<b>58</b>	<b>60</b>	<b>118</b>	<b>58</b>	<b>69</b>	<b>127</b>	<b>67</b>	<b>91</b>	<b>158</b>	<b>46</b>	<b>41</b>	<b>87</b>	<b>23</b>	<b>25</b>	<b>48</b>

SOURCE: Banner by Ellucian/Student Database



**STUDENT RETENTION,  
GRADUATION & PLACEMENT**



## UNDERGRADUATE STUDENT RETENTION AND GRADUATION REPORT

**FALL 2012 – 2019**

	2012=637		2013=781		2014=717		2015=844		2016=999		2017=914		2018=921		2019=814	
	#	%	#	%	#	%	#	%	#	%	#	%	#	%	#	%
<b>RETENTION</b>																
1 Total number of new freshmen full-time and part-time (first-time-in-college) *	637		781		717		844		999		914		921		814	
2 Average high school GPA	3.06		3.05		3.01		2.98		3.18		3.24		3.33		3.28	
3 Number of students from Line 1 returning for a 2nd year.	408	64%	469	60%	476	66%	561	66%	696	70%	636	70%	676	73%		
4 Number of students from Line 1 who returned for a 3rd year	328	51%	408	52%	403	56%	466	55%	550	55%	530	58%				
5 Number of students from Line 1 who returned for a 4th year	316	50%	374	48%	359	50%	412	49%	512	51%						
6 Number of students from Line 1 who returned for a 5th year	79	12%	109	14%	96	13%	139	16%								
7 Number of students from Line 1 who returned for a 6th year	22	3%	24	3%	19	3%										

### GRADUATION

8 Number of students from Line 1 who graduated in 4 years (or less)	211	33%	237	30%	197	27%	196	23%								
9 Number of students from Line 1 who graduated in 5 years or less (include those from line 7)	267	42%	303	39%	280	39%										
10 Number of students from Line 1 who graduated in 6 years or less (include those from Lines 7 & 8)	280	44%	341	44%												

SOURCE: Banner by Ellucian/Student Database

\*NOTE: Retention and graduation rates on this table are calculated for all full-time and part-time cohort which is different from IPEDS reports.



## UNDERGRADUATE FIRST GENERATION STUDENT RETENTION AND GRADUATION RATE

**FALL 2013 – 2019**

	2013 = 781		2014 = 717		2015 = 844		2016 = 999		2017 = 914		2018 = 921		2019 = 814	
	#	%	#	%	#	%	#	%	#	%	#	%	#	%
<b>RETENTION</b>														
1 Total number of new freshmen full-time and part-time (first-time-in-college)	221		239		285		324		328		283		258	
2 Average high school GPA	3.05		3.04		3.02		3.20		3.28		3.31		3.28	
3 Number of students from Line 1 returning for a 2nd year.	151	68%	156	65%	187	66%	231	71%	216	66%	201	71%		
4 Number of students from Line 1 who returned for a 3rd year	133	60%	131	55%	149	52%	176	54%	184	56%				
5 Number of students from Line 1 who returned for a 4th year	122	55%	115	48%	135	47%	170	52%						
6 Number of students from Line 1 who returned for a 5th year	38	17%	36	5%	43	15%								
7 Number of students from Line 1 who returned for a 6th year	10	5%	7	3%										

### GRADUATION

8 Number of students from Line 1 who graduated in 4 years (or less)	71	32%	55	23%										
9 Number of students from Line 1 who graduated in 5 years or less (include those from line 7)	99	45%	84	35%										
10 Number of students from Line 1 who graduated in 6 years or less (include those from Lines 7 & 8)	113	51%												

SOURCE: Banner by Ellucian/Student Database





**GRADUATION RATES OF STUDENTS RECEIVING ATHLETICALLY RELATED AID  
4-YR AVERAGE**

**FALL 2009 - 2012**

<b>Men's Sports</b>	<b>Grad Rate*</b>	<b>Women's Sports</b>	<b>Grad Rate*</b>
Baseball	33%	Basketball	72%
Football	41%	Softball	78%
Basketball	55%	CC Track	86%
CC Track	75%	Tennis	100%
		Volleyball	83%

\* Cohorts Graduated within 6 years

Source: NCAA Academic Success Rate Report



## GRADUATE MASTER'S TIME TO DEGREE

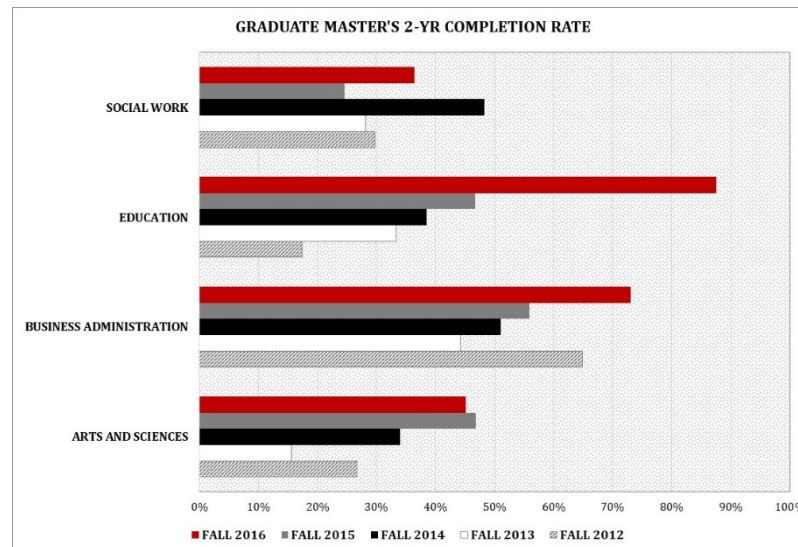
**FALL 2012 – 2016**

SCHOOL	TTL ENR	FALL 2012						TTL ENR	FALL 2013						TTL ENR	FALL 2014						TTL ENR	FALL 2015						TTL ENR	FALL 2016					
		YEARS COMPLETED							YEARS COMPLETED							YEARS COMPLETED							YEARS COMPLETED												
		1-2		3		4-5			1-2		3		4-5			1-2		3		4-5			1-2		3		4-5*			1-2		3		4-5*	
		#	%	#	%	#	%		#	%	#	%	#	%		#	%	#	%	#	%		#	%	#	%	#	%		#	%	#	%	#	%
ARTS AND SCIENCES	60	16	27%	9	15%	6	10%	58	9	16%	19	33%	9	16%	50	17	34%	19	38%	2	4%	47	22	47%	11	23%	1	2%	62	28	45%	13	21%		
BUSINESS ADMINISTRATION	37	24	65%	2	5%	1	3%	43	19	44%	8	19%	3	7%	47	24	51%	14	30%			34	19	56%	7	21%	3	9%	26	19	73%	4	15%		
EDUCATION	23	4	17%	6	26%	4	17%	33	11	33%	13	39%	3	9%	26	10	38%	9	35%	3	12%	30	14	47%	7	23%	3	10%	16	14	88%	1	6%		
SOCIAL WORK	118	35	30%	58	49%	10	8%	153	43	28%	63	41%	10	7%	114	55	48%	35	31%	2	2%	106	26	25%	51	48%	2	2%	88	32	36%	44	50%		
NON DEGREE SEEKING							2			1	50%																								
<b>GRAND TOTAL</b>	<b>238</b>	<b>79</b>	<b>33%</b>	<b>75</b>	<b>32%</b>	<b>21</b>	<b>9%</b>	<b>289</b>	<b>82</b>	<b>28%</b>	<b>104</b>	<b>36%</b>	<b>25</b>	<b>9%</b>	<b>237</b>	<b>106</b>	<b>45%</b>	<b>77</b>	<b>32%</b>	<b>7</b>	<b>3%</b>	<b>217</b>	<b>81</b>	<b>37%</b>	<b>76</b>	<b>35%</b>	<b>9</b>	<b>4%</b>	<b>192</b>	<b>93</b>	<b>48%</b>	<b>62</b>	<b>32%</b>		

SOURCE: Banner by Ellucian/Student Database

NOTE: "TTL ENR" column reflects the original headcount of students enrolled for the first time in the specified Fall term (ex. Fall 2009). Each Fall term (ex. Fall 2009) column shows the number of students from the original headcount that graduated from CAU within the displayed amount of years ("YEARS COMPLETED" 1-2, 3, 4-5).

\* Future Data





## GRADUATE DOCTORATE TIME TO DEGREE

**FALL 2010 – 2014**

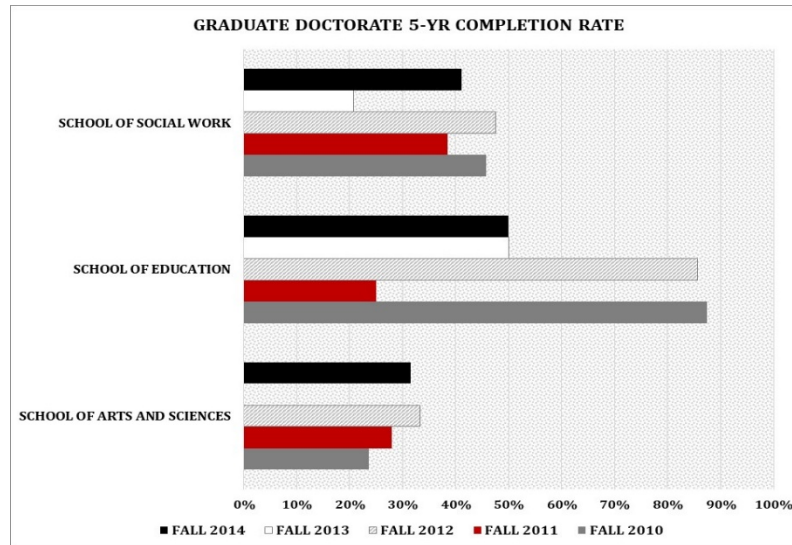
SCHOOL	TTL ENR	FALL 2010						TTL ENR	FALL 2011						TTL ENR	FALL 2012						TTL ENR	FALL 2013						TTL ENR	FALL 2014					
		YEARS COMPLETED							YEARS COMPLETED							YEARS COMPLETED							YEARS COMPLETED												
		1-3		4-5		6-7			1-3		4-5		6-7			1-3		4-5		6-7			1-3		4-5		6-7*			1-3		4-5		6-7*	
		#	%	#	%	#	%		#	%	#	%	#	%		#	%	#	%	#	%		#	%	#	%	#	%		#	%	#	%	#	%
SCHOOL OF ARTS AND SCIENCES	17	1	6%	3	18%	4	24%	25	3	12%	4	16%	3	12%	27	2	7%	7	26%	6	22%	15							19	1	5%	5	26%		
SCHOOL OF EDUCATION	8			7	88%			8	1	13%	1	13%	1	13%	7	1	14%	5	71%	1	14%	8	1	13%	3	38%	1	13%	10	1	10%	4	40%		
SCHOOL OF SOCIAL WORK	10			5	50%	2	20%	6			6	100%			6	1	17%	3	50%			6			2	33%			5			3	60%		
<b>GRAND TOTAL</b>	<b>35</b>	<b>1</b>	<b>3%</b>	<b>15</b>	<b>43%</b>	<b>6</b>	<b>17%</b>	<b>39</b>	<b>4</b>	<b>10%</b>	<b>11</b>	<b>28%</b>	<b>4</b>	<b>10%</b>	<b>40</b>	<b>4</b>	<b>10%</b>	<b>15</b>	<b>38%</b>	<b>7</b>	<b>18%</b>	<b>29</b>	<b>1</b>	<b>3%</b>	<b>5</b>	<b>17%</b>	<b>2</b>	<b>7%</b>	<b>34</b>	<b>2</b>	<b>6%</b>	<b>12</b>	<b>35%</b>		

† Phased Out 2005-2008

SOURCE: Banner by Ellucian/Student Database

NOTE: "TTL ENR" column reflects the original headcount of students enrolled for the first time in the specified Fall term (ex. Fall 2009). Each Fall term (ex. Fall 2009) column shows the number of students from the original headcount that graduated from CAU within the displayed amount of years ("YEARS COMPLETED" 1-2, 3, 4-5).

\* Future Data





## UNDERGRADUATE DEGREE RECIPIENTS BY SCHOOL, CIP CODE, MAJOR AND GENDER

**AY 2014-15 – 2018-19**

CIP	SCHOOL/MAJOR	2014-15			2015-16			2016-17			2017-18			2018-19		
		M	W	TTL	M	W	TTL	M	W	TTL	M	W	TTL	M	W	TTL
<b>ARTS &amp; SCIENCES</b>																
90799	Mass Media Arts	20	53	73	25	72	97	30	57	87	30	56	86	18	71	89
110101	Computer and Information Systems	5	3	8	10	4	14	1	1	2	7	1	8	10		10
110701	Computer Science	2	2	4	1	1	2	3	2	5	4	4	8	8	1	9
140101	Engineering †															
160901	French	1		1											1	1
160905	Spanish								1							
230101	English	1	9	10	2	5	7	1	8	9	1	2	3	1	6	7
231304	Speech Communication	2	9	11		2	2		3	3		2	2		2	2
260101	Biology	6	42	48	9	41	50	6	31	37	7	28	35	4	19	23
270101	Mathematics		2	2		2	2		5	5	3	2	5		2	2
380101	Philosophy					1	1		1	1	1		1			
380201	Religion				1	1	2		1	1	1		1	2		2
400501	Chemistry		2	2		2	2	1	5	6		4	4		4	4
400801	Physics	1	1	2	2	2	4			0		1	1	2		2
420101	Psychology	9	53	62	4	45	49	6	44	50	3	47	50	5	49	54
430104	Criminal Justice	11	42	53	15	26	41	4	31	35	4	29	33	14	41	55
451001	Political Science	3	12	15	3	10	13	3	8	11	2	8	10	1	10	11
451101	Sociology	1	4	5	1	1	2	2	3	5	1	9	10	2	1	3
500407	Fashion Design and Merchandising		19	19	1	35	36	2	21	23	5	30	35	1	22	23
500505	Theatre Arts	1	7	8	2	7	9		1	1	2	3	5	1	7	8
500701	Art		3	3	2	3	5	2	4	6	2	3	5	2	1	3
500901	Music	1	3	4	3	3	6	1	1	2	1		1	2	1	3
540101	History	1	2	3		3	3		1	1				1	2	3
<b>SCHOOL TOTAL</b>		<b>65</b>	<b>268</b>	<b>333</b>	<b>81</b>	<b>266</b>	<b>347</b>	<b>62</b>	<b>229</b>	<b>290</b>	<b>74</b>	<b>229</b>	<b>303</b>	<b>74</b>	<b>240</b>	<b>314</b>
<b>BUSINESS ADMINISTRATION</b>																
520201	Business Administration	14	43	57	20	54	74	29	57	86	27	40	67	47	64	111
520301	Accounting	5	14	19	1	13	14	4	14	18	3	3	6	5	9	14
520601	Economics	1	1	2		1	1		2	2		1	1	1		1
<b>SCHOOL TOTAL</b>		<b>20</b>	<b>58</b>	<b>78</b>	<b>21</b>	<b>68</b>	<b>89</b>	<b>33</b>	<b>73</b>	<b>106</b>	<b>30</b>	<b>44</b>	<b>74</b>	<b>53</b>	<b>73</b>	<b>126</b>
<b>EDUCATION</b>																
130101	Educational Studies	2	14	16	1	2	3		5	5	3	12	15	4	9	13
131210	Early Childhood Education		3	3	1	13	14		2	2		7	7		4	4
<b>SCHOOL TOTAL</b>		<b>2</b>	<b>17</b>	<b>19</b>	<b>2</b>	<b>15</b>	<b>17</b>		<b>7</b>	<b>7</b>	<b>3</b>	<b>19</b>	<b>22</b>	<b>4</b>	<b>13</b>	<b>17</b>
<b>SOCIAL WORK</b>																
440701	Social Work	2	16	18	2	19	21	3	22	25	1	17	18	6	20	26
<b>SCHOOL TOTAL</b>		<b>2</b>	<b>16</b>	<b>18</b>	<b>2</b>	<b>19</b>	<b>21</b>	<b>3</b>	<b>22</b>	<b>25</b>	<b>1</b>	<b>17</b>	<b>18</b>	<b>6</b>	<b>20</b>	<b>26</b>
<b>GRAND TOTAL</b>		<b>89</b>	<b>359</b>	<b>448</b>	<b>106</b>	<b>368</b>	<b>474</b>	<b>98</b>	<b>331</b>	<b>429</b>	<b>108</b>	<b>309</b>	<b>417</b>	<b>137</b>	<b>346</b>	<b>483</b>

† Phased Out 2005-2008

SOURCE: Banner by Ellucian/Student Database



**ACCELERATED BACHELOR/MASTER DUAL DEGREE RECIPIENTS  
BY SCHOOL, CIP CODE, MAJOR AND GENDER**

**AY 2014-15 – 2018-19**

CIP	SCHOOL/MAJOR	2014-15			2015-16			2016-17			2017-18			2018-19		
		M	W	TTL	M	W	TTL	M	W	TTL	M	W	TTL	M	W	TTL
<b><u>SCHOOL OF ARTS &amp; SCIENCES</u></b>																
110701	Computer Science															
260101	Biology															
270101	Mathematics				1	1		1	1							
400501	Chemistry															
400801	Physics															
<b>SCHOOL TOTAL</b>					1	1		1	1							
<b><u>SCHOOL OF BUSINESS ADMINISTRATION</u></b>																
520301	Accounting	1		1							1		1			
<b>SCHOOL TOTAL</b>		1		1							1		1			
<b>GRAND TOTAL</b>		1		1		1	1		1	1	1		1			

SOURCE: Banner by Ellucian/Student Database

**SPECIALIST DEGREE RECIPIENTS BY SCHOOL, CIP CODE, MAJOR AND GENDER**

**AY 2014-15 – 2018-19**

CIP	SCHOOL/MAJOR	2014-15			2015-16			2016-17			2017-18			2018-19		
		M	W	TTL	M	W	TTL	M	W	TTL	M	W	TTL	M	W	TTL
<b><u>SCHOOL OF EDUCATION</u></b>																
130401	Educational Leadership		1	1	2		2	1		1						
<b>SCHOOL TOTAL</b>			1	1	2		2									
<b>GRAND TOTAL</b>			1	1	2		2	1		1						

SOURCE: Banner by Ellucian/Student Database



## MASTER'S DEGREE RECIPIENTS BY SCHOOL, CIP CODE, MAJOR AND GENDER

**AY 2014-15 – 2018-19**

CIP	MAJOR	2014-15			2015-16			2016-17			2017-18			2018-19		
		M	W	TTL	M	W	TTL	M	W	TTL	M	W	TTL	M	W	TTL
<b><u>ARTS &amp; SCIENCES</u></b>																
50201	African American Studies	2	3	5	2	3	5	1		1	2	2	4	1		1
50299	Africana Women's Studies		3	3		1	1		1	1		1	1		1	1
110701	Computer Science	6	2	8	9	6	15	13	7	20	11	5	16	4		4
160901	French															
230101	English				1		1	2	4	6		1	1		2	2
260101	Biology				1	4	5		2	2	1		1	1	1	2
270101	Mathematics	3	1	4	2	1	3		4	4	2	6	8		3	3
400501	Chemistry		1	1	1	5	6		3	3	1	3	4	1	5	6
400801	Physics		1	1	3	2	5	7	3	10	4	7	11	3	1	4
430104	Criminal Justice Administration	1	4	5		2	2	3	2	5		6	6	1	4	5
440401	Public Administration	4	10	14	9	9	18	10	7	17	12	9	21	5	14	19
451001	Political Science					1	1				1	2	3			
451101	Sociology				1		1		3	3	3	3	6	3	4	7
540101	History					1	1		1	1					1	
160905	Spanish															
<b>SCHOOL TOTAL</b>		<b>16</b>	<b>25</b>	<b>41</b>	<b>29</b>	<b>35</b>	<b>64</b>	<b>36</b>	<b>37</b>	<b>73</b>	<b>37</b>	<b>45</b>	<b>82</b>	<b>19</b>	<b>36</b>	<b>54</b>
<b><u>BUSINESS ADMINISTRATION</u></b>																
520201	Business Administration	8	7	15	12	14	26	16	15	31	7	13	20	7	9	16
520301	Accounting	6	7	13	2	4	6	2	15	17	2	2	4	2	3	5
520601	Economics		1	1		2	2					2	2			
<b>SCHOOL TOTAL</b>		<b>14</b>	<b>15</b>	<b>29</b>	<b>14</b>	<b>20</b>	<b>34</b>	<b>18</b>	<b>30</b>	<b>48</b>	<b>9</b>	<b>17</b>	<b>26</b>	<b>9</b>	<b>12</b>	<b>21</b>
<b><u>EDUCATION</u></b>																
130401	Educational Leadership	2	4	6	2	6	8	7	9	16	7	11	18	3	6	9
131001	Special Ed - Gen Curriculum	1	5	6		2	2		1	1	3		3	2	2	4
131101	School Counseling		5	5	2	10	12	2	9	11	5	8	13	2	5	7
131205	Secondary Education (Science or Math)										4		4	1	1	2
139999	Community Counseling		6	6	2	12	14	1	4	5	2	7	9	1	6	7
<b>SCHOOL TOTAL</b>		<b>3</b>	<b>20</b>	<b>23</b>	<b>6</b>	<b>30</b>	<b>36</b>	<b>10</b>	<b>23</b>	<b>33</b>	<b>21</b>	<b>26</b>	<b>47</b>	<b>9</b>	<b>20</b>	<b>29</b>
<b><u>SOCIAL WORK</u></b>																
440701	Social Work	11	119	130	20	128	148	18	71	89	11	69	80	8	58	66
<b>SCHOOL TOTAL</b>		<b>11</b>	<b>119</b>	<b>130</b>	<b>20</b>	<b>128</b>	<b>148</b>	<b>18</b>	<b>71</b>	<b>89</b>	<b>11</b>	<b>69</b>	<b>80</b>	<b>8</b>	<b>58</b>	<b>66</b>
<b>GRAND TOTAL</b>		<b>44</b>	<b>179</b>	<b>223</b>	<b>69</b>	<b>213</b>	<b>282</b>	<b>82</b>	<b>161</b>	<b>243</b>	<b>78</b>	<b>157</b>	<b>235</b>	<b>45</b>	<b>126</b>	<b>171</b>

SOURCE: Banner by Ellucian/Student Database



**DOCTORAL DEGREE RECIPIENTS BY SCHOOL, CIP CODE, MAJOR AND GENDER**

**AY 2014-15 – 2018-19**

CIP	SCHOOL/MAJOR/CONCENTRATION	2014-15			2015-16			2016-17			2017-18			2018-19		
		M	W	TTL	M	W	TTL	M	W	TTL	M	W	TTL	M	W	TTL
<b>SCHOOL OF ARTS &amp; SCIENCES</b>																
50201	African-American Studies	1		1							1	2	3	1	2	3
50299	Africana Women's Studies		1	1				1	1		1	1		1	1	
160900	Romance Languages															
230101	English						1		1						5	
260101	Biology		1	1	1	3	4	3	6	9	1	2	3	3	2	5
400501	Chemistry		1	1	3	2	5	2	2	4	1	2	3	3	1	4
451001	Political Science	1	2	3	1		1	2	2	4	2	1	3	1		1
540100	History					1	1									
<b>SCHOOL TOTAL</b>		<b>2</b>	<b>5</b>	<b>7</b>	<b>5</b>	<b>6</b>	<b>11</b>	<b>8</b>	<b>11</b>	<b>19</b>	<b>5</b>	<b>8</b>	<b>13</b>	<b>8</b>	<b>11</b>	<b>19</b>
<b>SCHOOL OF EDUCATION</b>																
130401	Educational Leadership	2	3	5	4	8	12	6	15	21	6	8	14	5	8	13
<b>SCHOOL TOTAL</b>		<b>2</b>	<b>3</b>	<b>5</b>	<b>4</b>	<b>8</b>	<b>12</b>	<b>6</b>	<b>15</b>	<b>21</b>	<b>6</b>	<b>8</b>	<b>14</b>	<b>5</b>	<b>8</b>	<b>13</b>
<b>SCHOOL OF SOCIAL WORK</b>																
440701	Social Work		9	9	1	4	5		3	3		3	3	1	4	5
<b>SCHOOL TOTAL</b>			<b>9</b>	<b>9</b>	<b>1</b>	<b>4</b>	<b>5</b>		<b>3</b>	<b>3</b>		<b>3</b>	<b>3</b>	<b>1</b>	<b>4</b>	<b>5</b>
<b>GRAND TOTAL</b>		<b>4</b>	<b>17</b>	<b>21</b>	<b>10</b>	<b>18</b>	<b>28</b>	<b>14</b>	<b>29</b>	<b>43</b>	<b>11</b>	<b>19</b>	<b>30</b>	<b>14</b>	<b>23</b>	<b>37</b>

† Phased Out 2005-2008

SOURCE: Banner by Ellucian/Student Database



## UNDERGRADUATE AND GRADUATE CAREER PLACEMENT

### OVERALL 2018 – 2019 GRADUATING CLASS

Classification	# graduates	# of survey responses	% of survey responses	% of non-survey responses	% employed	% school	% unemployed	% school/employed
Undergraduate	529	373	70.51%	29.49%	31.64%	15.28%	52.28%	<b>47.72%</b>
Graduate	226	119	52.65%	47.35%	36.13%	1.68%	62.18%	<b>37.82%</b>

*Note: percentage data is based on completed survey responses*

*Note: military service is included in employed*

SOURCE: Career and Professional Development





**FACULTY / STAFF**



## FULL-TIME INSTRUCTIONAL FACULTY BY SCHOOL, GENDER, ETHNICITY, RANK, TENURE AND TERMINAL DEGREE

**FALL 2019**

SCHOOL GENDER	ETHNICITY						RANK					TENURE	TERMINAL DEGREE
	TTL	AS	BL	HS	WH	OT	PROF	ASSOC	ASST	INST	LECT		
<b>ARTS &amp; SCIENCES</b>													
Men	72	10	46	2	12	2	27	34	4	3	3	56	66
Women	53	5	43	1	3	1	4	21	15	6	4	26	47
<b>TOTAL</b>	<b>125</b>	<b>15</b>	<b>89</b>	<b>3</b>	<b>15</b>	<b>3</b>	<b>31</b>	<b>55</b>	<b>19</b>	<b>9</b>	<b>7</b>	<b>82</b>	<b>113</b>
<b>%</b>		<b>12%</b>	<b>71%</b>	<b>2%</b>	<b>12%</b>	<b>2%</b>	<b>25%</b>	<b>44%</b>	<b>15%</b>	<b>7%</b>	<b>6%</b>	<b>66%</b>	<b>90%</b>
<b>BUSINESS ADMINISTRATION</b>													
Men	14	3	10		1		8	5		1		13	13
Women	11	1	10				1	7	2		1	7	9
<b>TOTAL</b>	<b>25</b>	<b>4</b>	<b>20</b>		<b>1</b>		<b>9</b>	<b>12</b>	<b>2</b>	<b>1</b>	<b>1</b>	<b>20</b>	<b>22</b>
<b>%</b>		<b>16%</b>	<b>80%</b>		<b>4%</b>		<b>36%</b>	<b>48%</b>	<b>8%</b>	<b>4%</b>	<b>4%</b>	<b>80%</b>	<b>88%</b>
<b>EDUCATION</b>													
Men	5	1	4				3		2			3	5
Women	10		10				3	3	2			4	10
<b>TOTAL</b>	<b>15</b>		<b>14</b>				<b>6</b>	<b>3</b>	<b>4</b>			<b>7</b>	<b>15</b>
<b>%</b>			<b>93%</b>				<b>40%</b>	<b>20%</b>	<b>27%</b>			<b>47%</b>	<b>100%</b>
<b>SOCIAL WORK</b>													
Men	7	1	6					5	1		1	5	7
Women	9		8		1			3	3		3	3	9
<b>TOTAL</b>	<b>16</b>	<b>1</b>	<b>14</b>		<b>1</b>			<b>8</b>	<b>4</b>		<b>4</b>	<b>8</b>	<b>16</b>
<b>%</b>		<b>6%</b>	<b>88%</b>		<b>6%</b>			<b>50%</b>	<b>25%</b>		<b>25%</b>	<b>50%</b>	<b>100%</b>
<b>GRAND TOTAL</b>													
Men	98	15	66	2	13	2	38	44	7	4	4	77	91
Women	83	6	71	1	4	1	8	34	22	6	8	40	75
<b>TTL</b>	<b>181</b>	<b>21</b>	<b>137</b>	<b>3</b>	<b>17</b>	<b>3</b>	<b>46</b>	<b>78</b>	<b>29</b>	<b>10</b>	<b>12</b>	<b>117</b>	<b>166</b>
<b>TTL %</b>		<b>12%</b>	<b>76%</b>	<b>2%</b>	<b>9%</b>	<b>2%</b>	<b>25%</b>	<b>43%</b>	<b>16%</b>	<b>6%</b>	<b>7%</b>	<b>65%</b>	<b>92%</b>

NOTE: AI = American Indian/Alaskan Native AS = Asian BL = Black/African American HS = Hispanic WH = White OT=Other

SOURCE: Banner by Ellucian/HR Database



**PART-TIME INSTRUCTIONAL FACULTY BY SCHOOL, GENDER,  
ETHNICITY AND TERMINAL DEGREE**

**FALL 2019**

<b>SCHOOL</b>	<b>ETHNICITY</b>						
<b>GENDER</b>	<b>TOTAL</b>	<b>AI</b>	<b>AS</b>	<b>BL</b>	<b>HI</b>	<b>WH</b>	<b>OTH</b>
<b><u>ARTS &amp; SCIENCES</u></b>							
Men	48	1	1	40	1	2	3
Women	48			46		2	
<b>TOTAL</b>	<b>96</b>	<b>1</b>	<b>1</b>	<b>86</b>	<b>2</b>	<b>4</b>	<b>3</b>
<b>%</b>		1%	1%	90%	2%	4%	3%
<b><u>BUSINESS ADMINISTRATION</u></b>							
Men	8			8			
Women	4			4			
<b>TOTAL</b>	<b>12</b>			<b>12</b>			
<b>%</b>				100%			
<b><u>EDUCATION</u></b>							
Men	3			3			
Women	6			5			1
<b>TOTAL</b>	<b>9</b>			<b>8</b>			<b>1</b>
<b>%</b>				89%			11%
<b><u>SOCIAL WORK</u></b>							
Men	2			2			
Women	5			5			
<b>TOTAL</b>	<b>7</b>			<b>7</b>			
<b>%</b>				100%			
<b><u>GRAND TOTAL</u></b>							
Men	61	1	1	53	1	2	3
Women	63			60		2	1
<b>TOTAL</b>	<b>124</b>	<b>1</b>	<b>1</b>	<b>113</b>	<b>1</b>	<b>4</b>	<b>4</b>
<b>%</b>		1%	1%	91%	1%	3%	3%

NOTE: AI = American Indian/Alaskan Native AS = Asian BL = Black/African American WH = White  
HI = Hispanic OTH=Other

SOURCE: Banner by Ellucian/HR Database



## FULL-TIME INSTRUCTIONAL FACULTY PROFILE

**FALL 2015 – 2019**

<b>CATEGORY</b>	<b>2015</b>		<b>2016</b>		<b>2017</b>		<b>2018</b>		<b>2019</b>	
<b><u>SCHOOL</u></b>										
Arts & Sciences	117	68%	119	68%	121	68%	125	69%	125	69%
Business Administration	27	16%	27	15%	27	15%	27	15%	25	14%
Education	15	9%	13	7%	13	7%	13	7%	15	8%
Social Work	14	8%	17	10%	18	10%	17	9%	16	9%
<b>TOTAL</b>	<b>173</b>	<b>100%</b>	<b>176</b>	<b>100%</b>	<b>179</b>	<b>100%</b>	<b>182</b>	<b>100%</b>	<b>181</b>	<b>100%</b>
<b><u>RANK</u></b>										
Professor	42	24%	43	24%	48	27%	48	26%	46	25%
Associate Professor	67	39%	65	37%	62	35%	62	34%	78	43%
Assistant Professor	46	27%	50	28%	46	26%	40	22%	29	16%
Instructor	10	6%	5	3%	5	3%	10	5%	10	6%
Lecturer	8	5%	13	7%	13	7%	13	7%	12	7%
No Rank					5	3%	9	5%	6	3%
<b>TOTAL</b>	<b>173</b>	<b>100%</b>	<b>176</b>	<b>100%</b>	<b>179</b>	<b>100%</b>	<b>182</b>	<b>100%</b>	<b>181</b>	<b>100%</b>
<b><u>DEGREE</u></b>										
Doctoral	144	83%	143	81%	145	81%	145	80%	160	88%
Master's	29	17%	33	19%	34	19%	37	20%	21	12%
<b>TOTAL</b>	<b>173</b>	<b>100%</b>	<b>176</b>	<b>100%</b>	<b>179</b>	<b>100%</b>	<b>182</b>	<b>100%</b>	<b>181</b>	<b>100%</b>
<b><u>TENURE</u></b>										
Tenure	125	72%	114	65%	105	59%	105	58%	117	65%
On-Track	23	13%	22	13%	46	26%	42	23%	34	19%
Non-Tenure Track	25	14%	40	23%	28	16%	35	19%	30	17%
<b>TOTAL</b>	<b>173</b>	<b>100%</b>	<b>176</b>	<b>100%</b>	<b>179</b>	<b>100%</b>	<b>182</b>	<b>100%</b>	<b>181</b>	<b>100%</b>
<b><u>GENDER</u></b>										
Men	101	58%	100	57%	98	55%	98	54%	98	54%
Women	72	42%	76	43%	81	45%	84	46%	83	46%
<b>TOTAL</b>	<b>173</b>	<b>100%</b>	<b>176</b>	<b>100%</b>	<b>179</b>	<b>100%</b>	<b>182</b>	<b>100%</b>	<b>181</b>	<b>100%</b>
<b><u>ETHNICITY</u></b>										
Nonresident Alien	8	5%	6	3%	6	3%	5	3%	3	2%
American Indian/Alaskan Native										
Asian or Pacific Islander	22	13%	21	12%	20	11%	20	11%	20	11%
Black or African American	121	70%	129	73%	132	74%	135	74%	135	75%
Hispanic	3	2%	3	2%	3	2%	2	1%	3	2%
White/Non-Hispanic	17	10%	15	9%	16	9%	18	10%	17	9%
Other/Unknown	2	1%	2	1%	2	1%	2	1%	3	2%
<b>TOTAL</b>	<b>173</b>	<b>100%</b>	<b>176</b>	<b>100%</b>	<b>179</b>	<b>100%</b>	<b>182</b>	<b>100%</b>	<b>181</b>	<b>100%</b>

SOURCE: Banner by Ellucian/Human Resources Database



**TOTAL NUMBER OF FACULTY BY SCHOOL, DIVISION, DEPARTMENT,  
EMPLOYMENT STATUS, GENDER AND ETHNICITY**

**FALL 2015 – 2019**

**SCHOOL OF ARTS & SCIENCES**

Division, Department, FT/PT, Gender/Race		2015				2016				2017				2018				2019			
		BL	WH	OTH	TTL	BL	WH	OTH	TTL	BL	WH	OTH	TTL	BL	WH	OTH	TTL	BL	WH	OTH	TTL
<b>Division of Communication Arts</b>																					
Mass Media Arts	M	5			5	3			3	3			3	5			5	6			6
	W	5		1	6	5		1	6	5		1	6	4		1	5	3		1	4
	TTL	10		1	11	8		1	9	8		1	9	9		1	10	9		1	10
	M	4			4	3			3	7			7	6		2	8	8		1	9
	W					1			1	4			4	4			4	3			3
	TTL	4			4	4			4	11			11	10		2	12	11		1	12
TOTAL	14		1	15	12		1	13	19		1	20	19		3	22	20		2	22	
Speech Communication and Theater Arts	M	2			2	3			3	2			2	2			2	2			2
	W			1	1			1	1	2		1	3	2		1	3	2		1	3
	TTL	2		1	3	3		1	4	4		1	5	4		1	5	4		1	5
	M	4			4	2			2	3			3	3			3	2			2
	W	3			3	4			4	2			2	1		1	5	5			5
	TTL	7			7	6			6	5			5	4		4	7	7			7
TOTAL	9		1	10	9		1	10	9		1	10	8		1	9	11		1	12	
<b>Division of Humanities</b>																					
African American & Africana Women's Studies *	M	1	1		2	1	1		2	1	2		3	1	2		3	1	2		3
	W	1			1	1			1	3	1		4	3	1		4	2	1		3
	TTL	2	1		3	2	1		3	4	3		7	4	3		7	3	3		6
	M	3			3	3			3	3	1		4	3	1		4	4	1		5
	W	4	1		5		1		1	3	1		4	5	1		6	5	1		6
	TTL	7	1		8	3	1		4	6	2		8	8	2		10	9	2		11
TOTAL	9	2		11	5	2		7	10	5		15	12	5		17	12	5		17	
History *	M		1		1		1		1												
	W	2	1		3	3	1		4												
	TTL	2	2		4	3	2		5												
	M		1		1		1		1												
	W	2			2		2		2												
	TTL	2	1		3	2	1		3												
TOTAL	4	3		7	5	3		8													
Art	M		1		1		1		1		1		1		1		1		1		1
	W	4		1	5	3		1	4	3		1	4	3		1	4	4		1	5
	TTL	4	1	1	6	3	1	1	5	3	1	1	5	3	1	1	5	4	1	1	6
	M						1		1												
	W	2			2	3	1		4	3	1		4	6	1		7	4	1		5
	TTL	2			2	3	2		5	3	1		4	6	1		7	4	1		5
TOTAL	6	1	1	8	6	3	1	10	6	2	1	9	9	2	1	12	8	2	1	11	
English	M	3	1		4	3	1		4	3	1		4	3	1		4	1	1		2
	W	3	1	1	5	4		1	5	4		1	5	5		5	5				5
	TTL	6	2	1	9	7	1	1	9	7	1	1	9	8	1		9	6	1		7
	M	4			4	3			3	4		1	5	4		1	5	3	1		5
	W	10			10	13	1		14	10	1		11	12	2		14	14			14
	TTL	14			14	16	1		17	14	1	1	16	16	2	1	19	17	1	1	19
TOTAL	20	2	1	23	23	2	1	26	21	2	2	25	24	3	1	28	23	2	1	26	
Foreign Languages	M	1		2	3	2		2	4	2		4	2	1	1	4	2			4	
	W	1		1	2	1		1	2	1		2	1		1	2	2			1	3
	TTL	2		3	5	3		3	6	3		6	3	1	2	6	4			3	7
	M		1		1																
	W	3		1	4				1												
	TTL	3	1	1	5	1			1												
TOTAL	5	1	4	10	4	0	3	7	3	3	6	3	3	1	2	6	4		3	7	
Music	M	5	1		6	5	1		6	5	1		6	5	1		6	6	1		7
	W	1	1		2		1		1	1	1		2	1	1		2				2
	TTL	6	2		8	5	2		7	6	2		8	6	2		8	6	1		7
	M	1			1	1			1				1	3			3	6			6
	W	2			2	4	1		5	4			4	3			3	3			3
	TTL	3			3	5	1		6	4	1		5	6			6	9			9
TOTAL	9	2		11	10	3		13	10	3		13	12	2		14	15	1		16	

NOTE: BL = Black/African American WH = White OTH = Other

\* African American Studies, Africana Women's Studies & History combined as one Department, Fall 2012

SOURCE: Banner by Ellucian/HR Database



**TOTAL NUMBER OF FACULTY BY SCHOOL, DIVISION, DEPARTMENT,  
EMPLOYMENT STATUS, GENDER AND ETHNICITY (CONT'D)**

**FALL 2015 – 2019**

**SCHOOL OF ARTS & SCIENCES**

Division, Department, FT/PT, Gender/Race		2015				2016				2017				2018				2019				
		BL	WH	OTH	TTL	BL	WH	OTH	TTL	BL	WH	OTH	TTL	BL	WH	OTH	TTL	BL	WH	OTH	TTL	
<b>Division of Humanities</b>																						
Religion & Philosophy	M	2	1	1	4	2	1	1	4	2	1	1	4	2	1	1	4	2	1	1	4	
	W																					
	<b>TTL</b>	<b>2</b>	<b>1</b>	<b>1</b>	<b>4</b>	<b>2</b>	<b>1</b>	<b>1</b>	<b>4</b>	<b>2</b>	<b>1</b>	<b>1</b>	<b>4</b>	<b>2</b>	<b>1</b>	<b>1</b>	<b>4</b>	<b>2</b>	<b>1</b>	<b>1</b>	<b>4</b>	
	M																					
	W	1			1	1			1	1			1	1			1	1			1	
	<b>TTL</b>	<b>1</b>			<b>1</b>	<b>1</b>			<b>1</b>	<b>1</b>			<b>1</b>	<b>1</b>			<b>1</b>	<b>1</b>			<b>1</b>	
<b>TOTAL</b>	<b>3</b>	<b>1</b>	<b>1</b>	<b>5</b>	<b>3</b>	<b>1</b>	<b>1</b>	<b>5</b>	<b>3</b>	<b>1</b>	<b>1</b>	<b>5</b>	<b>3</b>	<b>1</b>	<b>1</b>	<b>5</b>	<b>3</b>	<b>1</b>	<b>1</b>	<b>5</b>		
<b>Division of Natural Sciences and Mathematics</b>																						
Biology	M	4	2	2	8	5	2	1	8	5	2	1	8	4	2	1	7	4	2	3	9	
	W	5			5	5		1	6	6		1	7	6	1	1	8	6	1	1	8	
	<b>TTL</b>	<b>9</b>	<b>2</b>	<b>2</b>	<b>13</b>	<b>10</b>	<b>2</b>	<b>2</b>	<b>14</b>	<b>11</b>	<b>2</b>	<b>2</b>	<b>15</b>	<b>10</b>	<b>3</b>	<b>2</b>	<b>15</b>	<b>10</b>	<b>3</b>	<b>4</b>	<b>17</b>	
	M					3		4									3	3			2	2
	W		2	1	3	4	1		5	4	1		5	5			5	1			1	
	<b>TTL</b>		<b>2</b>	<b>1</b>	<b>3</b>	<b>7</b>	<b>1</b>	<b>4</b>	<b>12</b>	<b>4</b>	<b>1</b>		<b>5</b>	<b>5</b>			<b>3</b>	<b>8</b>	<b>1</b>		<b>2</b>	<b>3</b>
<b>TOTAL</b>	<b>9</b>	<b>4</b>	<b>3</b>	<b>16</b>	<b>17</b>	<b>3</b>	<b>6</b>	<b>26</b>	<b>15</b>	<b>3</b>	<b>2</b>	<b>20</b>	<b>15</b>	<b>3</b>	<b>5</b>	<b>23</b>	<b>11</b>	<b>3</b>	<b>6</b>	<b>20</b>		
Chemistry	M	5	1	3	9	6	1	3	10	6	1	3	10	5	1	3	9	5	1	3	9	
	W																					
	<b>TTL</b>	<b>5</b>	<b>1</b>	<b>3</b>	<b>9</b>	<b>6</b>	<b>1</b>	<b>3</b>	<b>10</b>	<b>6</b>	<b>1</b>	<b>3</b>	<b>10</b>	<b>5</b>	<b>1</b>	<b>3</b>	<b>9</b>	<b>5</b>	<b>1</b>	<b>3</b>	<b>9</b>	
	M	1	1		2																	
	W	1			1									1								
	<b>TTL</b>	<b>2</b>	<b>1</b>		<b>3</b>									<b>1</b>								
<b>TOTAL</b>	<b>7</b>	<b>2</b>	<b>3</b>	<b>12</b>	<b>6</b>	<b>1</b>	<b>3</b>	<b>10</b>	<b>6</b>	<b>1</b>	<b>3</b>	<b>10</b>	<b>6</b>	<b>1</b>	<b>3</b>	<b>10</b>	<b>6</b>	<b>2</b>	<b>3</b>	<b>11</b>		
Computer and Information Sciences	M	2	2	2	6	1	2	2	5	1	2	2	5	1	2	2	5	1	2	2	5	
	W	1			1	1			1	2			2	2			2	2			2	
	<b>TTL</b>	<b>3</b>	<b>2</b>	<b>2</b>	<b>7</b>	<b>2</b>	<b>2</b>	<b>2</b>	<b>6</b>	<b>3</b>	<b>2</b>	<b>2</b>	<b>7</b>	<b>3</b>	<b>2</b>	<b>2</b>	<b>7</b>	<b>3</b>	<b>2</b>	<b>2</b>	<b>7</b>	
	M					1			1	1			1	1			1	1			1	
	W			1	1					1			1									
	<b>TTL</b>			<b>1</b>	<b>1</b>				<b>1</b>	<b>2</b>			<b>2</b>	<b>1</b>			<b>1</b>	<b>1</b>			<b>1</b>	
<b>TOTAL</b>	<b>3</b>	<b>2</b>	<b>3</b>	<b>8</b>	<b>3</b>	<b>2</b>	<b>2</b>	<b>7</b>	<b>5</b>	<b>2</b>	<b>2</b>	<b>9</b>	<b>4</b>	<b>2</b>	<b>2</b>	<b>8</b>	<b>4</b>	<b>2</b>	<b>2</b>	<b>8</b>		
Mathematical Sciences	M	2		1	3	2		1	3	2		1	3	2		2	4	2		1	3	
	W	3		1	4	3		1	4	3		1	4	3		1	4	3		1	4	
	<b>TTL</b>	<b>5</b>		<b>2</b>	<b>7</b>	<b>5</b>		<b>2</b>	<b>7</b>	<b>5</b>		<b>2</b>	<b>7</b>	<b>5</b>		<b>3</b>	<b>8</b>	<b>5</b>		<b>2</b>	<b>7</b>	
	M	8			8	6			6	6	1		7	6		1	7	8			8	
	W	2			2	1			1	2			2	5			5	5			5	
	<b>TTL</b>	<b>10</b>			<b>10</b>	<b>7</b>			<b>7</b>	<b>8</b>	<b>1</b>		<b>9</b>	<b>11</b>		<b>1</b>	<b>12</b>	<b>13</b>			<b>13</b>	
<b>TOTAL</b>	<b>15</b>		<b>2</b>	<b>17</b>	<b>12</b>		<b>2</b>	<b>14</b>	<b>13</b>	<b>1</b>	<b>2</b>	<b>16</b>	<b>16</b>		<b>4</b>	<b>20</b>	<b>18</b>		<b>2</b>	<b>20</b>		
Physics	M	3	1	3	7	3		3	6	3		3	6	3		3	6	3		2	5	
	W																					
	<b>TTL</b>	<b>3</b>	<b>1</b>	<b>3</b>	<b>7</b>	<b>3</b>		<b>3</b>	<b>6</b>	<b>3</b>		<b>3</b>	<b>6</b>	<b>3</b>		<b>3</b>	<b>6</b>	<b>4</b>		<b>2</b>	<b>6</b>	
	M		2		2		1		1												1	1
	W																					
	<b>TTL</b>		<b>2</b>		<b>2</b>		<b>1</b>		<b>1</b>													<b>1</b>
<b>TOTAL</b>	<b>3</b>	<b>3</b>	<b>3</b>	<b>9</b>	<b>3</b>	<b>1</b>	<b>3</b>	<b>7</b>	<b>3</b>		<b>3</b>	<b>6</b>	<b>3</b>		<b>3</b>	<b>6</b>	<b>4</b>		<b>3</b>	<b>7</b>		

NOTE: BL = Black/African American WH = White OTH = Other

SOURCE: Banner by Ellucian/HR Database



**TOTAL NUMBER OF FACULTY BY SCHOOL, DIVISION, DEPARTMENT,  
EMPLOYMENT STATUS, GENDER AND ETHNICITY (CONT'D)**

**FALL 2015 – 2019**

**SCHOOL OF ARTS & SCIENCES**

Division, Department, FT/PT, Gender/Race		2015				2016				2017				2018				2019				
		BL	WH	OTH	TTL	BL	WH	OTH	TTL	BL	WH	OTH	TTL	BL	WH	OTH	TTL	BL	WH	OTH	TTL	
<b>Division of Social Sciences</b>																						
Political Science	FT	M	5			5	5			5	3			3	4			4	4			4
		W	1			1	1			1	2			2	2			2	2			2
		<b>TTL</b>	<b>6</b>			<b>6</b>	<b>6</b>			<b>6</b>	<b>5</b>			<b>5</b>	<b>6</b>			<b>6</b>	<b>6</b>			<b>6</b>
	PT	M	3			3	6			6	7			7	2			2	4			4
		W	1			1	1			1	2			2	2			2	1			1
		<b>TTL</b>	<b>4</b>			<b>4</b>	<b>7</b>			<b>7</b>	<b>9</b>			<b>9</b>	<b>4</b>			<b>4</b>	<b>5</b>			<b>5</b>
<b>TOTAL</b>	<b>10</b>			<b>10</b>	<b>13</b>			<b>13</b>	<b>14</b>			<b>14</b>	<b>10</b>			<b>10</b>	<b>11</b>			<b>11</b>		
Psychology	FT	M	1	1		2	2	1		3	3	1		4	3	1		4	3	1		4
		W	3		1	4	3		1	4	3		1	4	4		1	5	3		1	4
		<b>TTL</b>	<b>4</b>	<b>1</b>	<b>1</b>	<b>6</b>	<b>5</b>	<b>1</b>	<b>1</b>	<b>7</b>	<b>6</b>	<b>1</b>	<b>1</b>	<b>8</b>	<b>7</b>	<b>1</b>	<b>1</b>	<b>9</b>	<b>6</b>	<b>1</b>	<b>1</b>	<b>8</b>
	PT	M	1			1	1			1	1			1				1	1			2
		W	1			1				2	2			2	1			1	2			2
		<b>TTL</b>	<b>2</b>			<b>2</b>	<b>1</b>			<b>1</b>	<b>3</b>			<b>3</b>	<b>1</b>			<b>1</b>	<b>3</b>			<b>3</b>
<b>TOTAL</b>	<b>6</b>	<b>1</b>	<b>1</b>	<b>8</b>	<b>6</b>	<b>1</b>	<b>1</b>	<b>8</b>	<b>9</b>	<b>1</b>	<b>1</b>	<b>11</b>	<b>8</b>	<b>1</b>	<b>1</b>	<b>10</b>	<b>9</b>	<b>1</b>	<b>1</b>	<b>11</b>		
Public Administration	FT	M	2			2	2			2	2			2	2			2	3			3
		W	2			2	3			3	3			3	3			3	2			2
		<b>TTL</b>	<b>4</b>			<b>4</b>	<b>5</b>			<b>5</b>	<b>5</b>			<b>5</b>	<b>5</b>			<b>5</b>	<b>5</b>			<b>5</b>
	PT	M																				
		W																				
		<b>TTL</b>																				
<b>TOTAL</b>	<b>4</b>			<b>4</b>	<b>5</b>			<b>5</b>	<b>5</b>			<b>5</b>	<b>5</b>			<b>5</b>	<b>5</b>			<b>5</b>		
Sociology & Criminal Justice	FT	M	2			2	2			2	1			1	2			2	1			1
		W	3			3	4			4	4			4	4			4	5			5
		<b>TTL</b>	<b>5</b>			<b>5</b>	<b>6</b>			<b>6</b>	<b>5</b>			<b>5</b>	<b>6</b>			<b>6</b>	<b>6</b>			<b>6</b>
	PT	M	4			4	3			3	4		1	5	4	1	1	6	3		1	4
		W		1		1				1	1			1	1	1		1	2			2
		<b>TTL</b>	<b>4</b>	<b>1</b>		<b>5</b>	<b>3</b>			<b>3</b>	<b>5</b>	<b>1</b>	<b>1</b>	<b>6</b>	<b>4</b>	<b>2</b>	<b>1</b>	<b>7</b>	<b>5</b>		<b>1</b>	<b>6</b>
<b>TOTAL</b>	<b>9</b>	<b>1</b>		<b>10</b>	<b>9</b>			<b>9</b>	<b>10</b>	<b>1</b>	<b>1</b>	<b>11</b>	<b>10</b>	<b>2</b>	<b>1</b>	<b>13</b>	<b>11</b>		<b>1</b>	<b>12</b>		
<b>School of Arts &amp; Sciences Total</b>	FT	M	45	13	14	72	47	12	13	72	44	12	13	69	46	13	13	72	46	12	14	72
		W	35	3	7	45	37	2	8	47	42	2	8	52	43	3	7	53	43	3	7	53
		<b>TTL</b>	<b>80</b>	<b>16</b>	<b>21</b>	<b>117</b>	<b>84</b>	<b>14</b>	<b>21</b>	<b>119</b>	<b>86</b>	<b>14</b>	<b>21</b>	<b>121</b>	<b>89</b>	<b>16</b>	<b>20</b>	<b>125</b>	<b>89</b>	<b>15</b>	<b>21</b>	<b>125</b>
	PT	M	33	5		38	33	3	4	40	36	3	2	41	32	2	8	42	40	2	6	48
		W	32	4	3	39	36	5		41	39	4		43	46	5		51	46	2		48
		<b>TTL</b>	<b>65</b>	<b>9</b>	<b>3</b>	<b>77</b>	<b>69</b>	<b>8</b>	<b>4</b>	<b>81</b>	<b>75</b>	<b>7</b>	<b>2</b>	<b>84</b>	<b>78</b>	<b>7</b>	<b>8</b>	<b>93</b>	<b>86</b>	<b>4</b>	<b>6</b>	<b>96</b>
<b>TOTAL</b>	<b>145</b>	<b>25</b>	<b>24</b>	<b>194</b>	<b>153</b>	<b>22</b>	<b>25</b>	<b>200</b>	<b>161</b>	<b>21</b>	<b>23</b>	<b>205</b>	<b>167</b>	<b>23</b>	<b>28</b>	<b>218</b>	<b>175</b>	<b>19</b>	<b>27</b>	<b>221</b>		

NOTE: BL = Black/African American WH = White Oth = Other

SOURCE: Banner by Ellucian/HR Database



**TOTAL NUMBER OF FACULTY BY SCHOOL, DIVISION, DEPARTMENT,  
EMPLOYMENT STATUS, GENDER AND ETHNICITY (CONT'D)**

**FALL 2015 – 2019**

**SCHOOL OF BUSINESS ADMINISTRATION**

Division, Department, FT/PT, Gender/Race		2015				2016				2017				2018				2019			
		BL	WH	OTH	TTL	BL	WH	OTH	TTL	BL	WH	OTH	TTL	BL	WH	OTH	TTL	BL	WH	OTH	TTL
Accounting	M		1		1		1		1		1		1		1		1		1		1
	FT W	1		2	3	3		2	5	3		1	4	3		1	4	3		1	4
	TTL	1	1	2	4	3	1	2	6	3	1	1	5	3	1	1	5	3	1	1	5
	PT M																				
	PT W													1			1				
	TTL													1			1				
<b>TOTAL</b>		<b>1</b>	<b>1</b>	<b>2</b>	<b>4</b>	<b>3</b>	<b>1</b>	<b>2</b>	<b>6</b>	<b>3</b>	<b>1</b>	<b>1</b>	<b>5</b>	<b>4</b>	<b>1</b>	<b>1</b>	<b>6</b>	<b>3</b>	<b>1</b>	<b>1</b>	<b>5</b>
Business Administration - Finance	M	2			2	2			2	1			1	1			1	1			1
	FT W	1			1	2			2	2			2	2			2	2			2
	TTL	3			3	4			4	3			3	3			3	3			3
	PT M													1			1	2			2
	PT W									1			1	1			1	1			1
	TTL									1			1	2			2	3			3
<b>TOTAL</b>		<b>3</b>			<b>3</b>	<b>4</b>			<b>4</b>	<b>4</b>			<b>4</b>	<b>5</b>			<b>5</b>	<b>6</b>			<b>6</b>
Business Administration - Management	M	2			2	1			1	2			2	2			2	2			2
	FT W	3			3	3			3	3			3	4			4	5			5
	TTL	5			5	4			4	5			5	6			6	7			7
	PT M													4			4	3			3
	PT W	1			1	2			2	2			2					1			1
	TTL	1			1	2			2	2			2	4			4	4			4
<b>TOTAL</b>		<b>6</b>			<b>6</b>	<b>6</b>			<b>6</b>	<b>7</b>			<b>7</b>	<b>10</b>			<b>10</b>	<b>11</b>			<b>11</b>
Business Administration - Marketing	M	4			4	4			4	3			3	3			3	3			3
	FT W	2			2	1			1	2			2	1			1	1			1
	TTL	6			6	5			5	5			5	4			4	3			3
	PT M																	1			1
	PT W																	1			1
	TTL																	2			2
<b>TOTAL</b>		<b>6</b>			<b>6</b>	<b>5</b>			<b>5</b>	<b>5</b>			<b>5</b>	<b>4</b>			<b>4</b>	<b>3</b>			<b>5</b>
Business Administration - Decision Science / Supply Chain Mgmt	M	1		3	4	1		3	4	2		3	5	2		3	5	2		2	4
	FT W	2			2	1			1	1			1	1			1	1			0
	TTL	3		3	6	2		3	5	3		3	6	3		3	6	2		2	4
	PT M					1												1			1
	PT W																	1			1
	TTL					1												2			2
<b>TOTAL</b>		<b>3</b>		<b>3</b>	<b>6</b>	<b>3</b>		<b>3</b>	<b>5</b>	<b>3</b>		<b>3</b>	<b>6</b>	<b>3</b>		<b>3</b>	<b>6</b>	<b>4</b>		<b>2</b>	<b>6</b>
Economics	M	2		1	3	2		1	3	2		1	3	2		1	3	2		1	3
	FT W																				
	TTL	2		1	3	2		1	3	2		1	3	2		1	3	2		1	3
	PT M													1			1	1			1
	PT W																				
	TTL													1			1	1			1
<b>TOTAL</b>		<b>2</b>		<b>1</b>	<b>3</b>	<b>2</b>		<b>1</b>	<b>3</b>	<b>2</b>		<b>1</b>	<b>3</b>	<b>3</b>		<b>1</b>	<b>4</b>	<b>3</b>		<b>1</b>	<b>4</b>
School of Business Administration Total	M	11	1	4	16	10	1	4	15	10	1	4	15	10	1	4	15	10	1	3	14
	FT W	9		2	11	10		2	12	11		1	12	11		1	12	10		1	11
	TTL	20	1	6	27	20	1	6	27	21	1	5	27	21	1	5	27	20	1	4	25
	PT M					1			1					6			6	8			8
	PT W	1			1	2			2	3			3	2			2	4			4
	TTL	1			1	3			3	3			3	8			8	12			12
<b>TOTAL</b>		<b>21</b>	<b>1</b>	<b>6</b>	<b>28</b>	<b>23</b>	<b>1</b>	<b>6</b>	<b>30</b>	<b>24</b>	<b>1</b>	<b>5</b>	<b>30</b>	<b>29</b>	<b>1</b>	<b>5</b>	<b>35</b>	<b>32</b>	<b>1</b>	<b>4</b>	<b>37</b>

NOTE: BL = Black/African American WH = White Oth = Other

SOURCE: Banner by Ellucian/HR Database





**TOTAL NUMBER OF FACULTY BY SCHOOL, DIVISION, DEPARTMENT,  
EMPLOYMENT STATUS, GENDER AND ETHNICITY (CONT'D)**

**FALL 2015 – 2019**

**SCHOOL OF EDUCATION**

Division, Department, FT/PT, Gender/Race		2015				2016				2017				2018				2019			
		BL	WH	OTH	TTL	BL	WH	OTH	TTL	BL	WH	OTH	TTL	BL	WH	OTH	TTL	BL	WH	OTH	TTL
Counselor Education	M	2			2	2			2	2			2	1			1	1			1
	W	2			2	2			2	2			2	3			3	3			3
	TTL	4			4	4			4	4			4	4			4	4			4
	M	2				1				1			1	1							
	W	3				1				2			2	3				3	2		
	TTL	5				2				3			3	4				4	2		
<b>TOTAL</b>	<b>9</b>			<b>9</b>	<b>6</b>			<b>6</b>	<b>7</b>			<b>7</b>	<b>8</b>			<b>8</b>	<b>6</b>			<b>6</b>	
Curriculum & Instruction **	M	2			2	1			1	1			1	1			1	1			1
	W	4			4	3			3	4			4	4			4	5			5
	TTL	6			6	4			4	5			5	5			5	6			6
	M	3				2				2			4	2	1			3	2		
	W	2				3				2			2	1				1	2		
	TTL	5				5	5			6			6	3	1			4	4		
<b>TOTAL</b>	<b>11</b>			<b>11</b>	<b>9</b>			<b>9</b>	<b>11</b>			<b>11</b>	<b>8</b>	<b>1</b>		<b>9</b>	<b>10</b>			<b>10</b>	
Educational Leadership	M	3			3	3			3	2			2	2			2	2			1
	W	2			2	2			2	1			2	2			2	2			2
	TTL	5			5	5			5	3			3	4			4	4			5
	M	1			1	1			1	2			2	1			1	1			1
	W	5			5	5			5	1			1				1	1			2
	TTL	6			6	6			6	3			3	1			1	2			3
<b>TOTAL</b>	<b>11</b>			<b>11</b>	<b>11</b>			<b>11</b>	<b>6</b>			<b>6</b>	<b>5</b>			<b>5</b>	<b>6</b>			<b>8</b>	
School of Education Total	M	7			7	6			6	5	1		6	4			4	4			1
	W	8			8	7			7	7			7	9			9	10			10
	TTL	15			15	13			13	12	1		13	13			13	14			15
	M	6			6	4			4	7			7	4	1		5	3			3
	W	10			10	9			9	5			5	4			4	5			6
	TTL	16			16	13			13	12			12	8	1		9	8			9
<b>TOTAL</b>	<b>31</b>			<b>31</b>	<b>26</b>			<b>26</b>	<b>24</b>	<b>1</b>		<b>25</b>	<b>21</b>	<b>2</b>		<b>22</b>	<b>22</b>			<b>24</b>	

**SCHOOL OF SOCIAL WORK**

Division, Department, FT/PT, Gender/Race		2015				2016				2017				2018				2019			
		BL	WH	OTH	TTL	BL	WH	OTH	TTL	BL	WH	OTH	TTL	BL	WH	OTH	TTL	BL	WH	OTH	TTL
Social Work	M	4		2	6	5		2	7	6		2	8	6		1	7	6		1	7
	W	6	1	1	8	9	1		10	9	1		10	9	1		10	8	1		9
	TTL	10	1	3	14	14	1	2	17	15	1	2	18	15	1	1	17	14	1	1	16
	M	5		2	7	1			1					1			1	2			2
	W	18			18	2			2	3			3	3			3	5			5
	TTL	23		2	25	3			3	3			3	4			4	7			7
<b>TOTAL</b>	<b>33</b>	<b>1</b>	<b>5</b>	<b>39</b>	<b>17</b>	<b>1</b>	<b>2</b>	<b>20</b>	<b>18</b>	<b>1</b>	<b>2</b>	<b>21</b>	<b>19</b>	<b>1</b>	<b>1</b>	<b>21</b>	<b>21</b>	<b>1</b>	<b>1</b>	<b>23</b>	

NOTE: BL = Black/African American WH = White OTH = Other

\*\* Curriculum Dept. renamed, Fall 2012

SOURCE: Banner by Ellucian/HR Database



**INSTRUCTIONAL FACULTY BY EMPLOYMENT STATUS, GENDER, AND RACE/ETHNICITY**

**FALL 2015 – 2019**

EMPLOYMENT STATUS RACE/ETHNICITY & GENDER	2015				2016				2017				2018				2019													
	FT		PT		FT		PT		FT		PT		FT		PT		FT		PT											
	M	W	M	W	TTL	%	M	W	M	W	TTL	%	M	W	M	W	TTL	%	M	W	M	W	TTL	%						
Nonresident Alien	7	1			8	3%	5	1	3		9	3%	5	1		1	7	2%	4	1	1		6	2%	2	1	1		4	1%
American Indian or Alaska Native						0%						0%						1	0%			1		1	0%		1		1	0%
Asian	15	7		2	24	8%	14	7	1		22	8%	14	6			20	7%	15	5	1		21	7%	15	5	1		21	7%
Black or African American	63	58	44	61	226	77%	66	63	39	49	217	79%	63	69	43	49	224	80%	63	72	43	55	233	79%	64	71	52	60	247	81%
Hispanic/Latino	2	1			3	1%	2	1			3	1%	2	1			3	1%	1	1	2		4	1%	2	1	1		4	1%
White	13	4	5	4	26	9%	12	3	3	5	23	8%	13	3	3	4	23	8%	14	4	3	5	26	9%	13	4	2	2	21	7%
Other/Unknown	1	1	2	1	5	2%	1	1			2	1%	1	1	2		4	1%	1	1	3		5	2%	2	1	3	1	7	2%
<b>TOTAL</b>	101	72	51	68	292	100%	100	76	46	54	276	100%	98	81	48	54	281	100%	98	84	54	60	296	100%	98	83	61	63	305	100%
<b>GRAND TOTAL</b>	<b>171</b>	<b>111</b>	<b>282</b>	<b>176</b>	<b>100</b>	<b>276</b>	<b>179</b>	<b>102</b>	<b>281</b>	<b>182</b>	<b>114</b>	<b>296</b>	<b>181</b>	<b>124</b>	<b>305</b>															
<b>%</b>	<b>61%</b>	<b>39%</b>	<b>100%</b>	<b>64%</b>	<b>36%</b>	<b>100%</b>	<b>64%</b>	<b>36%</b>	<b>100%</b>	<b>61%</b>	<b>39%</b>	<b>100%</b>	<b>59%</b>	<b>41%</b>	<b>100%</b>															

SOURCE: Banner by Ellucian/HR Database



**TOTAL EMPLOYEES BY EMPLOYMENT STATUS AND FTE\***  
**FALL 2015 – 2019**

INSTRUCTIONAL FACULTY STATUS	2015		2016		2017		2018		2019	
	#	%	#	%	#	%	#	%	#	%
Full-time	173	59%	176	64%	179	64%	182	61%	181	59%
Part-time	119	41%	100	36%	102	36%	114	39%	124	41%
<b>TOTAL</b>	292		276		281		296		305	
Full-time Equivalent (FTE)*	213		209		213		220		222	
<b>NON INSTRUCTIONAL STAFF STATUS</b>										
Full-time	356	91%	349	90%	345	93%	359	90%	378	91%
Part-time	35	9%	37	10%	27	7%	39	10%	37	9%
<b>TOTAL</b>	391		386		372		398		415	
Full-time Equivalent (FTE)*	374		368		359		379		397	

\*Faculty FTE = total part-time/3 + total full-time, Staff FTE = total part-time/2 + total full-time

SOURCE: Banner by Ellucian/HR Database



## FACULTY-STUDENT AND STAFF-STUDENT RATIO BY FULL-TIME EQUIVALENT (FTE)\*

FALL 2015 – 2019

<b>FACULTY/STUDENT RATIO</b>	<b>2015</b>	<b>2016</b>	<b>2017</b>	<b>2018</b>	<b>2019</b>
FTE Faculty	213	209	213	220	222
FTE Student	3489	3719	3821	3761	3779
<b>FTE Ratio</b>	<b>1:16</b>	<b>1:18</b>	<b>1:18</b>	<b>1:17</b>	<b>1:17</b>

<b>STAFF/STUDENT RATIO</b>	<b>2015</b>	<b>2016</b>	<b>2017</b>	<b>2018</b>	<b>2019</b>
FTE Staff	374	368	359	379	397
FTE Student	3489	3719	3821	3761	3779
<b>FTE Ratio</b>	<b>1:9</b>	<b>1:10</b>	<b>1:11</b>	<b>1:10</b>	<b>1:10</b>

\*Faculty FTE = total part-time/3 + total full-time, Staff FTE = total part-time/2 + total full-time

SOURCE: Banner by Ellucian/HR Database



# FINANCIALS



## UNDERGRADUATE AWARDED STUDENT AID

FALL 2019

Aid Type	Number of Awards	Percentage of Awards	Amount of Awards	Average Amount of Awards
Grant or Scholarship*	2752	83%	\$ 31,118,355	\$11,308
Pell Grants**	2265	68%	\$ 11,611,362	\$5,126
Federal Student Loans	2830	85%	\$ 19,755,465	\$6,981

\* Includes grants/scholarships aid from the federal government, state/local government, the institution, and other sources known to the institution

\*\* Pell Grants included in Grant or Scholarship

SOURCE: IPEDS Financial Aid Report



## REVENUES FY 2018-19

SOURCE	TTL AMT	%
Tuition & Fees	66,843,022	58%
Government Grants	16,865,694	15%
Private Gifts & Grants	8,270,423	7%
Investment Income	3,606,642	3%
Auxiliary Enterprises	16,146,423	14%
Net Realized & Unrealized gain/loss on investments	0	0%
Other Revenue	2,741,297	2%
Gain on extinguishment of debt		0%
<b>TOTAL REVENUES AND OTHER SUPPORT</b>	<b>114,473,501</b>	<b>100%</b>

SOURCE: IPEDS Finance Report

## EXPENDITURES FY 2018-19

EXPENSES	TTL AMT	%
Instruction	31,031,912	30%
Research	8,149,710	8%
Public Service	2,291,941	2%
Academic Support	9,809,900	9%
Student Services	10,680,860	10%
Student Aid		0%
Auxiliary Enterprises	16,004,990	15%
Institutional Support	25,637,522	25%
Operation and Plant Maintenance		
<b>TOTAL EDUCATION AND GENERAL</b>	<b>103,606,835</b>	<b>100%</b>
Interest & Financial Expense		
Gain/Loss on disposal of fixed assets		
<b>TOTAL EXPENSES</b>	<b>103,606,835</b>	<b>100%</b>

SOURCE: IPEDS Finance Report Auditors



**UNDERGRADUATE STUDENT COSTS PER ACADEMIC YEAR**

**AY 2015-16 – 2019-20**

<b>EXPENSE</b>	<b>2015-16</b>	<b>2016-17</b>	<b>2017-18</b>	<b>2018-19</b>	<b>2019-20</b>
Tuition & Fees	\$ 21,945	\$ 22,396	\$ 23,082	\$ 23,436	\$ 24,422
Room & Board	\$ 10,478	\$ 10,800	\$ 10,878	\$ 11,156	\$ 11,238
<b>TOTAL</b>	<b>\$ 32,423</b>	<b>\$ 33,196</b>	<b>\$ 33,960</b>	<b>\$ 34,592</b>	<b>\$ 35,660</b>

SOURCE: Office of Student Accounts

**UNDERGRADUATE ON-CAMPUS STUDENT COST OF ATTENDANCE PER ACADEMIC YEAR**

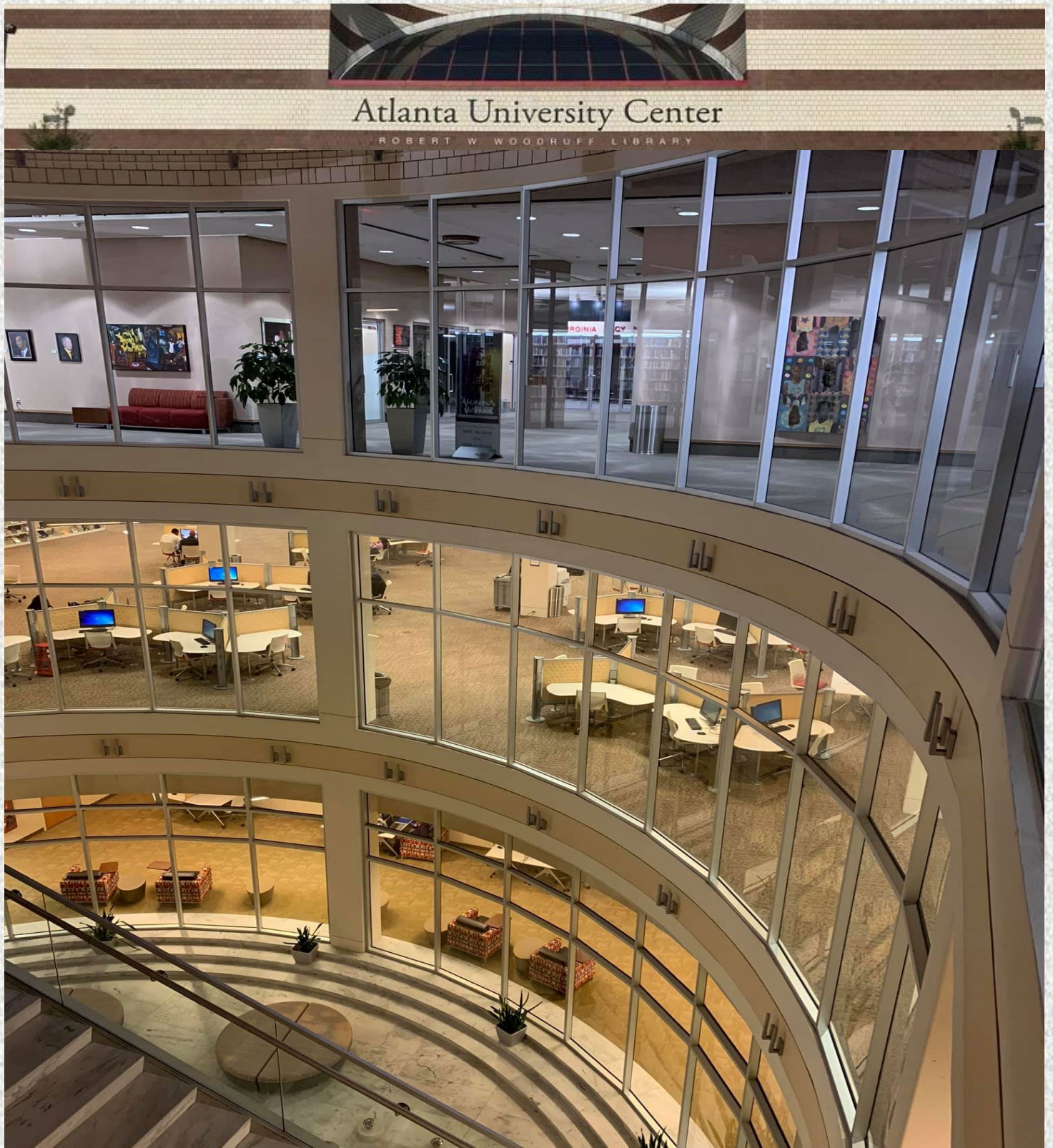
**AY 2015-16 – 2019-20**

<b>AVERAGE ON-CAMPUS STUDENT EXPENSE</b>	<b>2015-16</b>	<b>2016-17</b>	<b>2017-18</b>	<b>2018-19</b>	<b>2019-20</b>
Full-time Tuition (12-18 credit hours)	\$ 19,880	\$ 19,880	\$ 20,476	\$ 20,680	\$ 20,888
Required Fees*	\$ 2,065	\$ 2,516	\$ 2,606	\$ 2,756	\$ 3,534
Room (Double Occupancy)	\$ 5,396	\$ 5,396	\$ 5,400	\$ 5,508	\$ 5,618
Board (Maximum Charge)	\$ 3,678	\$ 3,860	\$ 3,938	\$ 4,016	\$ 4,098
Books & Supplies	\$ 1,500	\$ 1,500	\$ 1,500	\$ 1,500	\$ 1,500
Other Misc Expenses	\$ 3,065	\$ 3,065	\$ 3,112	\$ 3,312	\$ 3,312
<b>TOTAL</b>	<b>\$ 35,584</b>	<b>\$ 36,217</b>	<b>\$ 37,032</b>	<b>\$ 37,772</b>	<b>\$ 38,950</b>

\*Requested fees for AY 2017-18 includes \$1,190 Student Health Insurance Fees. NOTE: Undergraduate Students with the exception of International Students, Student Athletes, and campus Graduate Students may opt out of health insurance with proper proof of coverage.

SOURCE: Ellucian by Banner





# **LIBRARY LEARNING RESOURCES**



# Robert W. WOODRUFF LIBRARY

Atlanta University Center

Clark Atlanta University • Interdenominational Theological Center • Morehouse College • Spelman College

## Library Collection of Resources

AY 2015-16 – 2019-20

	Collection	2015-16	2016-17	2017-18	2018-19	2019-20
1	Bound Volumes	364,148	352,310	353,574	348,386	345,563
2	Bound Periodicals and Newspapers	6,590	4,218	4,218	4,211	4,211
3	Print Journal Subscriptions	1,015	987	937	929	929
4	Electronic Journal Subscriptions	2,989	2,989	2,997	3,001	3,006
5	Full-Text E-Journals Access Through Aggregator Databases	107,904	119,157	145,246	155,193	163,585
6	Microforms (Units)	841,341	841,341	841,341	841,341	841,341
7	Government Documents	104,047	114,620	12,227	120,486	120,544
8	Theses and Dissertations	17,884	17,933	17,963	18,015	18,037
9	Compact Discs	2,114	2,116	2,117	2,117	2,117
10	Databases	312	317	344	360	321
11	Cubic Feet of Archival Collections	8,000	8,005	8,214	8,356	8,517
12	E-Books	86,605	92,545	99,538	106,371	112,721
13	Audio Visual Material	6,257	6,309	6,360	6,379	6,393
a	Videos	3,965	3,965	3,965	3,965	3,965
b	DVD's	2,292	2,344	2,395	2,414	2,428

Building Established	1982
Seating Capacity	1200
Square Footage (total)	220,000 sq ft
Employees	88
Exhibition Hall Capacity	500
Group Study Rooms	14
Public Access Workstations	230 PCs and iMacs
Smart Classrooms & Learning Labs	8
Electronic Information Services/Resources, On-line Databases included in table above	

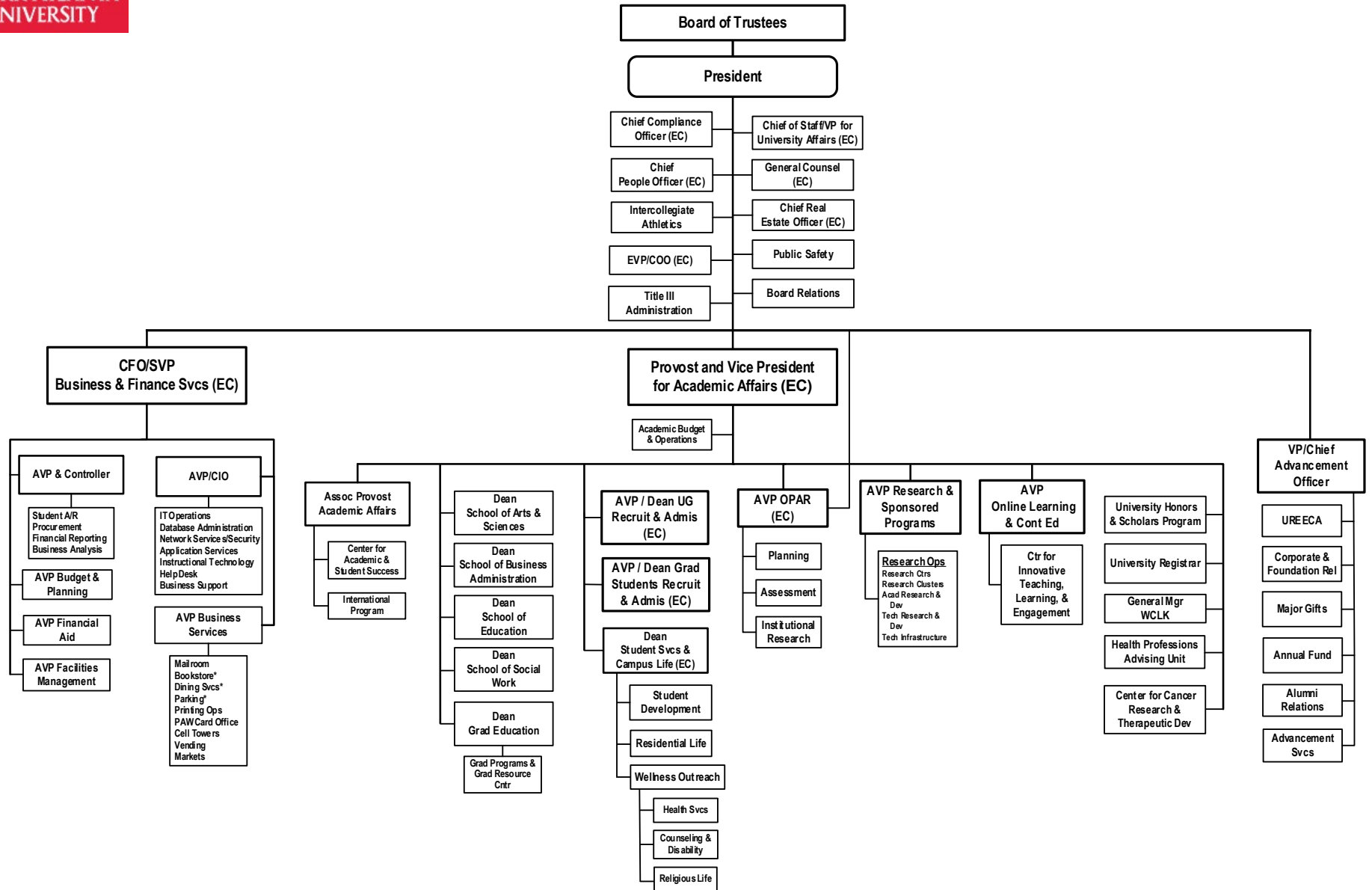
SOURCE: Robert W. Woodruff Library



# ADMINISTRATION



# 2019-2020 ORGANIZATIONAL STRUCTURE OF CLARK ATLANTA UNIVERSITY



**KEY**  
 EC= Executive Cabinet  
 \* = Contracted Services



## BOARD OF TRUSTEES

2018-2019

### CHAIR

Mr. Gregory B. Morrison

### SECRETARY

Dr. Delores P. Aldridge

### VICE-CHAIR

Mr. Leonard Walker

### TRUSTEES

Mr. Calvin Briggs  
Mr. Pedro Cherry  
Mr. James H. Colon  
Ms. Carla Cooper  
Mr. Salvador Diaz-Verson, Jr.  
Mr. Thomas W. Dortch, Jr.  
Mr. Ernest G. Green  
Ms. Sue Hauptert-Johnson  
Ms. Phinda Hillmon  
Mr. Richard L. Holmes  
R. William Ide, III, Esq.  
Mr. Tharon L. Johnson  
Ms. Ingrid Saunders Jones  
Mr. Joel Katz

Rev. Dr. Bernice Kirkland  
Mrs. Wendy Lewis  
Mr. Michael E. Melton  
Mr. Al B. Reid  
Mrs. Stephanie Russell  
Mrs. Bobby Kennedy Sanford  
Mr. William E. Shack, Jr.  
Mr. Isaac J. Snype, Jr.  
Errol B. Taylor, Esq.  
Dr. Alvin Trotter  
Ms. Brenda Walker  
Mr. Leonard Walker  
Mr. Derrick M. Williams  
Ms. Carolyn Young

### TRUSTEES EMERITUS

Juanita P. Baranco, J.D.  
Dr. Harold E. Doley, Jr.  
Eldridge W. McMillan, Ph.D.

Mrs. Lisa Borders  
Mr. Sidney Topol  
Mr. Carl Ware

### FACULTY DELEGATES

Henry Elongé  
Alice Stephens

### ALUMNI

Calvin Briggs  
Carla Cooper

### EX-OFFICIO

George T. French, Jr., J.D, Ph.D.  
President

### STUDENT DELEGATES

Levon Campbell, Undergraduate SGA President  
Frank Ortega, Graduate SGA President



## EXECUTIVE CABINET

**2018-2019**

George T. French Jr., Ph.D. *	President
Lucille H. Mauge **	Interim President
Dorcas D. Bowles, Ed.D.	Interim Provost and Vice President of Academic Affairs
Eli H. Phillips, Jr.	Executive Vice President, Chief Operating Officer
Lanze Thompson, Ph.D.	Chief Financial Officer and SVP, Business and Financial Services
Sam D. Burston	Chief Advancement Officer for Institutional Advancement
Omar Estrada Torres, Ed.D.	Dean, Student Services & Campus Life
Jennifer Ervin, Esq.	General Counsel
Debra Hoyt	Chief People Officer
Charles Gibbs, Ed.D.	Chief of Staff & VP for University Affairs
Marilynn Davis	Chief Real Estate Officer
Robert Clark, Jr.	Chief Compliance Officer
Lorri Saddler Rice	Associate Vice President and Dean of Undergraduate Admissions
Cherise Y. Peters	Associate Vice President and Dean for Graduate Admissions
Lauren V. Lopez, Ph.D.	Assistant Vice President, Planning, Assessment and Institutional Research/SACSCOC Institutional Accreditation Liaison

\* Appointed Fall 2019

\*\* Resigned, Fall 2019

## ACADEMIC SCHOOL DEANS

School of Arts and Sciences	Jaideep Chaudhary, Ph.D., Interim
School of Business Administration	Sylvanus Udoka, Ph.D.
School of Education	J. Fidel Turner, Ph.D.
Whitney M. Young, Jr. School of Social Work	Jenny Jones, Ph.D.
Student Services and Campus Life	Omar E. Torres, Ed.D.

SOURCE: Office of Human Resources



## DEGREE GRANTING DEPARTMENT CHAIRS

2018-2019

### SCHOOL OF ARTS AND SCIENCES

African American Studies, Africana Women's Studies and History	Dr. Eric Duke	Chairperson
Art	Prof. Christopher Hickey, <i>Interim</i>	Chairperson
Biological Sciences	Dr. Winifred Harris, <i>Interim</i>	Chairperson
Chemistry	Dr. Conrad Ingram, <i>Interim</i>	Chairperson
Computer & Information Sciences	Dr. Roy George	Chairperson
Doctor of Arts in Humanities	Dr. Rico Chapman	Director
Dual Degree Engineering Program*	Dr. Jaideep Chaudhary, <i>Interim</i>	Chairperson
English & Foreign Languages	Dr. Georgene Bess-Montgomery, <i>Interim</i>	Chairperson
Mass Media Arts	Prof. Gary Yates	Chairperson
Mathematical Sciences	Dr. Torina Lewis, <i>Interim</i>	Chairperson
Music	Dr. J. Robert Adams, <i>Interim</i>	Chairperson
Physics	Dr. Michael Williams, <i>Interim</i>	Chairperson
Political Science	Dr. Kurt Young, <i>Interim</i>	Chairperson
Psychology	Dr. Timothy Moore, <i>Interim</i>	Chairperson
Public Administration	Dr. Henry Elongé	Chairperson
Religion & Philosophy	Dr. Philip Dunston	Chairperson
Sociology & Criminal Justice	Dr. Barbara Combs, <i>Interim</i>	Chairperson
Speech Communication and Theater Arts	Dr. Eve Graves	Chairperson

### SCHOOL OF BUSINESS ADMINISTRATION

Decision Sciences and Economics	Dr. Paul Brown	Chairperson
Accounting and Finance	Dr. Crystal Hudson	Chairperson
Management and Marketing	Dr. Donald Vest	Chairperson

### SCHOOL OF EDUCATION

Counselor Education	Dr. Crystal Giddings	Chairperson
Curriculum & Instruction	Dr. Felicia Mayfield	Chairperson
Educational Leadership	Dr. Barbara Hill	Chairperson

### WHITNEY M. YOUNG, JR. SCHOOL OF SOCIAL WORK

Bachelor of Social Work	Dr. Shonda Lawrence	Chairperson
Master of Social Work	Dr. Joi Showell	Chairperson
Ph.D. in Social Work	Dr. Eytayo Onifade	Chairperson

\* 3 plus 2 Dual Degree Program with partner engineering institutions

SOURCE: Office of Academic Affairs



**CLARK ATLANTA UNIVERSITY**

*Office of Planning, Assessment and Institutional Research*

*223 James P. Brawley Dr., SW*

*Atlanta, GA 30314*

*404-880-8061*