

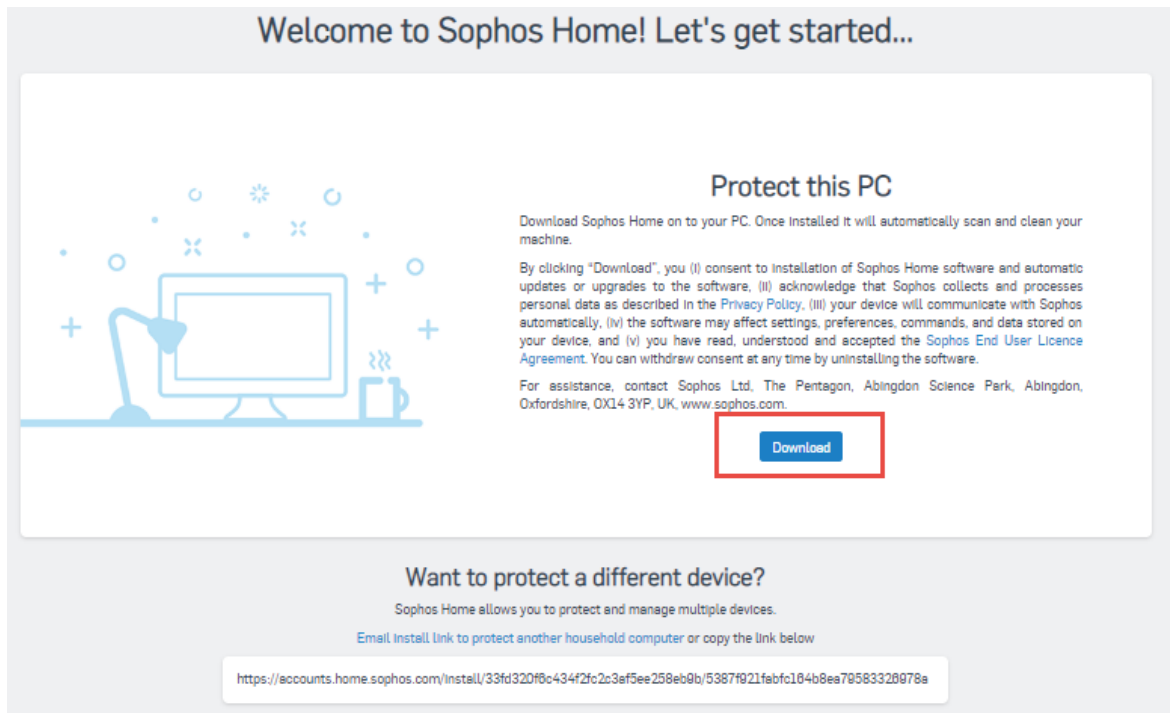
## Sophos Home - Windows Installation

Watch it here: <https://youtu.be/6vY8RwazBdo>

Or follow these steps:

### Step-by-step instructions

1. Sign in to your [Sophos Home](#) dashboard.
2. Click the blue **Download** button.



Welcome to Sophos Home! Let's get started...

**Protect this PC**

Download Sophos Home on to your PC. Once installed it will automatically scan and clean your machine.

By clicking "Download", you (i) consent to installation of Sophos Home software and automatic updates or upgrades to the software, (ii) acknowledge that Sophos collects and processes personal data as described in the [Privacy Policy](#), (iii) your device will communicate with Sophos automatically, (iv) the software may affect settings, preferences, commands, and data stored on your device, and (v) you have read, understood and accepted the [Sophos End User Licence Agreement](#). You can withdraw consent at any time by uninstalling the software.

For assistance, contact Sophos Ltd, The Pentagon, Abingdon Science Park, Abingdon, Oxfordshire, OX14 3YP, UK. [www.sophos.com](http://www.sophos.com).

**Download**

**Want to protect a different device?**

Sophos Home allows you to protect and manage multiple devices.

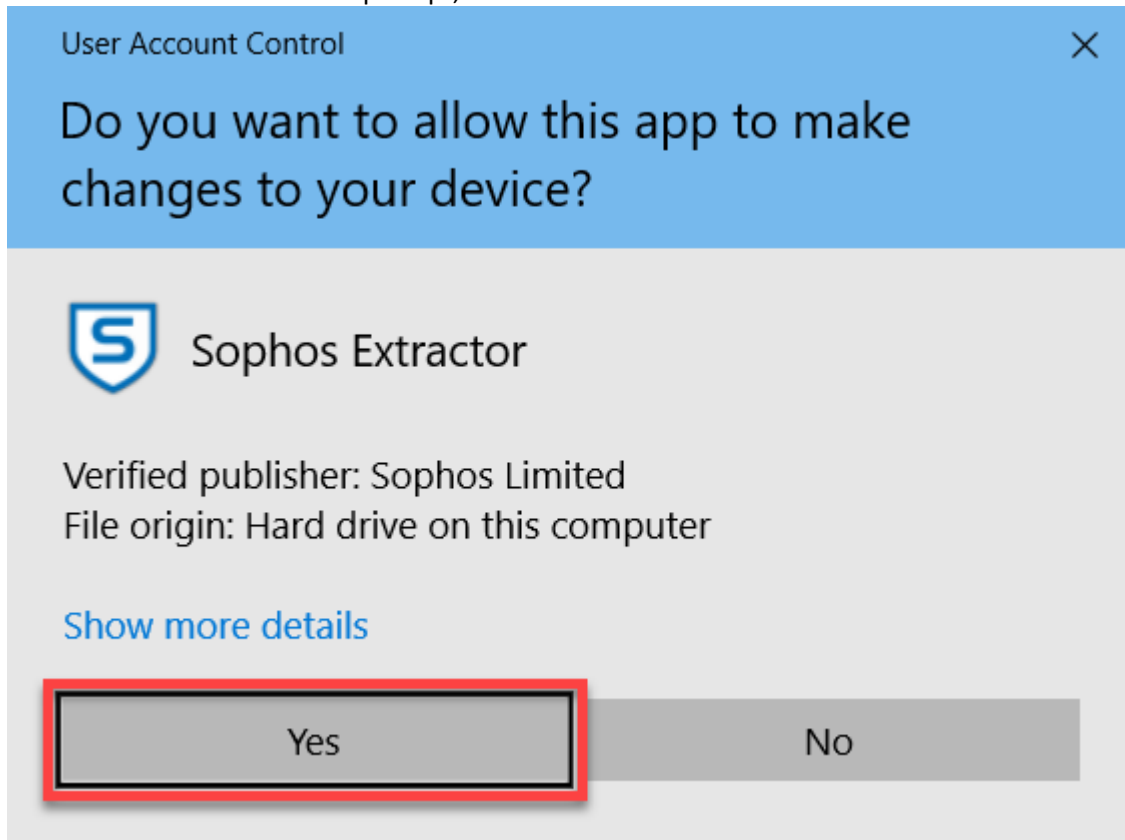
Email [install.link@accounts.home.sophos.com](mailto:install.link@accounts.home.sophos.com) to protect another household computer or copy the link below

<https://accounts.home.sophos.com/install/33fd320fbc434f2fc2c3ef5ee258eb9b/5387f921fabfc184b8ea79583328978a>

3. Wait until the installer file **SophosInstall.exe** is downloaded.
4. Double-click on the downloaded **SophosInstall.exe** file to run the installer.



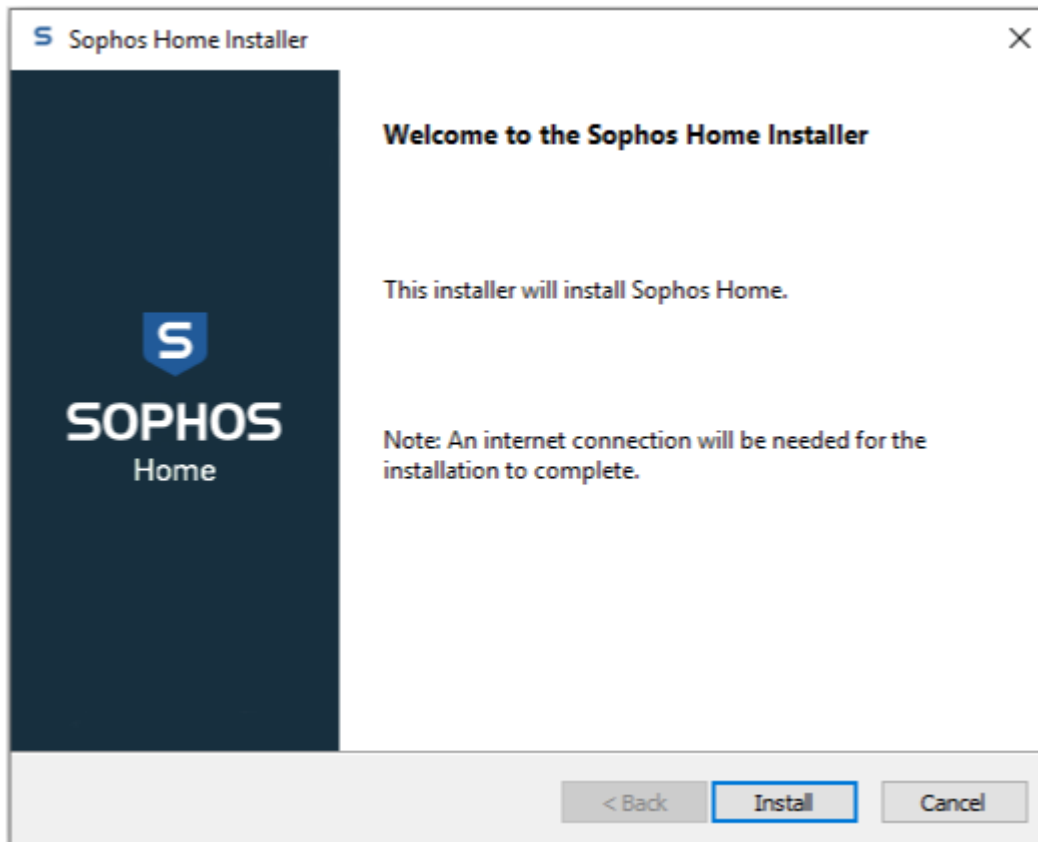
5. On the **User Account Control** prompt, click **Yes**.



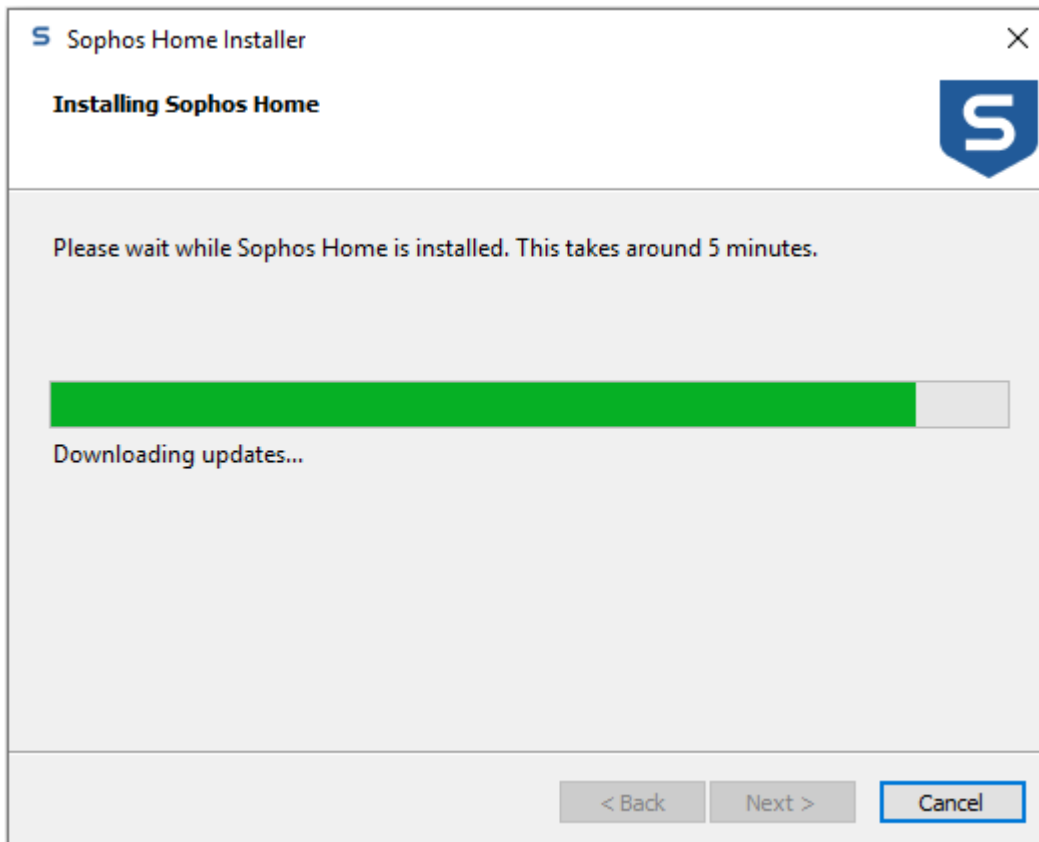
6. Wait for the extractor to finish.



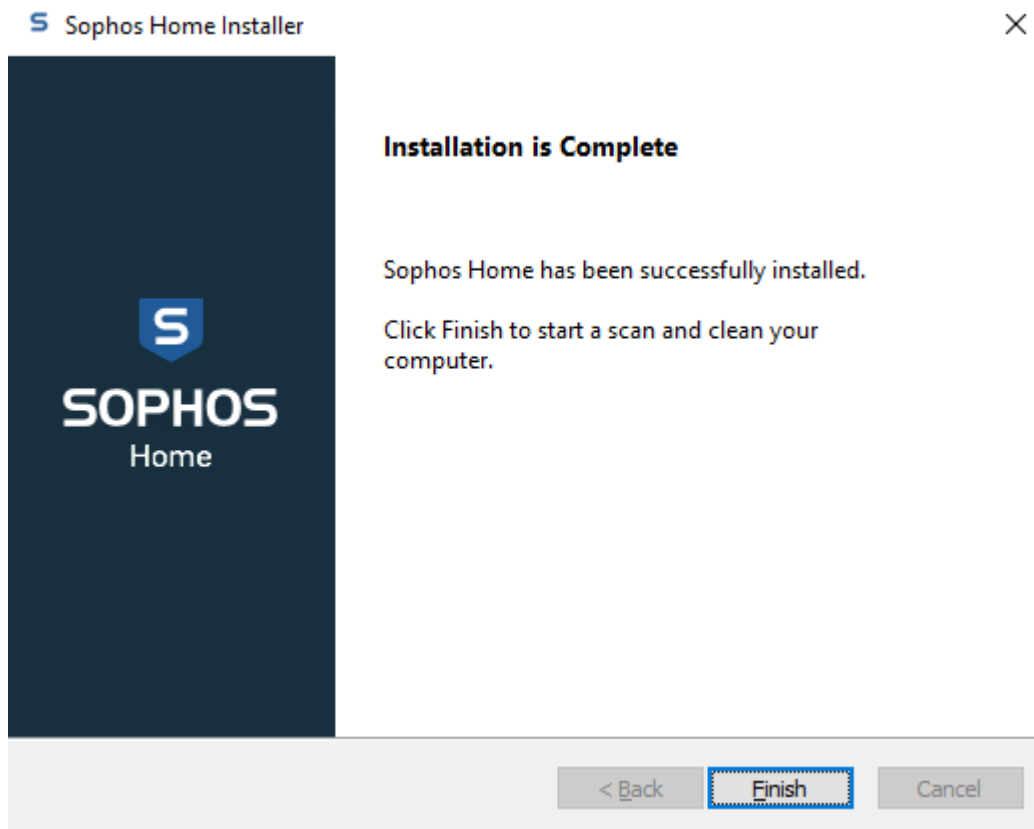
7. Click **Install**.



8. Wait for the installation to finish.



9. You will see the **Installation is complete** message once the installation is successful. Click **Finish** and the window will close.



10. For information regarding how to use and configure Sophos Home please visit our [Sophos Home - Getting started guide](#)